

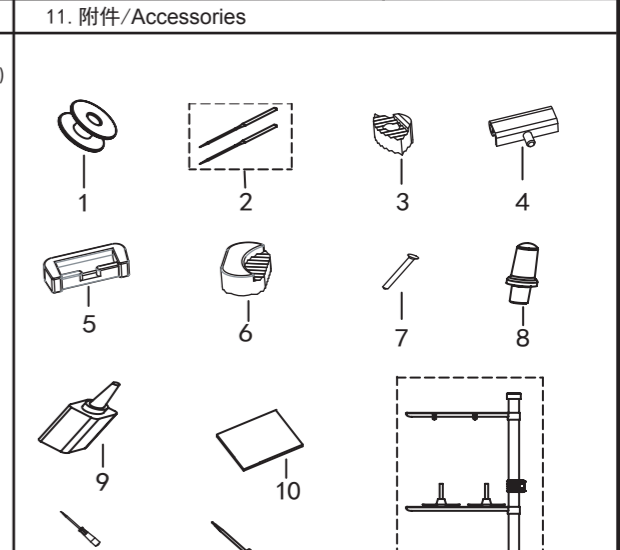
序号	图号	数量	名称	Name of parts
1	115031001	2	螺钉SM3.57	Screw SM3.57
2	101090701	1	油线固定板	Oil line fixing plate
3	101090601	1	油毡夹	Linoleum clip
4	101090301	1	油毡	Linoleum
5	5040202	1	尼龙油管3.2	Nylon tubing 3.2
6	101091801	1	上轴供油管	Upper shaft oil supply pipe
7	101091601	1	油泵连接螺钉	Oil pump connecting screw
8	115072601	1	螺钉SM4.37	Screw SM4.37
9	168061401	1	油泵组件	Oil pump components
10	101074701	1	螺钉SM5.95	Screw SM5.95
11	101091701	1	铝油管接头	Oil supply pipe joint
12	125092201	1	铝管接头	Aluminum pipe joint
13	5040202	1	尼龙油管3.2	Nylon tubing 3.2
14	5050951	1	磁铁	magnet
15	168062002	1	油盒盖	Oil box cover
16	062350616	7	螺钉M3.5x6	Screw M3.5x6
17	168061802	1	油盒密封圈	Oil box sealing ring
18	168062111	1	油盒	Oil box
19	180085401	1	浮球组件	Float assembly
20	028050246	6	弹簧垫片T5	Spring washer T5
21	025050132	6	垫圈5	Washer 5
22	018502032	6	螺钉M5x20	Screw M5x20
23	124123201	1	电线压板	Wire pressure plate
24	115080901	1	放油螺钉M8	Oil drain screw M8
25	168063001	1	O型圈13x2.4	O-ring 13x2.4
26	115080401	3	供油口	Oil supply port
27	168062601	1	供油口	Oil supply port
28	115085501	4	油管夹	Tubing clamp
29	5040202	1	尼龙油管 (进油)	Nylon tubing (oil inlet)
30	5040202	1	尼龙油管 (出油)	Nylon tubing (oil out)
31	115011001	1	橡皮塞10.5	Rubber stopper 10.5
32	115081501	1	调节螺钉	Adjusting screw
33	081004870	2	O型圈6.5x1.5	O-ring 6.5x1.5
34	169080101	1	油管支架	Tubing bracket
35	062500816	2	螺钉SM5x8	Screw SM5x8
36	101092201	1	油线	Oil line
37	125103901	1	磁铁安装螺钉	Magnet Mounting Screw
38	125101802	1	供油嘴	Fuel nozzle
39	028060246	1	弹簧垫片T6	Spring washer T6
40	101075101	1	平垫片6	Flat gasket 6

序号	图号	数量	名称	Name of parts
1	101010901	2	螺钉SM4.76	Screw SM4.76
2	115090301	1	穿线板	Threading board
3	168072901	1	绕线器密封圈	Winder assembly
4	101022501	1	底线绕线器	Winder gasket
5	101022601	3	螺钉M5x10	Screw M5x10
6	101022701	1	割线刀	Secant knife
7	101022801	2	螺钉SM3.57	Screw SM3.57
8	168072301	1	绕线器夹线组件	Winder wire clamping asm
9	101022201	1	螺钉SM4.76	Screw SM4.76
10	168072201	1	调线夹线器组件	Thread adjuster assembly
11	101020701	1	右线勾	Right line hook
12	101020201	1	螺钉SM4.37x40-6	Screw SM4.37x40-6
13+	168072501	1	夹线器组件M	Thread clamp assembly M
13+	101020802	1	夹线器组件H	Thread clamp assembly H
14	101020401	1	螺钉SM5.95x28-7	Screw SM5.95x28-7
15	125022201	1	螺钉M4x6	Screw M4x6
16	180090201	1	面板线勾	Panel hook
17	101010801	1	挑线杆防护罩	Protective cover
18	101020502	1	大线勾	Big hook
19	115111601	1	螺母SM4.37	Nut SM4.37
20	013760532	1	螺钉SM5.95x28-5	Screw SM5.95x28-5
21	166072501	1	电子夹线器	Electronic clamp
22	168070201	1	电磁铁罩	Electromagnet cover
23	062400616	4	螺钉M4x6	Screw M4x6
24	166070301	1	松线电磁铁组件	Loose wire solenoid asm
25	062500816	2	螺钉M5x8	Screw M5x8
26	168070802	1	电磁铁安装板	Solenoid mounting plate
27	168070901	1	松线销	Loose pin
28	048040342	1	E4卡簧	E4 circlip
29	169122701	1	松线复位簧	Wire feed reset spring
30	115091401	1	线导向	Line guide
31	062710812	1	螺钉SM4.76x28-9	Screw SM4.76x28-9

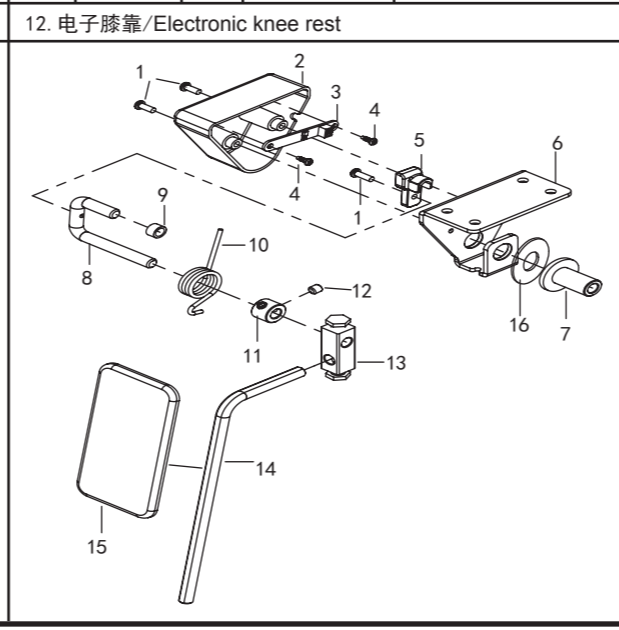
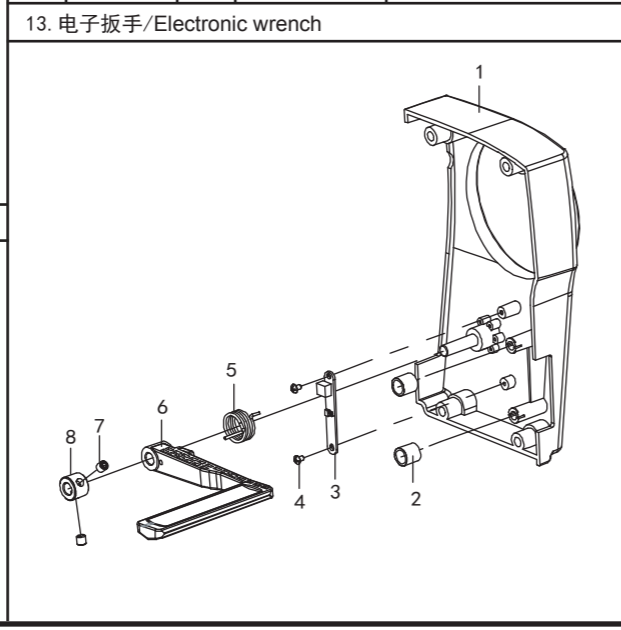
序号	图号	数量	名称	Name of parts
1	018501432	6	螺钉M5x14	Screw M5x14
2	028050246	5	弹簧垫片T5	Spring washer T5
3	025050132	4	垫圈5	Washer 5
4	166201301	1	步进电机组件	Stepper motor components
5	169110102	1	切线驱动曲柄	Tangent drive crank
6	166201201	1	切线曲柄	Tangent crank
7	125082401	1	切刀轴套	Cutter bush
8	014760832	1	螺钉SM5.95	Screw SM5.95
9	125082301	1	动刀复位簧	Moving knife reset spring
10	125082101	1	切线曲柄	Tangent crank
11	125080601	4	螺钉M4	Screw M4
12	125081901	1	刀架短连杆	Short connecting rod
13	125082001	1	刀架长连杆	Long connecting rod
14	125080401	3	螺钉M3x5	Screw M3x5
15	125082501	1	动刀压板	Moving knife pressure plate
16	115111301	3	螺钉SM4.37	Screw SM4.37
17	125081701	1	下刀架	Lower tool holder
18	021400306	2	螺母M4	Nut M4
19	125081801	1	垫圈	washer
20	125081601	1	上刀架	Upper tool holder
21	125080501	1	螺钉SM4.37	Screw SM4.37
22	125081401	1	上动刀	Upper moving knife
23	125081501	1	下动刀	Move the knife down
24	101081901	1	螺钉SM4.76	Screw SM4.76

序号	图号	数量	名称	Name of parts
1	166090301	1	LED倒缝开关组件	LED reverse seam switch asm
2	062500616	4	螺钉M5x6	Screw M5x6
3	115114801	2	电线夹U2	Wire clamp U2

序号	图号	数量	名称	Name of parts
1	115072401	3	梭芯	Bobbin
2	115024101	4	机针DBX1—(#14)	Machine needle DBX1—(#14)
3	125120801	2	头部防震垫	Head shock pad
4	115150401	2	机头铰链	Head hinge
5	101120501	2	机头铰链套	Head hinge sleeve
6	125120601	2	头部防震垫	Head shock pad
7	5050111	4	鞋钉	Shoe spikes
8	168111401	1	机头撑杆	Head support
9	115151001	1	中号油壶	Medium oil can
10	6040201	1	机头罩	Hood
11	115151401	1	线架组件2DR	Wire rack assembly 2DR
12	115151601	1	螺丝刀(小)	Screwdriver (small)
13	115151701	1	螺丝刀(中)	Screwdriver (medium)
14	115151901	1	连杆组件	Connecting rod assembly
15	166202001	1	托盘主体	Tray
16	166202102	2	托盘长支架	The tray support
17	115151801	1	螺丝刀(大)	Screwdriver (large)
18	5040104	3	尼龙扎带3x100	Nylon cable tie 3x100
19	152208101	12	木螺钉	Wood screws
20	169053020	1	电子膝靠总组件	Electronic knee rest
21	115152001	1	控速器	Speed controller
22	125122801	1	电源线	power cable



序号	图号	数量	名称	Name of parts
1	119012111	1	马达罩	Motor cover
2	169050901	2	膝控缓冲圈	Knee control buffer ring
3	169050801	1	膝控感应电路板	Knee control sensing circuit board
4	115082602	2	螺钉ST3x6	Screw ST3x6
5	119012301	1	手柄复位簧	Handle reset spring
6	119012201	1	倒缝手柄	Backstitch handle
7	014770532	2	螺钉SM6.35	Screw SM6.35
8	115072001	1	挡圈	Retaining ring



序号	图号	数量	名称	Name of parts
1	062401217	3	螺钉M4x12	Screw M4x12
2	169053011	1	膝提电路板罩	Knee lifter circuit board cover
3	166211601	1	膝控电路板组件	Induction circuit board
4	115082602	2	螺钉ST3x6	Screw ST3x6
5	169053012	1	磁铁安装座	Magnet mount
6	169050211	1	膝控支架	Knee lifter support
7	169053009	1	膝控轴限位套	Stop collar
8	169053010	1	膝控铰链弯轴	Knee lifter cambered axle
9	169053013	1	膝控减震圈	Knee lifter damping ring
10	169053015	1	膝控弹簧	Knee lifter spring
11	169053014	1	紧固	Tight circle
12	014600532	2	螺钉SM6.35	Screw SM6.35
13	169053007	1	膝控短接头	Knee control sub
14	169053006	1	膝控铰链长轴	Knee hinge long axis
15	169053004	1	膝靠	Knee lifter
16	169053016	1	垫圈	Washer

