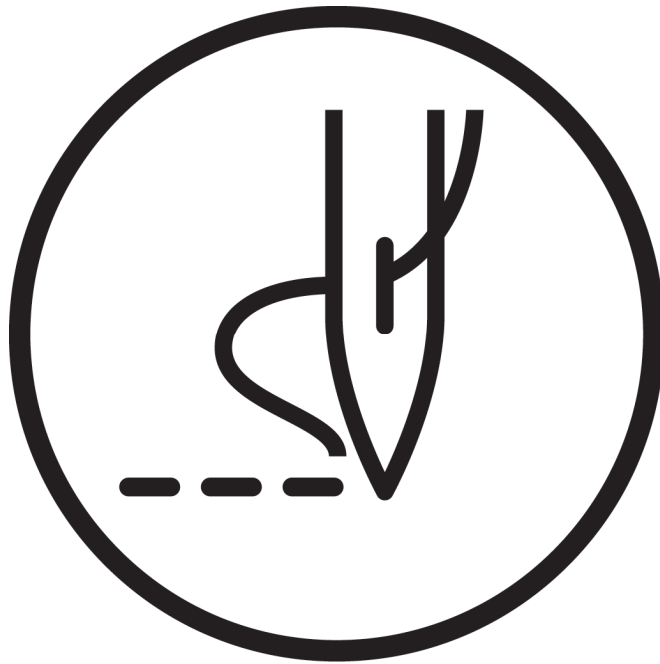

在使用缝纫机之前请阅读本使用说明书。
请将本使用说明书放在便于查阅的地方保管。

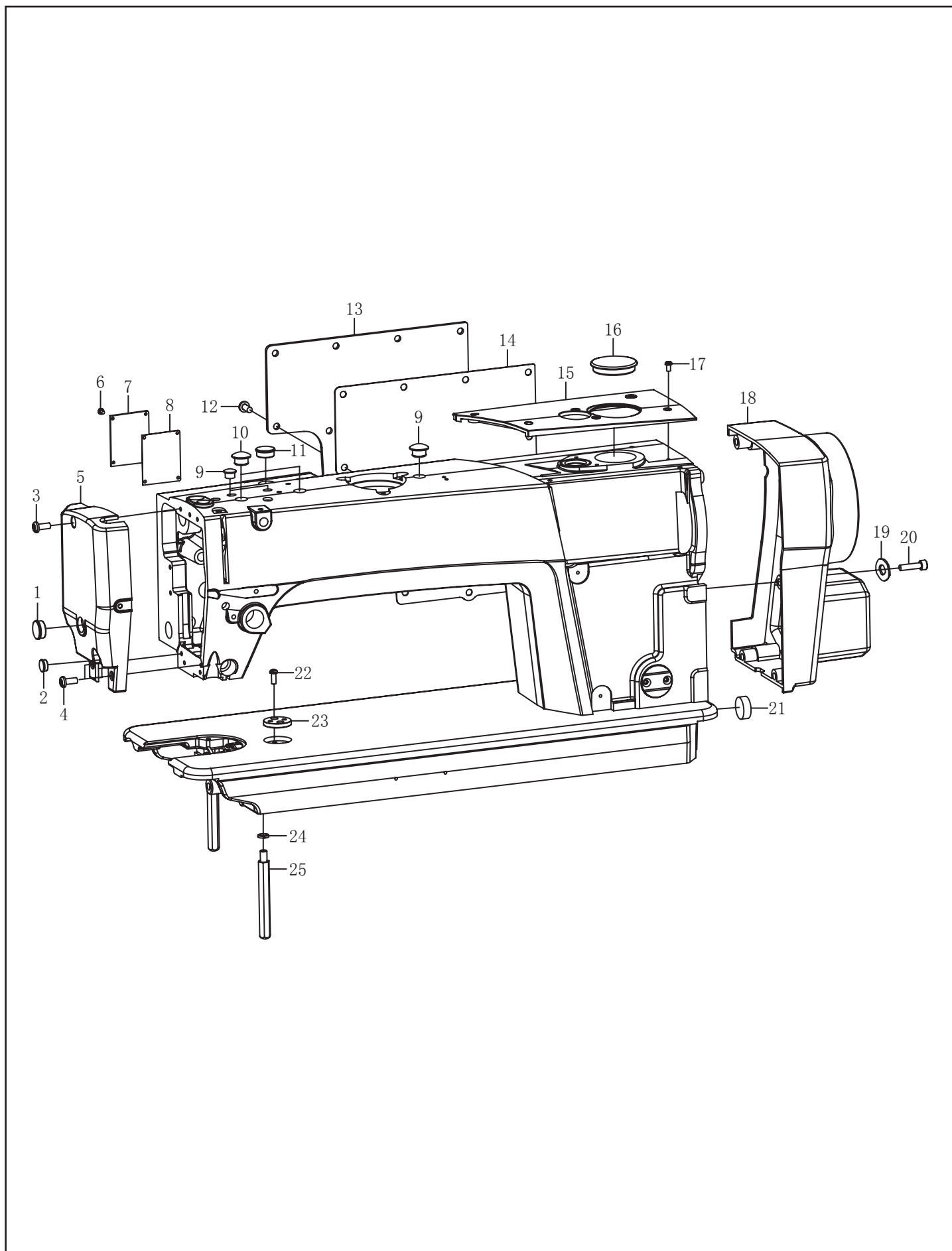
步进三驱上下复合送料同步车



目 录

1. 机体部分/Machine body	2
2. 上轴装置/Upper shaft mechanism	4
3. 压脚装置/Presser foot mechanism	8
4. 送料装置/Feed mechanism components.....	12
5. 上送料装置/Upper feeding device mechanism.....	16
6. 旋梭装置/Rotary hook mechanism.....	20
7. 穿线装置/Threading mechanism.....	22
8. 供油润滑装置/Lubrication	24
9. 切线装置/Thread trimmer mechanism	26
10. 倒缝开关装置/Quick reverse switch mechanism.....	28
11. 控制装置/Control components.....	28
12. 附件/Accessories	30

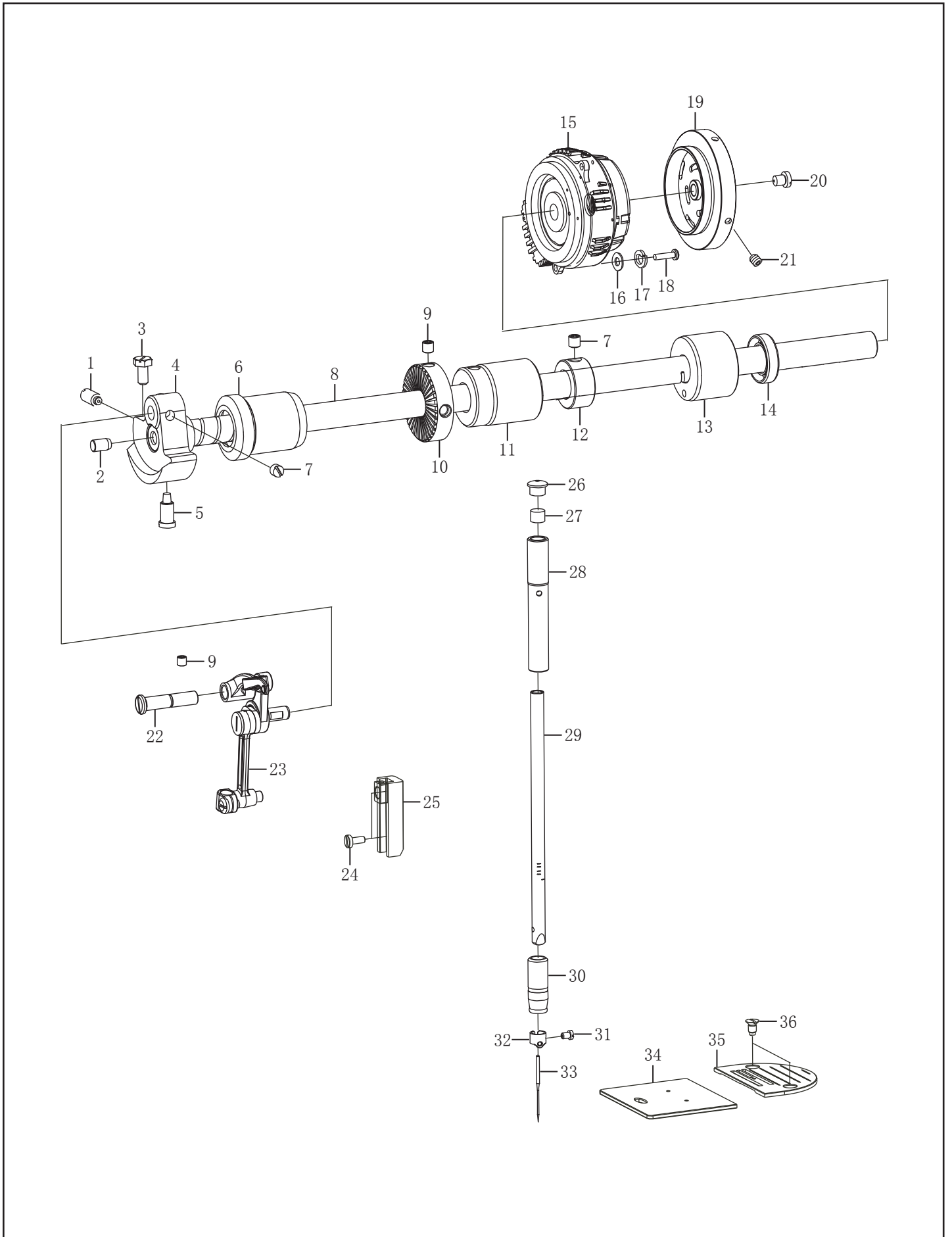
1.机体部分/Machine body



1. 机体部分/Machine body

序号	图号	数量	名称	NAME OF PARTS
1	103010201	1	橡皮塞 14.5	RUBBER CAP 14.5
2	124127601	1	橡皮塞 12.5	RUBBER CAP 12.5
3	101064001	1	螺钉SM4. 37×40-12	SCREW PAN SM4. 37×40-12
4	103011001	2	螺钉SM4. 37×40-16	螺钉SM4. 37×40-16
5	103010101	1	面板	FACE PLATE
6	062401016	4	螺钉 M4×10	SCREW PAN M4×10
7	103013501	1	小窗板	SMALL WINDOW
8	103013601	1	小窗板垫	SMALL WINDOW PAD
9	115011401	2	橡皮塞 8.5	RUBBER CAP 8.5
10	101011001	2	橡皮塞 12.2	RUBBER CAP 12.2
11	115010701	1	橡皮塞 15	RUBBER CAP 15
12	062501216	9	螺钉 M5×12	SCREW PAN M5×12
13	115010401	1	后盖板	REAR COVER
14	115010501	1	后盖板垫	GASKET
15	168012001	1	顶盖	UPPER COVER
16	168010901	1	橡皮塞 37.8	RUBBER CAP 37.8
17	168012501	5	螺钉 M3×8	SCREW PAN M3×8
18	103013301	1	电机罩	MOTOR COVER
19	025050132	4	垫片	WASHER
20	018502032	4	螺钉 M5×20	SCREW PAN M5×20
21	101011401	1	橡皮塞 21	RUBBER CAP 21
22	101013201	2	螺钉 SM4. 37×40-5.5	SCREW PAN SM4. 37×40-5.5
23	101012601	1	卷边器座	EDGE WINDING DEVICE
24	028060246	2	弹簧垫圈 T6	SPRING WASHER T6
25	180011201	2	脚柱 B	BED SCREW STUD

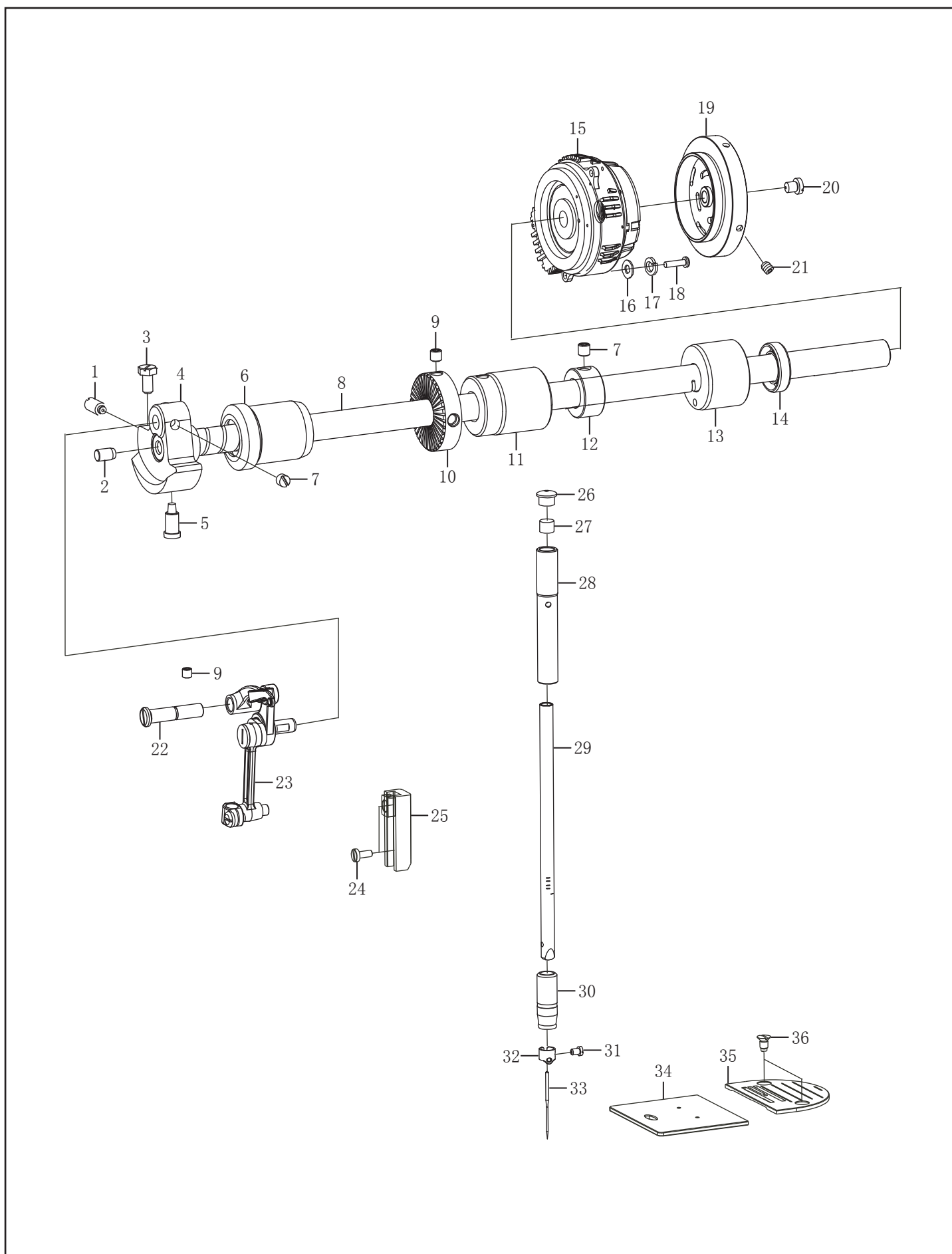
2. 上轴装置/Shaft mechanism



2. 上轴装置/Upper shaft mechanism

序号	图号	数量	名称	NAME OF PARTS
1	101031601	1	螺钉 SM7. 14	SCREW PAN SM7. 14
2	101031901	1	橡皮塞 6. 8	RUBBER CAP 6. 8
3	103020301	1	针杆曲柄夹紧螺钉	SCREW PAN SM6. 35
4	103021501	1	针杆曲柄	COUNTER WEIGHT
5	101031801	1	螺钉 SM7. 14	SCREW PAN SM7. 14
6	103020601	1	上轴前轴套	MAIN SHAFT BUSHING FRONT
7	101031701	3	螺钉 SM6. 35×40-6	SCREW PAN SM6. 35×40-6
8	103021001	1	上轴	MAIN SHAFT
9	012060832	3	螺钉 M6×8	SCREW PAN M6×8
10	115021201	1	绕线驱动轮	BOBBIN WINDER DRIVING WHEEL
11	168020901	1	上轴中轴套	BUSHING INTERMSDIATE
12	101032501	1	上轴挡圈	THRUST COLLAR
13	101032701	1	上轴后轴套	MAIN SHAFT BUSHING READ
14	115024001	1	油封	OIL SEAL
15	124025102	1	主轴电机组件	SPINDLE MOTOR ASSEMBLY
16	025050132	3	垫片 M5	WASHER M5
17	028050246	3	弹簧垫圈 T5	SPRING WASHER T5
18	018501632	3	螺钉 M5×16	SCREW PAN M5×16
19	124025202	1	手轮	HANG WHEEL ASM
20	115025401	1	螺钉 SM8. 73	SCREW PAN SM8. 73
21	014760832	2	螺钉 SM5. 95×28-8	SCREW PAN SM5. 95×28-8
22	103021301	1	挑线杆轴	THREAD TAKE-UP SHAFT
23	103021201	1	挑线杆组件	THREAD TAKE-UP LEVER ASM
24	115024601	2	螺钉 SM3. 57	SCREW PAN SM3. 57
25	103022801	1	滑块槽组件	SLIDE BLOCK SLOT ASSY
26	115010801	1	橡皮塞 8. 5	RUBBER CAP 8. 5
27	115025601	1	油毡	FELT
28	101040301	1	针杆上套	NEEDLE BAR BUSH U
29	101040404	1	针杆	NEEDLE BAR
30	103022201	1	针杆下套	NEEDLE BAR BUSH D
31	101041001	1	螺钉SM3. 18	SCREW PAN SM3. 18
32	115023301	1	针杆过线环	NEEDLE BAR THREAD GUIDE

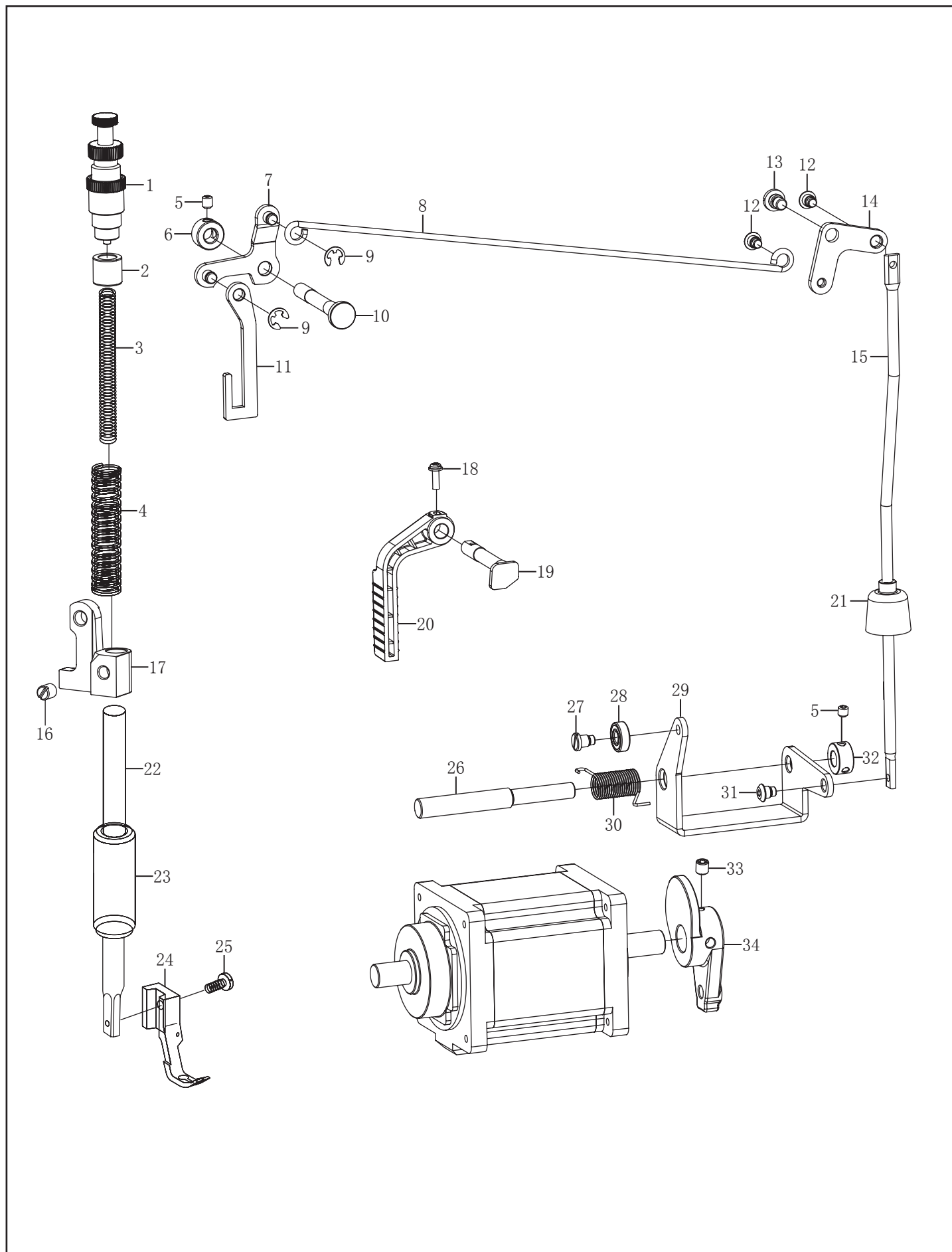
2. 上轴装置/Upper shaft mechanism



2. 上轴装置/Upper shaft mechanism

序号	图号	数量	名称	NAME OF PARTS
33	103022601	1	机针 DP×17 #21	NEEDLE DP×17 #21
34	103012401	1	推板组件	SLIDE PLATE COMPONENTS
35	103012502	1	针板	THREAD PLATE
36	115023501	2	螺钉 SM4.37	SCREW SM4.37

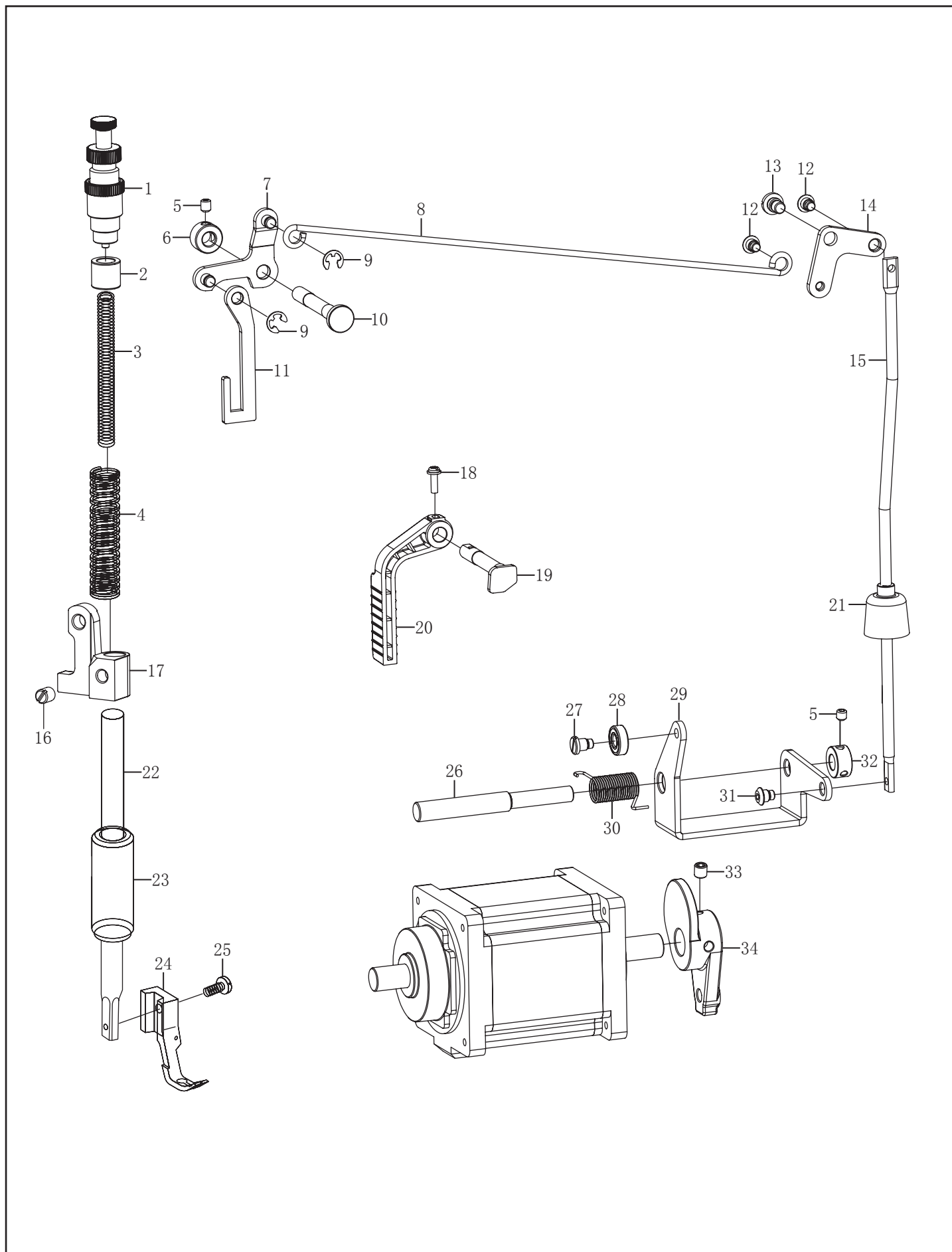
3. 压脚装置/Presser foot mechanism



3. 压脚装置/Presser foot mechanism

序号	图号	数量	名称	NAME OF PARTS
1	103032102	1	调压螺钉组件	PRESSER ADJUSTING SCREW
2	103031501	1	压紧杆轴套 U	PRESSER BAR BUSH U
3	103032701	1	辅助调压弹簧	SPRING
4	103032001	1	压紧杆导架弹簧	SPRING
5	014500632	4	螺钉 M5×6	SCREW PAN M5×6
6	124051101	1	紧圈	SET SCREW COLLAR
7	103030501	1	抬压脚前杠杆	HANK LIFTER LINK
8	103030901	1	抬压脚拉杆	LIFTING LEVER LINK
9	048050342	2	卡簧 E5	SNAP RING E5
10	103031001	1	前杠杆销	FRONT LEVER PIN
11	103030602	1	抬压脚吊钩	PRESSER FOOT HOOK
12	115034301	2	轴位螺钉 SM4.76	SCREW PAN SM4.76
13	101052301	1	后杠杆轴位螺钉	SCREW
14	167052401	1	抬压脚后杠杆	KNEE LIFTER LEVER
15	103031311	1	抬压脚顶杆	CONNECTING ROD VERTICAL
16	013760532	1	螺钉 SM5.95×28-5	SCREW PAN SM5.95×28-5
17	103031801	1	压紧杆导架	NEEDLE BAR GUIDE BAACKET
18	115032001	1	螺钉 M3.5×12	SCREW PAN M3.5×12
19	103030301	1	抬压脚扳手轴	PRESSER FOOT LIFTER SHAFT
20	103030101	1	抬压脚扳手	LIFTING LEVER
21	168033601	1	膝控提升杆橡皮塞	RUBBER CAP
22	103031701	1	压紧杆	PRESSER BAR
23	103031601	1	压紧杆轴套	PRESSER BAR BUSH
24	103032301	1	小压脚	SMALL PRESSER FOOT
25	103032401	1	螺钉 SM3.57	SCREW PAN SM3.57
26	103033001	1	抬压脚曲柄轴	PROTECT SHELF
27	166201001	1	轴位螺钉 SM4.76	SCREW PAN SM4.76
28	169034001	1	轴承	BEARING
29	103031411	1	抬压脚驱动曲柄	PRESSER FOOT DRIVING CRANK
30	166201402	1	压脚复位簧	SPRING
31	168031301	1	轴位螺钉 SM4.76×32	SCREW PAN SM4.76×32
32	168033501	1	曲柄轴挡圈	SET SCREW COLLAR
33	012600636	3	螺钉 M6×0.75-6	SCREW PAN M6×0.75-6

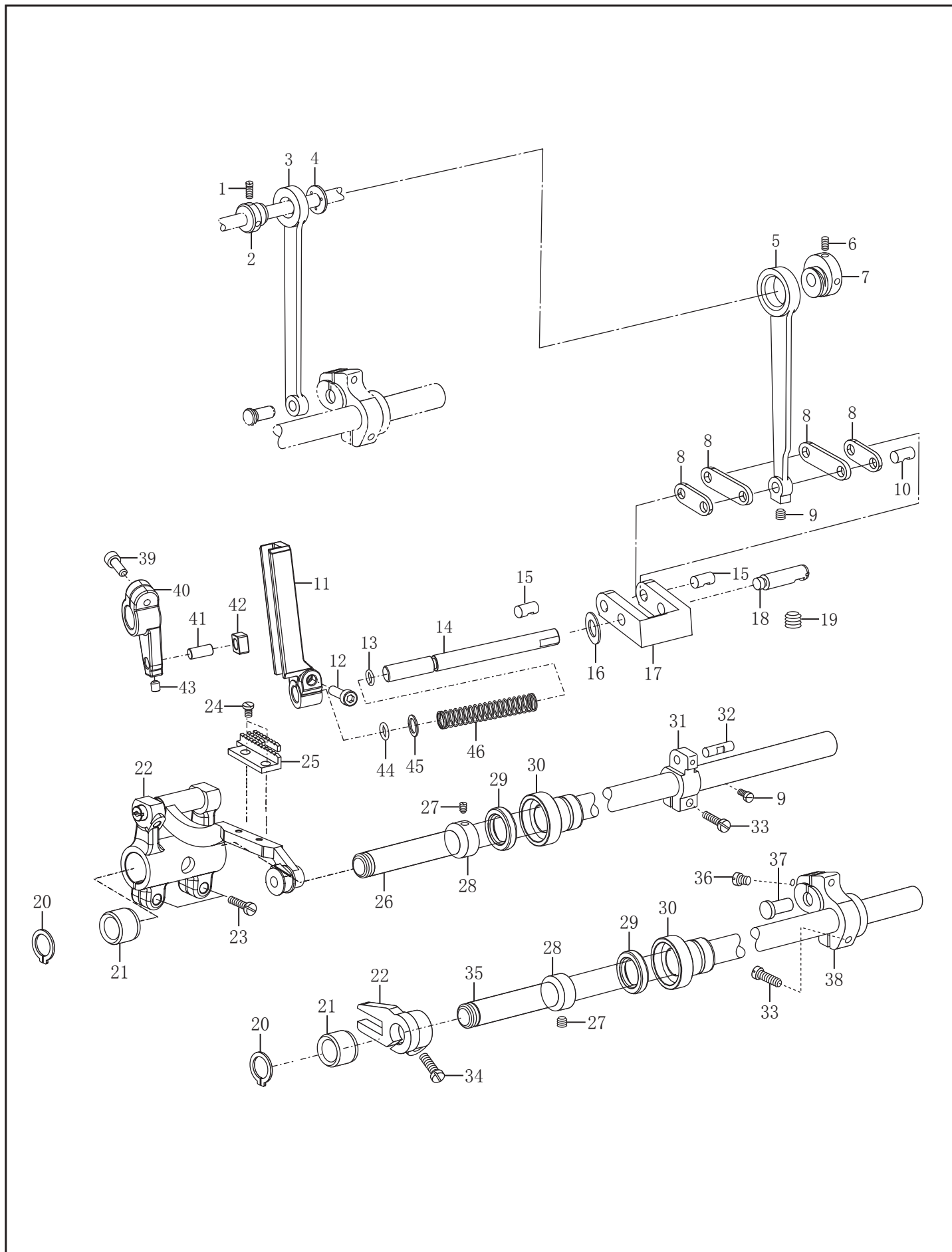
3. 压脚装置/Presser foot mechanism



3. 压脚装置/Presser foot mechanism

序号	图号	数量	名称	NAME OF PARTS
34	103036101	1	针距调节曲柄	NEEDLE PITCH ADJUSTMENT

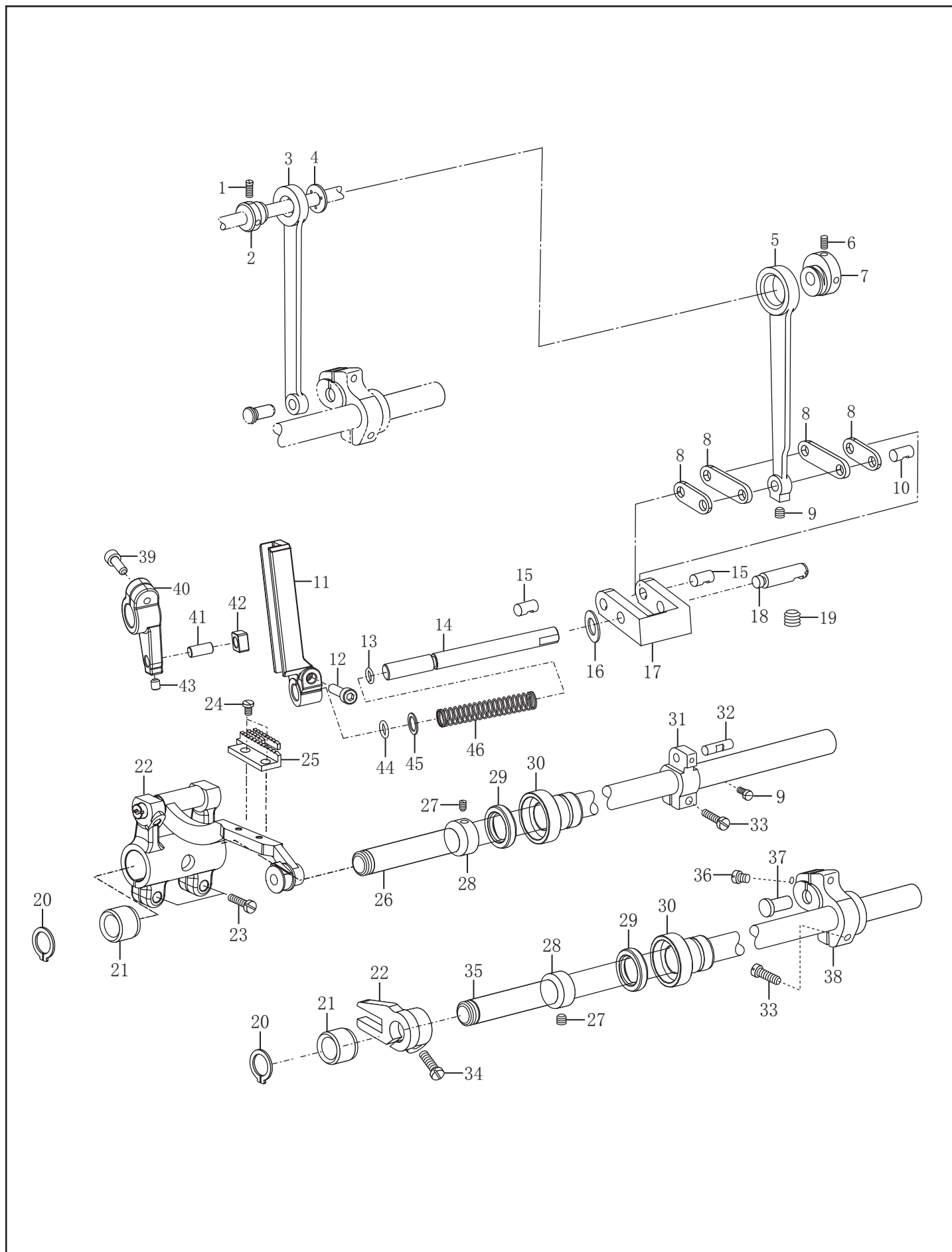
4. 送料装置/Feed mechanism components



4. 送料装置/Feed mechanism components

序号	图号	数量	名称	NAME OF PARTS
1	103046701	3	抬牙凸轮螺钉	SCREW PAN
2	103046601	1	抬牙凸轮	LIFT CAM
3	103046901	1	抬牙连杆	LIFTING ROD
4	103046801	1	凸轮隔离片	CAM SPACER
5	103045001	1	送布连杆	FEEDING LINK
6	103044801	3	送布凸轮螺钉	SCREW PAN
7	103044901	1	送布凸轮	FEED CAM
8	103045301	1	长短连杆组件	CONNECTING ROD ASSEMBLY
9	101062601	2	螺钉 SM4. 37×40-6	SCREW PAN SM4. 37×40-6
10	103045201	1	曲柄连杆长销	CRANK CONNECTING ROD LONG PIN
11	103048001	1	针距调节曲柄叉	
12	018502032	1	螺钉 M5×20	SCREW PAN M5×20
13	166201501	1	O型圈 φ9×1.5	O RING φ9×1.5
14	103048301	1	摆动座驱动轴	
15	103045601	1	曲柄连杆短销	CRANK CONNECTING ROD SHORT PIN
16	124090901	1	轴向垫圈	WASHER
17	103044102	1	针距调节座	STITCH ADJUSTMENT SEAT
18	168041301	1	切换器右销	SWITCHER RIGHT PIN
19	014060632	1	螺钉 M6×6	SCREW PAN M6×6
20	048140142	2	卡簧 C14	RING C14
21	103041101	2	抬牙、送布轴套	FEED ROCKER SHAFT METAL
22	103040201	1	牙架组件	FEED BAR ASSY
23	101062701	2	螺钉 SM4. 76×28-12	SCREW PAN SM4. 76×28-12
24	115047001	2	螺钉 SM3. 18	SCREW PAN SM3. 18
25	115046901	1	送布牙	FEED DOG
26	103040901	1	送布轴	FEED ROCKER SHAFT
27	014770632	4	螺钉 SM6. 35×40-6	SCREW PAN SM6. 35×40-6
28	101062901	1	送布轴挡圈	SET SCREW COLLAR
29	125064301	2	油封	OIL SEAL
30	168043001	2	抬牙、送布中套	FEED ROCKER SHAFT METAL
31	103041401	1	送布轴曲柄（右）	FEED SHAFT CRANK RIGHT
32	103041501	1	送布曲柄短销	FEEDING CRANK SHORT PIN
33	101063501	2	螺钉 SM4. 76×28-15	SCREW PAN SM4. 76×28-15

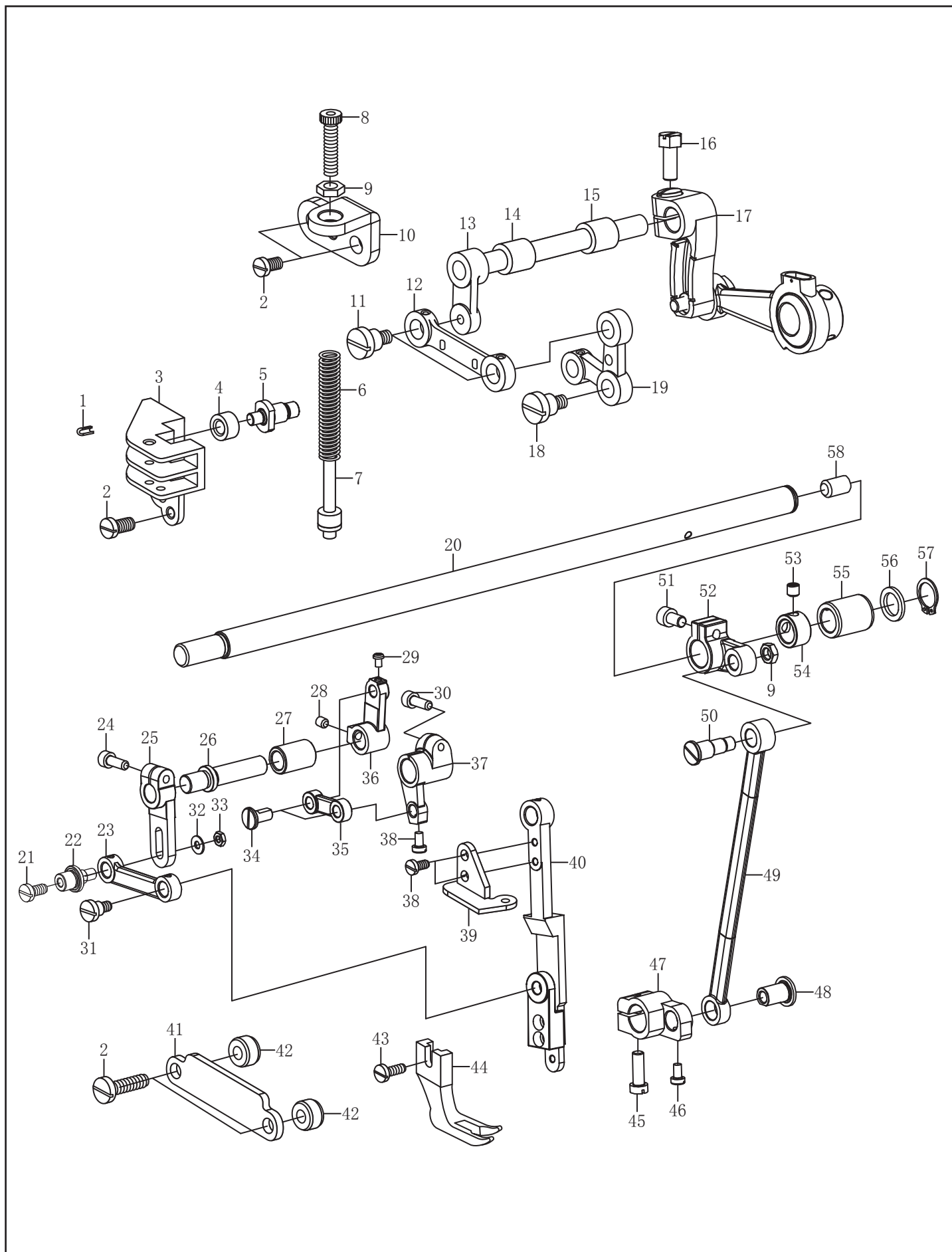
4. 送料装置/Feed mechanism components



4. 送料装置/Feed mechanism components

序号	图号	数量	名称	NAME OF PARTS
34	101064001	1	螺钉 SM4. 37×40-12	SCREW PAN SM4. 37×40-12
35	103042301	1	抬牙轴	FEED DRIVING SHAFT
36	101110301	1	螺钉 SM4. 76×28-17	SCREW PAN SM4. 76×28-17
37	103042901	1	抬牙轴曲柄铰链轴	CRANK HINGE SHAFT
38	103043001	1	抬牙后曲柄	CRANK
39	018501432	1	螺钉 M5×14	SCREW PAN M5×14
40	103048201	1	针距调节曲柄	NEEDLE PITCH ADJUSTMENT
41	166200601	1	驱动曲柄销	DRIVE CRANK PIN
42	166200402	1	针杆连接柱滑块	SLIDE BLOCK
43	014500532	1	螺钉 M5×5	SCREW PAN M5×5
44	115045001	1	O型圈12×2	O RING 12×2
45	166202801	1	垫片9	WASHER
46	166202701	1	防油限位簧	SPRING

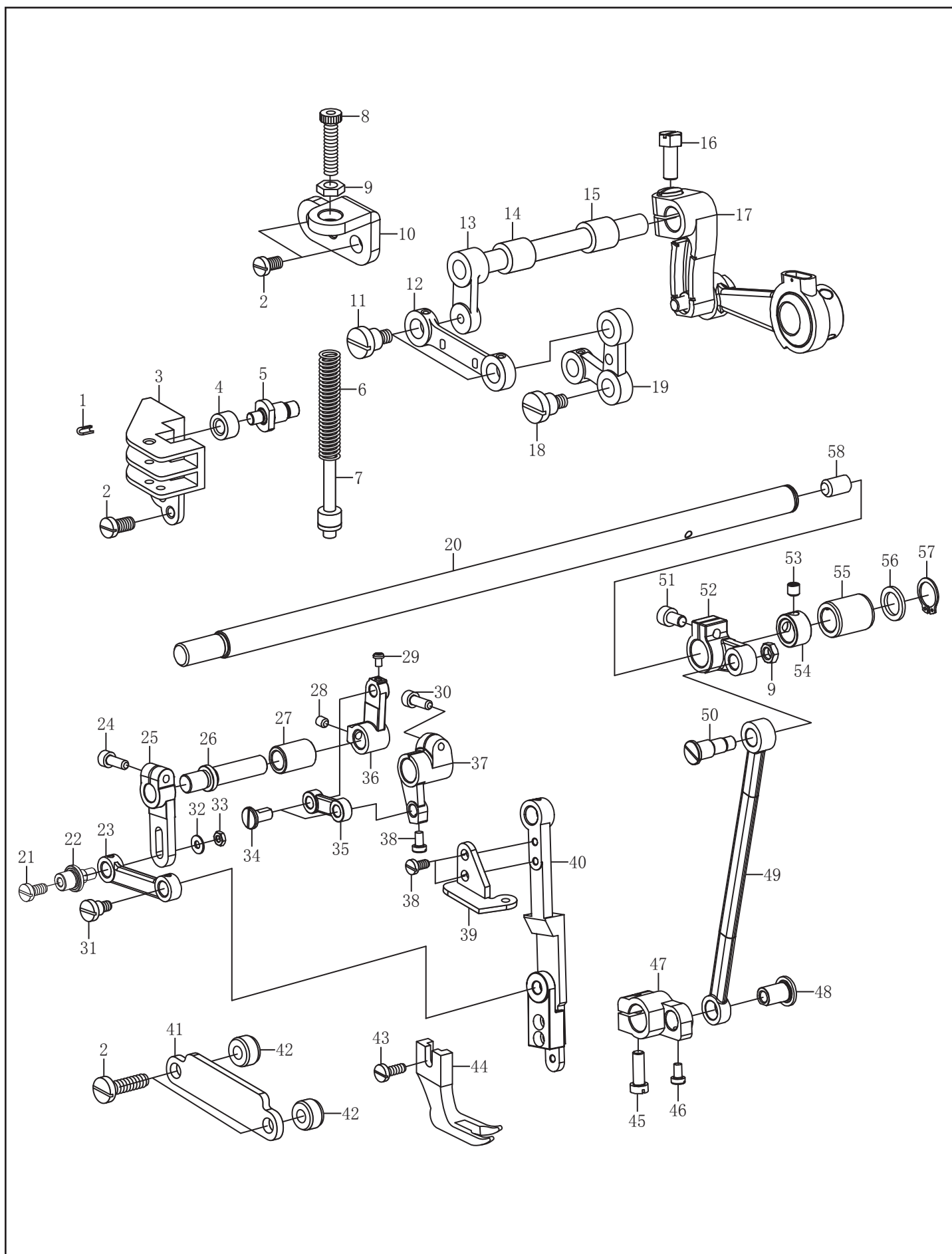
5. 上送料装置/Upper feeding device mechanism



5. 上送料装置/Upper feeding device mechanism

序号	图号	数量	名称	NAME OF PARTS
1	103050101	2	弹性圆柱销	ELASTIC CYLINDRICAL PIN
2	101064001	6	螺钉 SM4. 37×40-10	SCREW PAN SM4. 37×40-10
3	103052001	1	提升压脚导位板	GUIDE PLATE
4	103050401	1	滚柱	ROLLER
5	103050501	1	送料曲柄导柱轴	FEEDING CRANK GUIDE PIN
6	103050601	1	摆动脚调压杆弹簧	SPRING
7	103050701	1	调压杆弹簧导柱	SPRING GUIDE POST
8	103050801	1	摆压脚调压螺钉	PRESSURE REGULATING SCREW
9	101063701	2	摆压脚调压螺母	PRESSURE REGULATING NUT
10	103052701	1	摆压脚调压螺钉架	REGULATING SCREW RACK
11	103051102	2	曲柄连杆螺钉	SCREW PAN
12	103051203	1	压脚送料曲柄连杆	CRANK CONNECTING ROD
13	103051901	1	压脚升降曲柄组件	LIFTING CRANK ASSEMBLY
14	103055401	1	压脚提升轴前套	LIFTING SHAFT FRONT SLEEVE
15	103055301	1	压脚提升轴后套	LIFTING SHAFT BACK SLEEVE
16	103052501	1	偏心轮曲柄螺钉	SCREW PAN
17	103052301	1	压脚升降偏心轮组件	ECCENTRIC WHEEL ASSEMBLY
18	103053001	1	摆压脚杆螺钉	SCREW PAN
19	103051801	1	压脚送料曲柄	PRESSER FOOT FEED CRANK
20	103055901	1	压脚摆动轴	PRESSER FOOT SWING SHAFT
21	103052601	1	摆动曲柄销螺钉	SCREW PAN
22	103051302	1	摆动曲柄销	SWING CRANK PIN
23	103052101	1	摆压脚连杆	LIFTING FOOT LINK
24	018501432	1	螺钉 M5×14	SCREW PAN M5×14
25	103051401	1	摆动曲柄	SWING CRANK
26	103051501	1	摆动销	SWING PIN
27	103056001	1	压脚连杆轴套	CONNECTING ROD SLEEVE
28	014500632	2	螺钉 M5×6	SCREW PAN M5×6
29	062400616	1	螺钉 M4×6	SCREW PAN M4×6
30	101062701	1	螺钉 SM4. 76×28-12	SCREW PAN SM4. 76×28-12
31	103052401	1	摆压脚连杆螺钉	SCREW
32	025050132	1	垫圈	WASHER
33	021500106	1	螺母 M5	NUT M5

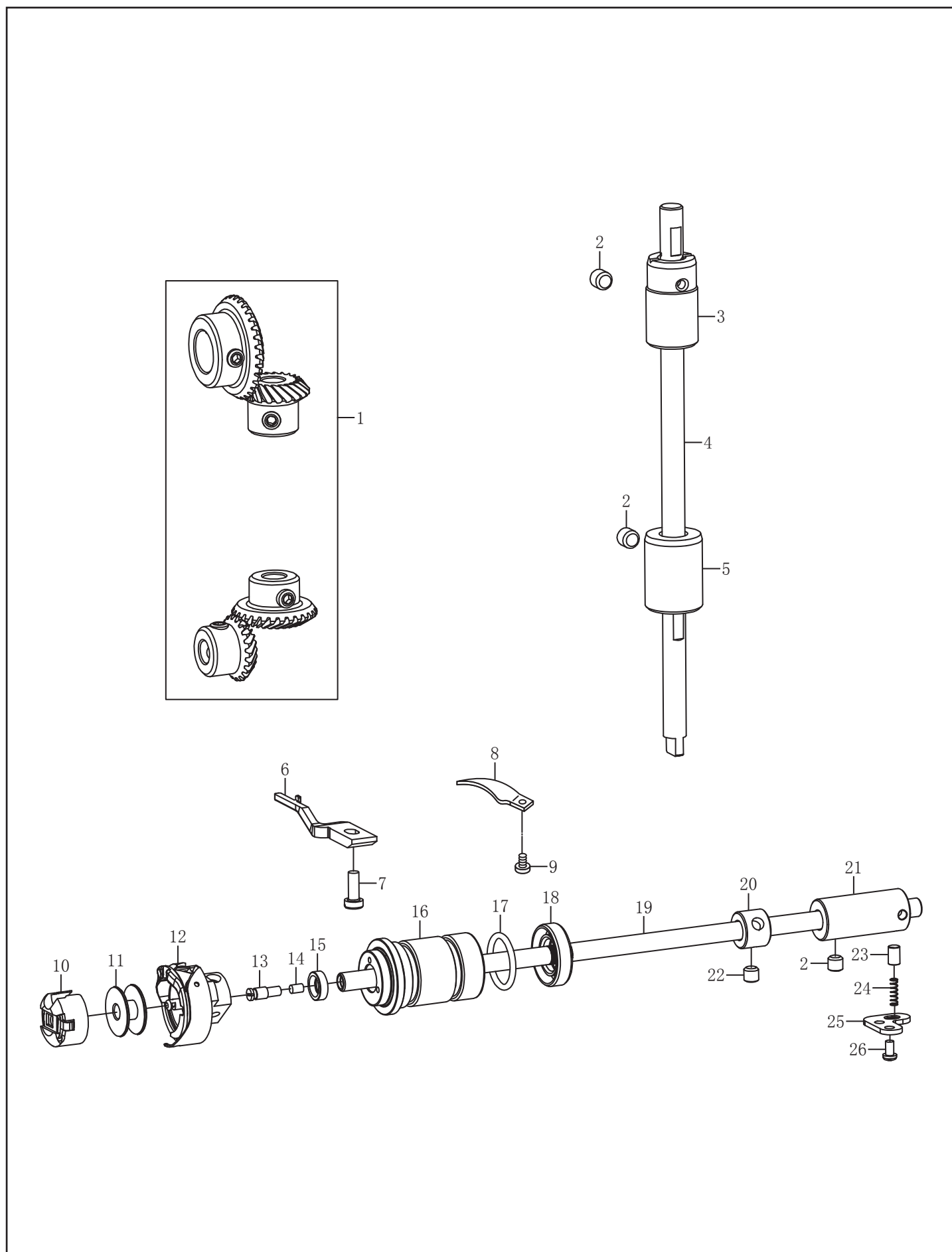
5. 上送料装置/Upper feeding device mechanism



5. 上送料装置/Upper feeding device mechanism

序号	图号	数量	名称	NAME OF PARTS
34	115043801	2	连杆轴	CONNECTING ROD SHAFT
35	103051701	1	摆动连杆	SWING LINK
36	103051601	1	摆动摇杆	SWING ROCKER
37	152300201	1	针杆摆动曲柄	NEEDLE CLAMP ASSY
38	101062401	3	螺钉 SM3.57	SCREW SM3.57
39	103053801	1	提升压脚导柱定位板	POSITIONING PLATE
40	103054001	1	摆压脚杆组件	SWING FOOT BAR ASSY
41	103054101	1	提升压脚连接压板	PRESSURE PLATE
42	103054203	2	连接压板垫圈	WASHER
43	103054301	1	压脚螺钉	PRESSER FOOT SCREW
44	103054401	1	摆压脚	SWING FOOT
45	101062701	1	螺钉 SM4.76×28-12	SCREW PAN SM4.76×28-12
46	101062601	1	螺钉 SM4.37×40-7	SCREW SM4.37×40-7
47	103054701	1	送布轴曲柄(中)	FEED SHAFT CRANK
48	103054801	1	送布轴曲柄销	CRANK PIN OF FEED SHAFT
49	103054501	1	摆压脚大连杆	PRESSER FOOT DALIAN LEVER
50	103055001	1	压脚摆动后曲柄螺钉	CRANK SCREW
51	018061232	1	螺钉 M6×12	SCREW M6×12
52	103052201	1	压脚摆动后曲柄	CRANK AFTER SWING
53	014770632	2	螺钉 SM6.35×40-7	SCREW SM6.35×40-7
54	101062901	1	紧圈	SET SCREW COLLAR
55	101063101	1	送布轴前轴套	FRONT SLEEVE OF FEED SHAFT
56	115048501	1	垫圈	WASHER
57	048140142	1	挡圈 C14	RING C14
58	101031901	1	橡皮塞 6.8	RUBBER CAP 6.8

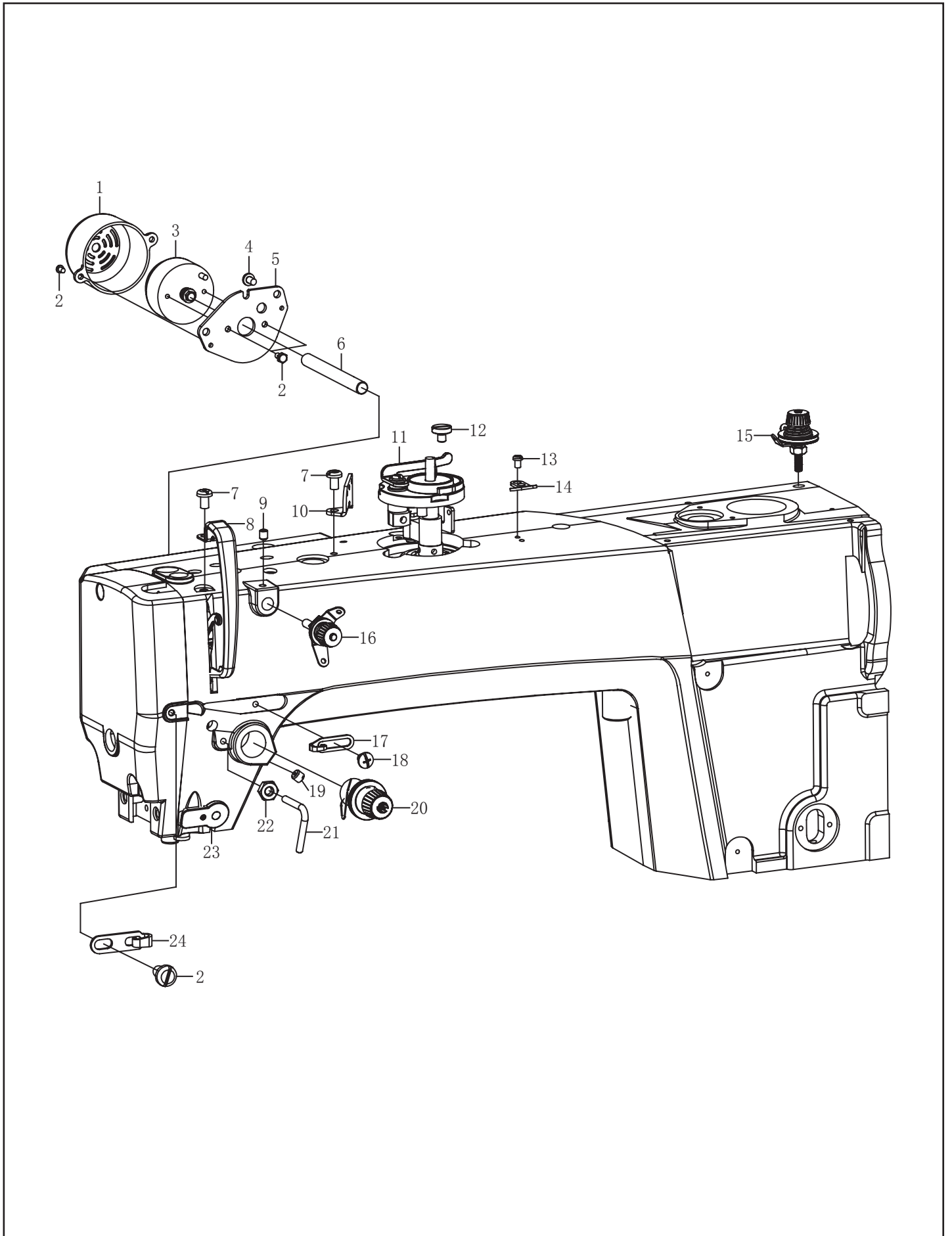
6. 旋梭装置/Rotary hook mechanism



6. 旋梭部件/Rotary hook mechanism

序号	图号	数量	名称	NAME OF PARTS
1	101041301	1	伞齿轮组件	BEVEL GEAR ASSY
2	014060632	3	螺钉 M6×6	SCREW PAN M6×6
3	168050301	1	竖轴上轴套	VERTICAL SHAFT BUSH U
4	103060411	1	竖轴	VERTICAL SHAFT
5	101042201	1	竖轴下轴套	VERTICAL SHAFT BUSH D
6	102042302	1	旋梭定位勾	HOOK STOPPER
7	115072601	1	螺钉 SM4.37	SCREW PAN SM4.37
8	103060801	1	分线片	LOWER THREAD FINGER
9	101080701	1	螺钉 SM3.57	SCREW PAN SM3.57
10	102043602	1	梭壳组件	BOBBIN GASE ASSY
11	102043502	1	梭芯	BOBBIN
12	102043401	1	旋梭组件	ROTARY HOOK ASSY
13	115071401	1	油盖螺钉	OIL COVER SCREW
14	115071901	1	油芯	OIL CORE
15	115073401	2	油封	OIL SEAL
16	103061701	1	下轴前套	PUMP BUSH
17	115073301	2	O型圈	O RING
18	115071601	1	油封	OIL SEAL
19	103061301	1	下轴	LOWER SHAFT
20	115072001	1	紧圈	SET SCREW COLLAR
21	103066101	1	下轴后套	BUSHING THREAD FINGER
22	014770432	2	螺钉 SM6.35	SCREW PAN SM6.35
23	103062301	1	柱塞	RUBBER PRESSER
24	115083301	1	柱塞弹簧	RUBBER PRESSER SPRING
25	103066201	1	柱塞压板	PLUNGER PLATE
26	062400616	2	螺钉 M4×6	SCREW PAN M4×6

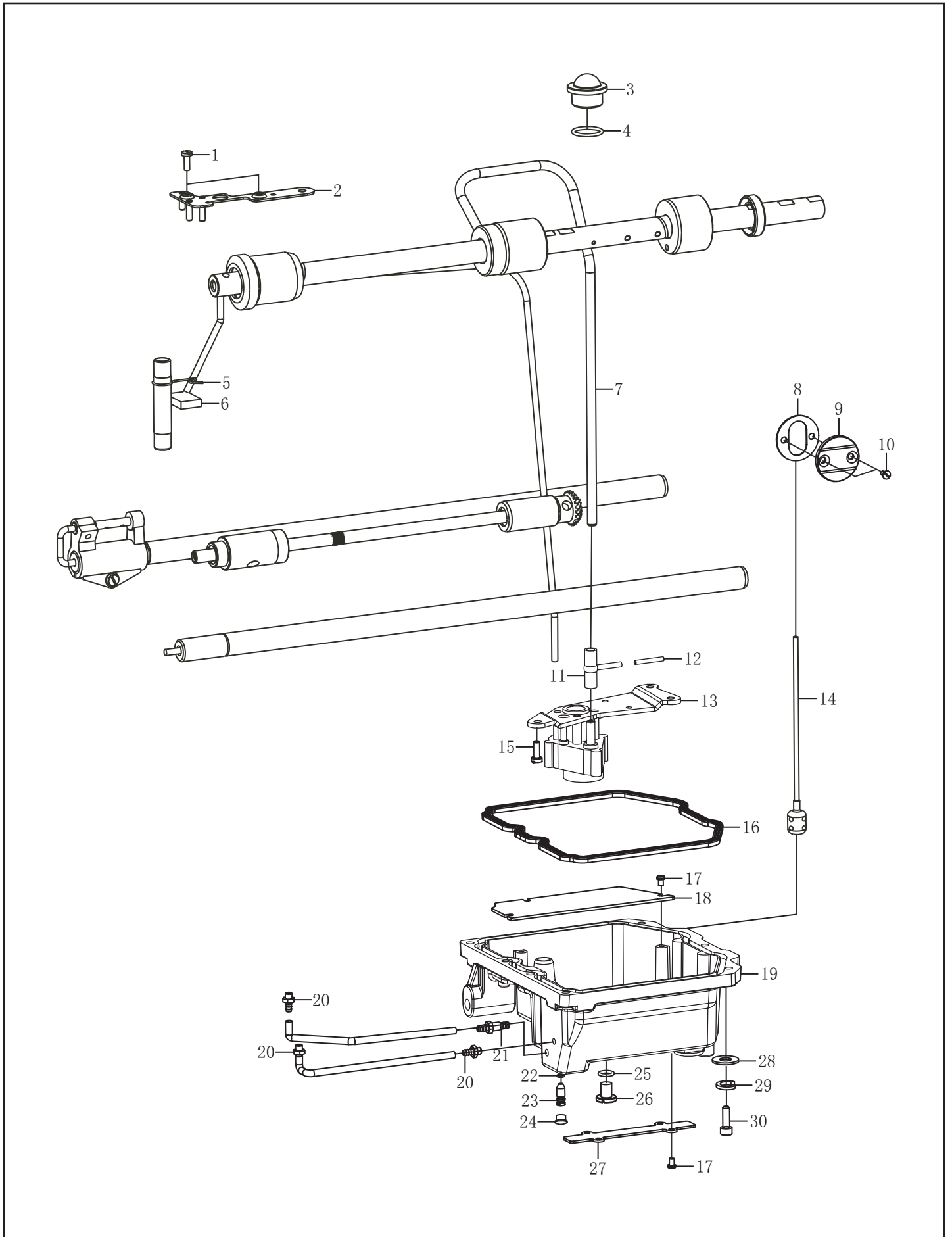
7. 穿线装置/Threading mechanism



7. 穿线装置/Threading mechanism

序号	图号	数量	名称	NAME OF PARTS
1	168070201	1	电磁铁罩	SOLENOID COVER
2	062400616	5	螺钉 M4×6	SCREW PAN M4×6
3	180090401	1	松线电磁铁组件	ELEC TENSION RELEASE ASSY
4	062500816	2	螺钉 M5×8	SCREW PAN M5×8
5	168070802	1	电磁铁安装板	SOLENOID SETTING PLATE
6	103011601	1	松线销	TENSION SHAFT
7	101010901	2	螺钉 SM4.76	SCREW PAN SM4.76
8	101010801	1	挑线杆防护罩	THREAD TAKE-UP LEVER COVER
9	014500632	1	螺钉 M5×6	SCREW PAN M5×6
10	115090301	1	穿线板	SPOOL PLATE
11	101022501	1	绕线器组件	BOBBIN WINDER ASM
12	101022601	3	螺钉 M5×6	SCREW PAN M5×6
13	101022801	2	螺钉 SM3.57	SCREW PAN SM3.57
14	101022701	1	切刀	KNIFE
15	168072101	1	绕线器夹线组件	BOBBIN THREAD TENSION ASM
16	168072201	1	调线夹线器组件	THREAD TENSION ASM
17	103010401	1	线勾	WIRE HOOK
18	103010701	1	螺钉 SM3.57	SCREW PAN SM3.57
19	013760532	2	螺钉 SM5.95×28-5	SCREW PAN SM5.95×28-5
20	103010901	1	夹线器组件	THREAD TENSION ASSY
21	101020502	1	大线勾	P-BAR BRACKET THREAD GUIDE
22	115111601	1	螺母 SM4.37	NUT SM4.37
23	180090501	1	电子夹线器	THREAD TAKE-UP
24	103010301	1	面线线勾	FACE PLATE THREAD GUIDE

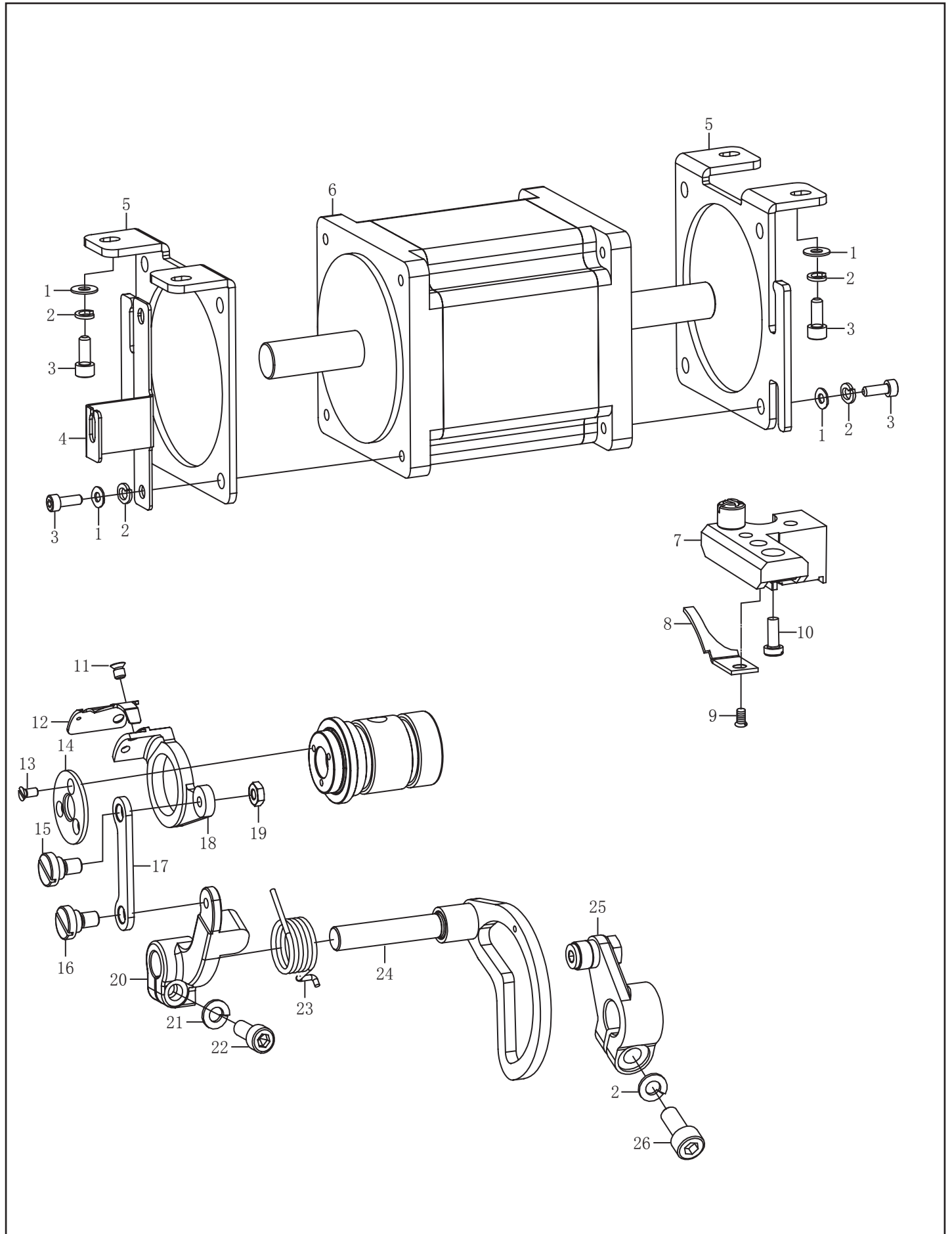
8. 供油润滑装置/Lubrication



8. 供油润滑装置/Lubrication

序号	图号	数量	名称	NAME OF PARTS
1	115031001	2	螺钉 SM3.57	SCREW PAN SM3.57
2	101090701	1	油线安装板	OIL THREAD BORAD ASM
3	101090901	1	油窗	OIL GAUGE WINDOW
4	101091001	1	O 型圈	O RING
5	101090401	1	回油管夹	OIL FELT PRESSER
6	101090301	1	油毡	FELT
7	103070702	1	上轴供油管	MAIN SHAFT OIL TUBE
8	168063501	1	油窗防油垫	OIL WINDOW CUSHION
9	168063401	1	油量视窗板	OIL GAGE WINDOW
10	115110401	2	螺钉 SM3.57	SCREW PAN SM3.57
11	101091701	1	供油管接头	OIL SUPPLY
12	125092201	1	铝管接头	ALUMINUM PIPE JOINT
13	103071111	1	油泵组件	PUMP UNIT
14	103071201	1	浮球组件	FLOAT ASSY
15	018501232	3	螺钉 M5×12	SCREW PAN M5×12
16	103072601	1	油盒密封垫	OIL BOX SEALING RING
17	062350616	7	螺钉 M3.5×6	SCREW PAN M3.5×6
18	103072801	1	油盒盖	THE OIL BOX COVER
19	103072711	1	油盒	OIL BOX
20	115080401	3	供油口	OIL FEEDING PIPE
21	168062601	1	供油口	OIL FEEDING PIPE
22	081004870	1	O 型圈 P4	O RING P4
23	115081501	1	调节螺钉	ADJUSTING SCREW
24	115011001	1	橡皮塞 10.5	RUBBER CAP 10.5
25	168063001	1	O 型圈	O RING
26	115080901	1	放油螺钉 M8	SCREW PAN M8
27	124123201	1	电线压板	WIRE PLATE
28	025050132	7	垫圈	WASHER
29	028050246	7	弹性垫圈 T5	SPRING WASHER T5
30	018502032	7	螺钉 M5×20	SCREW PAN M5×12

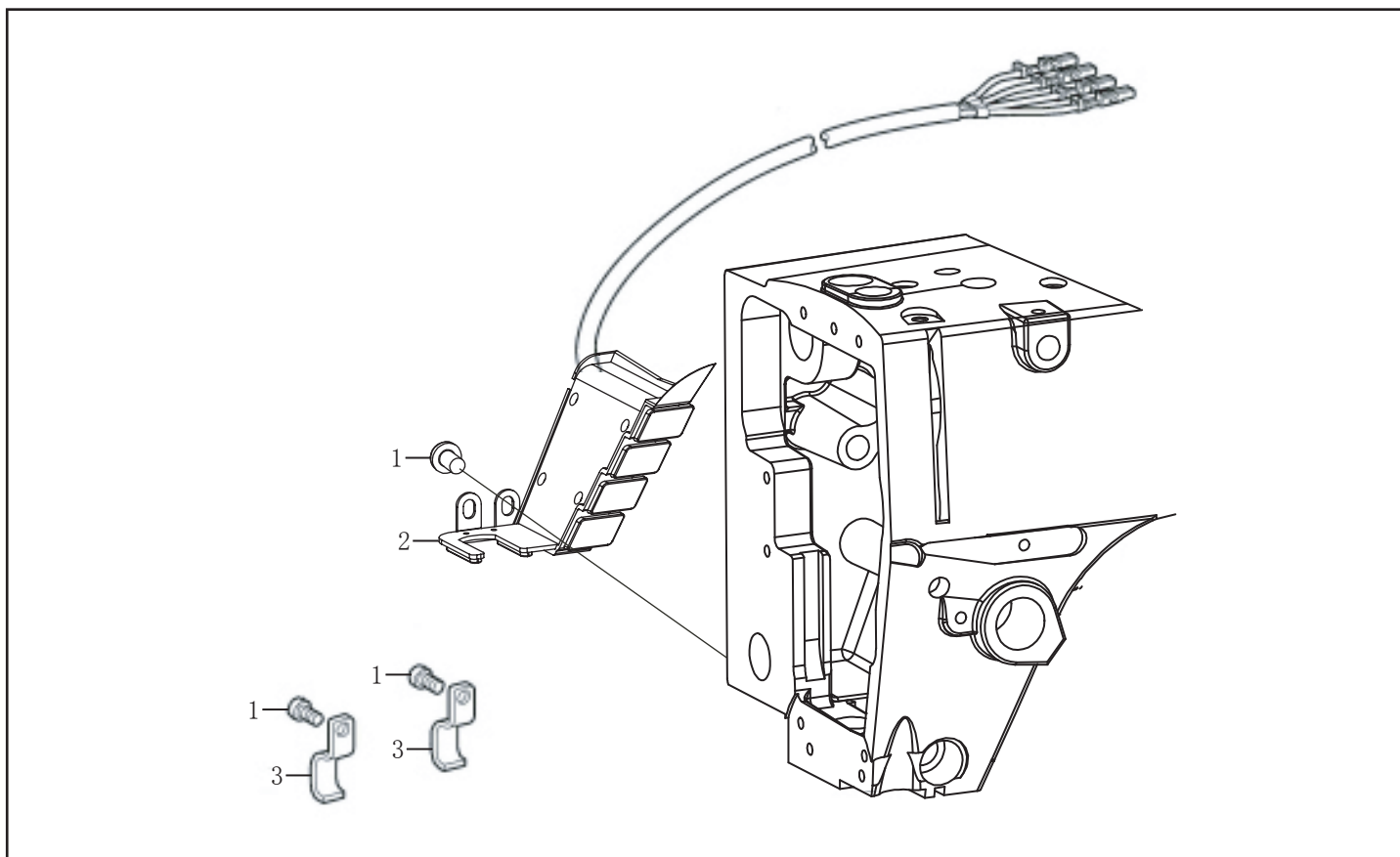
9. 切线装置/Thread trimmer mechanism



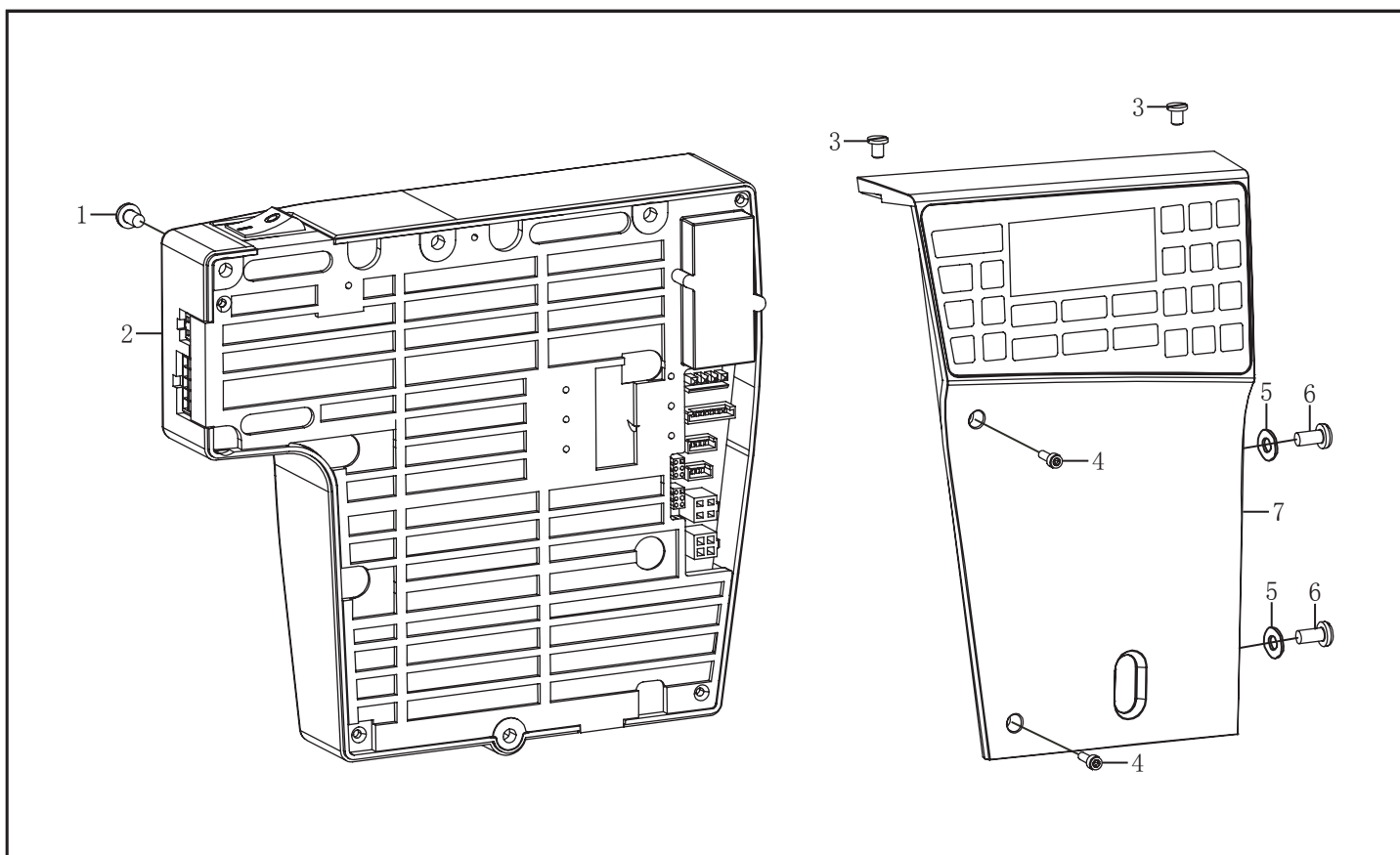
9. 切线装置/Thread trimmer mechanism

序号	图号	数量	名称	NAME OF PARTS
1	025050132	12	垫圈	WASHER
2	028050246	14	弹性垫圈 T5	SPRING WASHER T5
3	018501432	12	螺钉 M5×14	SCREW PAN M5×10
4	103071501	1	油管夹	OIL PIPE CLAMP
5	103081501	2	电机安装板	SOLENOID SETTING PLATE
6	103080601	1	剪线电机	MOTOR
7	103080401	1	定刀座组件	FIXED CUTTER HOLDER ASSY
8	103080701	1	定刀	FIXED KNIFE
9	115110401	1	螺钉 SM3.57	SCREW PAN SM3.57
10	103081201	1	螺钉 SM4.37	SCREW PAN SM4.37
11	115111301	2	螺钉 SM4.37	SCREW PAN SM4.37
12	103080901	1	动刀	MOVABLE KNIFE
13	125080401	3	螺钉 M3×7	SCREW PAN M3×7
14	125082501	1	动刀压板	KNIFE HOLLDER PRESSER PLATE
15	103081301	1	螺钉 SM4.37×40	SCREW PAN SM4.37×40
16	169032201	1	螺钉 SM4.76×28	SCREW PAN SM4.76×28
17	103080301	1	刀架连杆	KNIFE HOLLDER CONNECTING
18	103080201	1	刀架	HOLER M-KNIFE
19	115111601	2	螺母 SM4.37	NUT SM4.37
20	103080101	1	切线杆	THREAD TRIMMER LEVER
21	028060246	1	弹性垫圈 T6	SPRING WASHER T6
22	018061832	1	螺钉 M6×18	SCREW PAN M6×18
23	103084701	1	切刀曲柄簧	SPRING
24	103081711	1	切线曲柄	THREAD TRIMMER LEVER
25	103081801	1	切线驱动曲柄组件	THREAD TRIMMER LEVER SHAFT
26	018502032	1	螺钉 M5×20	SCREW PAN M5×20

10. 倒缝开关装置/Quick reverse switch mechanism



11. 控制装置/Control components



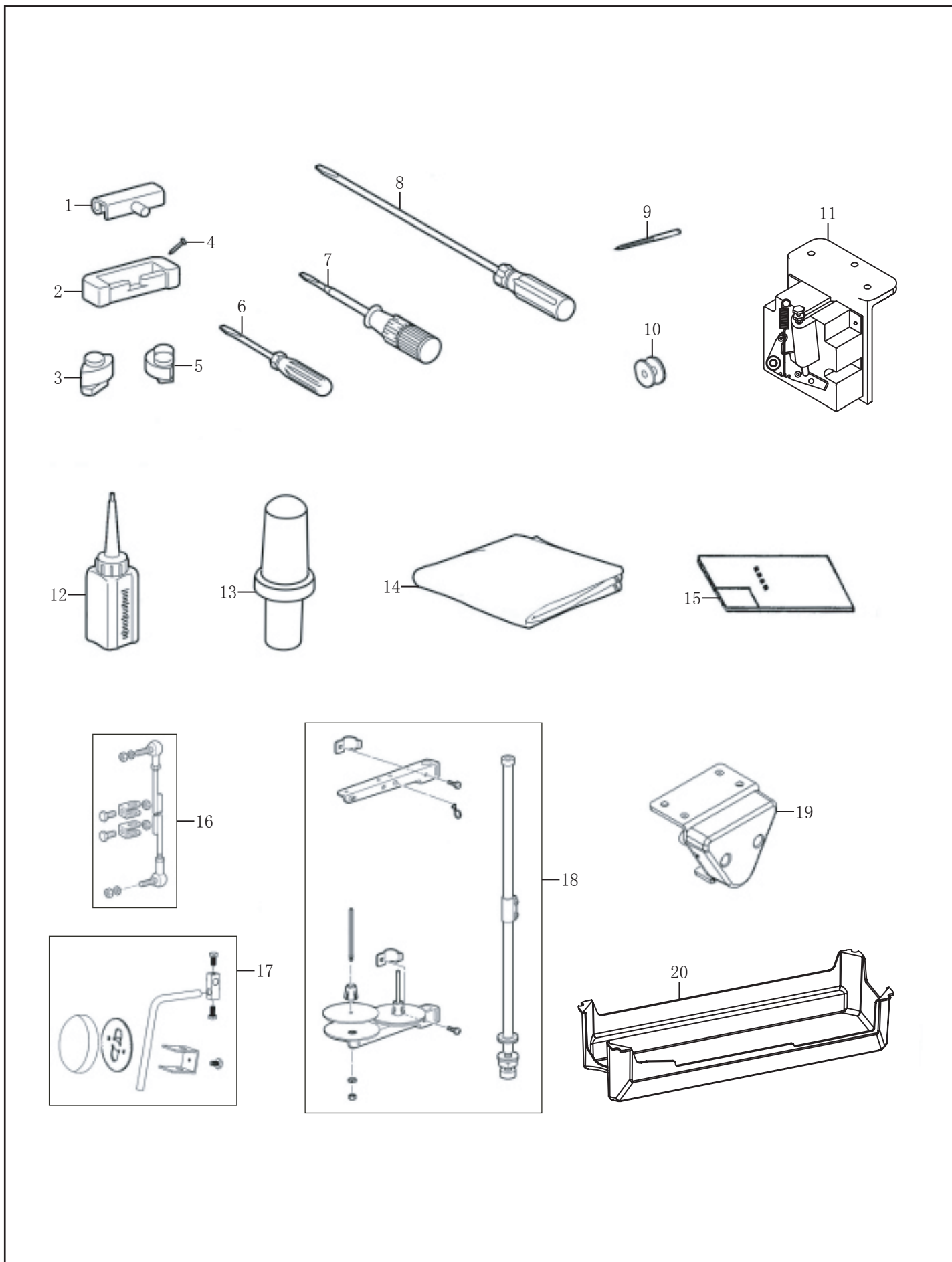
10. 倒缝开关装置/Quick reverse switch mechanism

序号	图号	数量	名称	NAME OF PARTS
1	062500816	4	螺钉 M5×8	SCREW PAN M5×8
2	103090301	1	倒缝开关组件	R-SWICH ASSY
3	115140301	2	电线夹 U2	CORD HOLDER U2

11. 控制装置/Control components

序号	图号	数量	名称	NAME OF PARTS
1	018502032	3	螺钉 M5×20	SCREW PAN M5×20
2	166100211	1	控制箱	CONTROL BOX ASSY
3	101020201	2	螺钉 SM4. 37×40-6	SCREW PAN SM4. 37×40-6
4	168012501	2	螺钉 M3×8	SCREW PAN M3×8
5	025050132	2	垫片 M5	WASHER M5
6	062501817	2	螺钉 M5×8	SCREW PAN M5×8
7	168101301	1	操作盒组件	OPERATION PANEL

12. 附件/Accessories



12. 附件/Accessories

序号	图号	数量	名称	NAME OF PARTS
1	115150401	2	机头铰链	MACHINE HINGE PLATE
2	115150501	2	机头铰链套	HINGE SLEEVE HEAD
3	115150601	2	头部防震垫	QUAKEPROOF WASHER
4	115150701	4	钉	NAIL
5	115150801	2	头部防震垫 R	QUAKEPROOF WASHER R
6	115151601	1	螺丝刀 (小)	SCREW DIRVER S
7	115151701	1	螺丝刀 (中)	SCREW DIRVER M
8	115151801	1	螺丝刀 (大)	SCREW DIRVER B
9	103022601	4枚	机针 DP×17 #21	NEEDLE DP×17 #21
10	102043502	2	梭芯	BOBBIN
11	115152001	1	控速器	CONTROLLER
12	115151001	1	中号油壶	OIL RESERIVIR
13	115150901	1	机头撑杆	HEAD REST
14	115151301	1	机头罩	HEAD COVER
15	103101401	1	零件手册	PARTS BOOK
16	115151901	1	连杆组件	CONNECTING ROD ASSY
17	115060101	1	膝控组件	KNEE LIFTER ASSY
18	115151401	1	线架组件 2DR	THREAD STAND ASM 2DR
19	169050101	1	膝靠组件	ELECTRONIC KNEE CONTROL
20	169085001	1	油盘	OIL PAN

