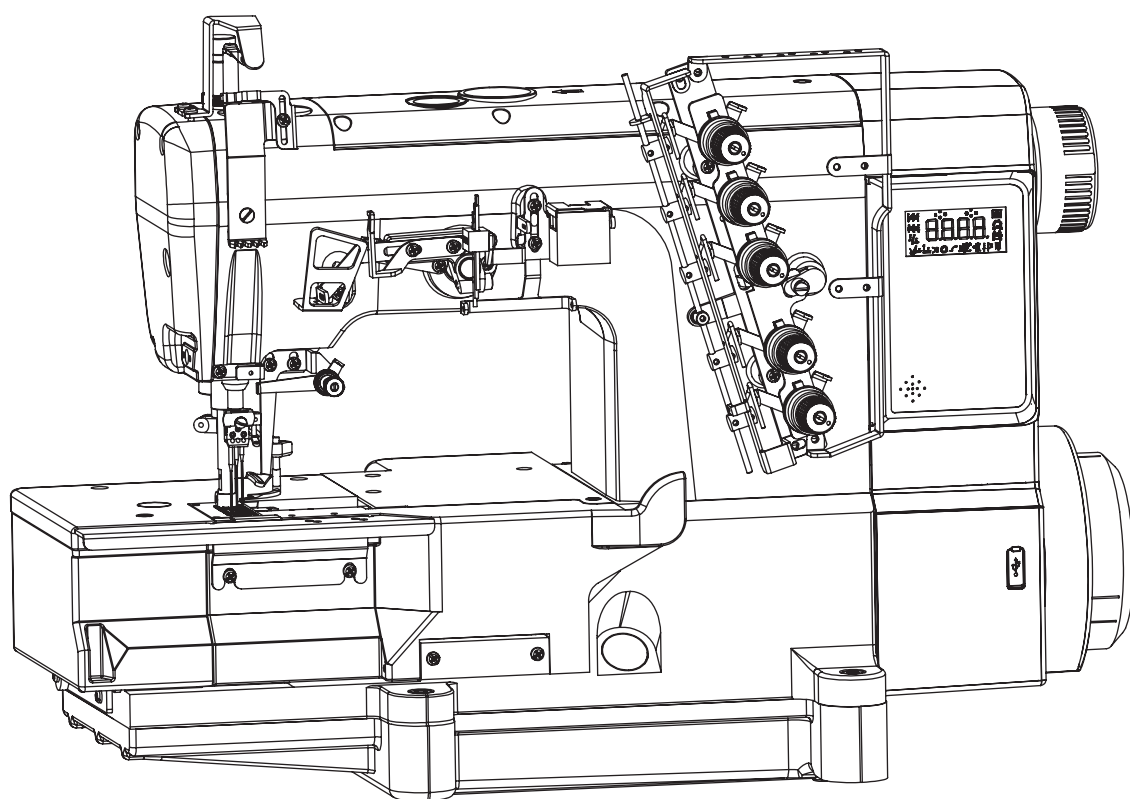


PARTS BOOK

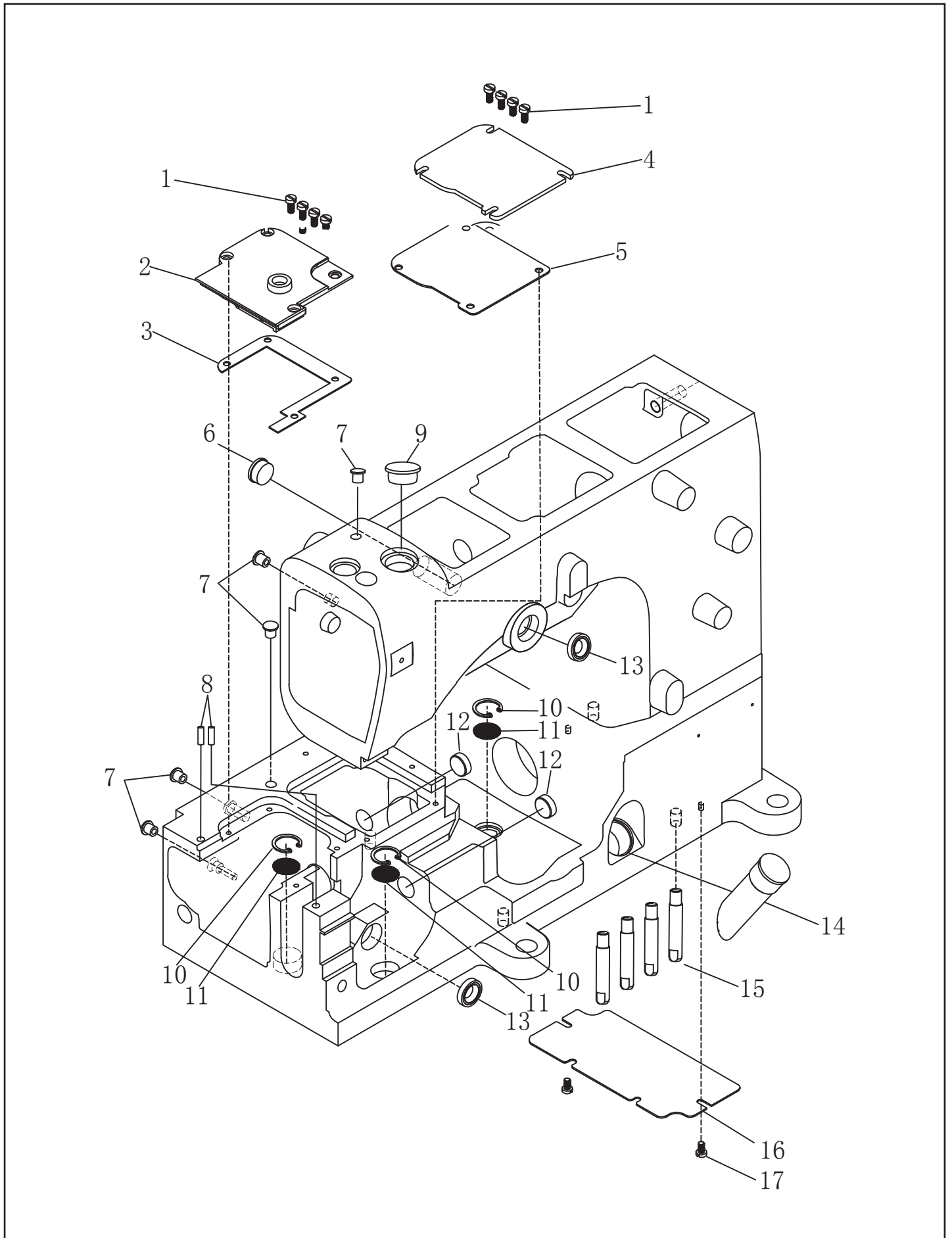
在使用缝纫机之前请阅读本使用说明书。
请将本使用说明书放在便于查阅的地方保管。



目 录

1. 机体部分/Machine body	2
2. 罩壳部分/Cover assemblies	4
3. 缝台部件/Cloth plate assemblies	6
4. 下轴部件/Hook shaft assemblies	8
5. 上轴部件/Main shaft assemblies	10
6. 针杆部件/Main shaft assemblies	12
7. 护针部件/Needle guard assemblies	14
8. 弯针部件/Looper assemblies	16
9. 送布部件/Main feed mechanism components	18
10. 差动部件/Differential assemblies	22
11. 压脚部件/Presser form assemblies	24
12. 喂针部件/Needle feeding assemblies	26
13. 松线部件/Thread loosing assemblies	28
14. 挑线部件/Thread guide assemblies	30
15. 下过线部件/Lower thread tension components	34
16. 供油部件/Lubrication mechanism components	36
17. 油泵部件/Pump components	38
18. 导布部件/The attachment	40
19. 附件部件/Accessories	42

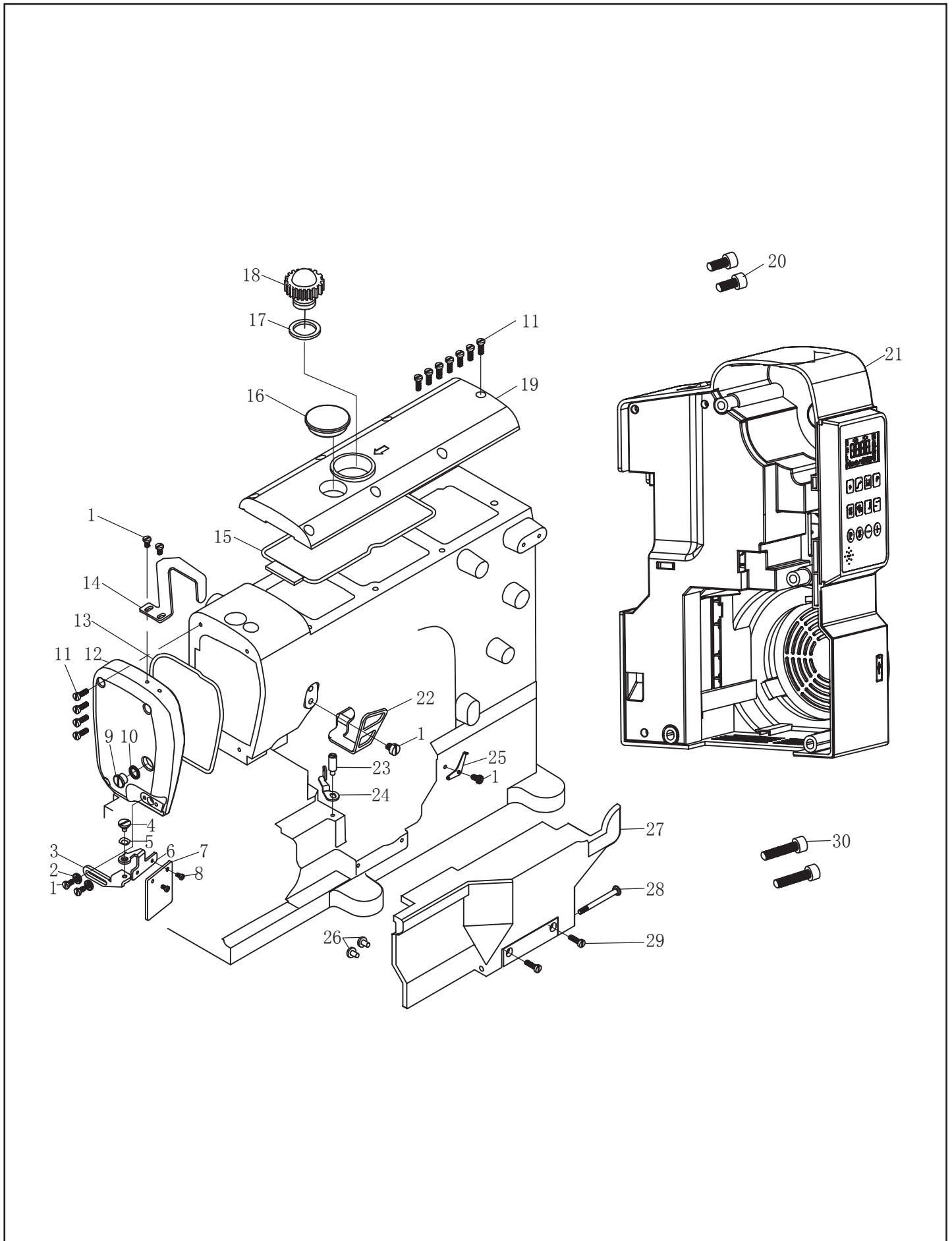
1.机体部分/Machine body



1. 机体部分/Machine body

序号	图号	数量	名称	NAME OF PARTS
1	150010101	8	螺钉 M4×7	SCREW PAN M4×7
2	150010201	1	针距按钮盖	PUSH BUTTON COVER
3	150010301	1	针距按钮盖垫片	OIL PROTECTING GASKET
4	150010401	1	弯针传动仓板	LOOPER DRIVER PLATE
5	150010501	1	弯针传动盖垫片	OIL GASKET
6	115010701	1	橡皮塞 15.5	RUBBER CAP 15.5
7	150010701	5	橡皮塞 7	RUBBER CAP 7
8	150010801	2	销子	PIN
9	150010901	1	橡皮塞 20	RUBBER CAP 20
10	150011001	3	C型卡簧	C RING
11	150011101	3	过滤网 (20目)	FILITERHALFTONE
12	150011201	2	橡皮塞 15.3×6	RUBBER CAP 15.3×6
13	150011301	2	油封	OIL SEAL
14	150011401	1	油量指示窗	OIL LNDICATION WINDOW
15	150011501	4	机座支柱	MACHINE MOUNTING SCREW
16	150011601	1	底罩板	BED HOOK PLATE
17	150011701	2	螺钉 M4×10	SCREW PAN M4×10

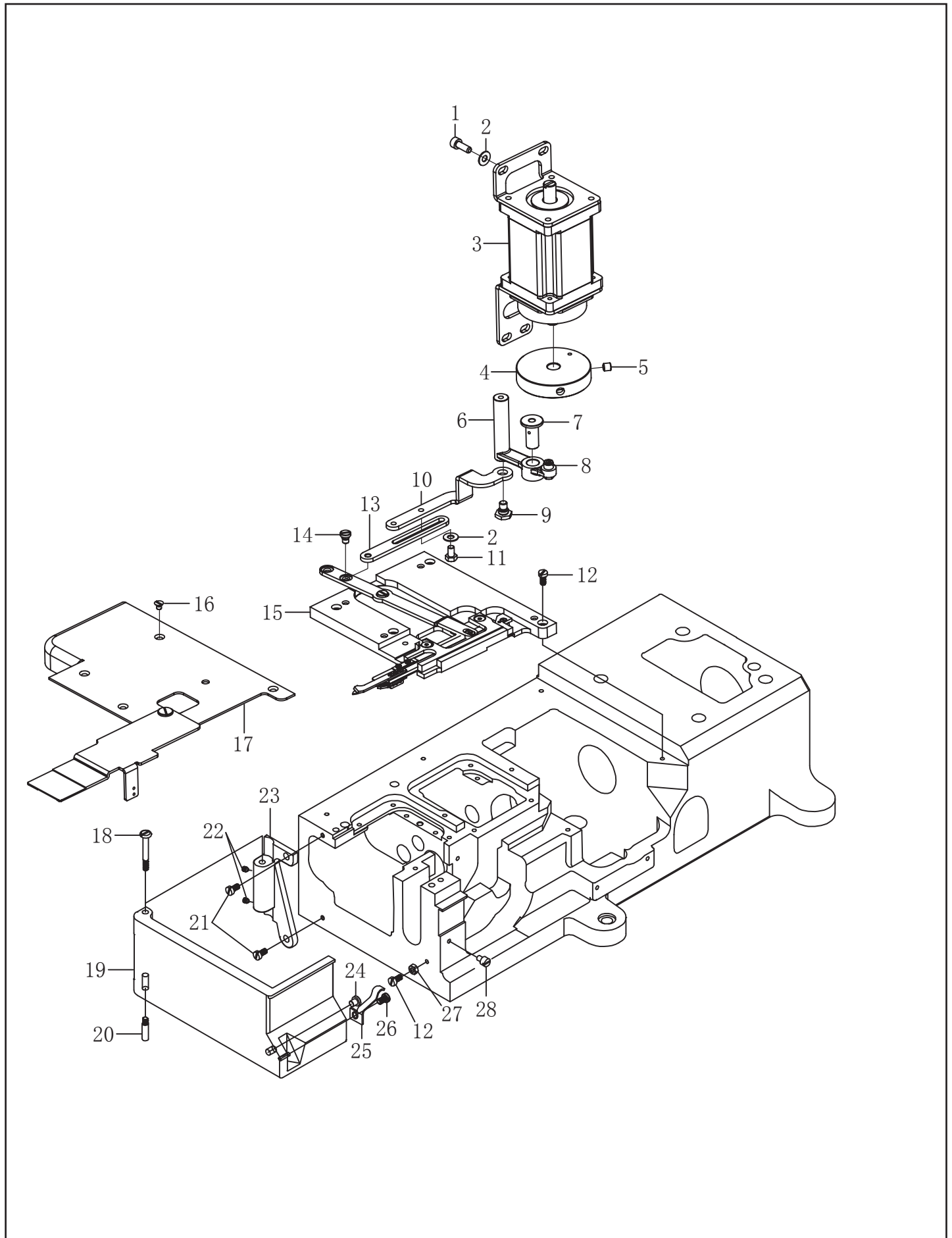
2.罩壳部分/Cover Assemblies



2. 罩壳部分/Cover Assemblies

序号	图号	数量	名称	NAME OF PARTS
1	150010101	5	螺钉M4×7	SCREW PAN M4×7
2	025040236	2	垫片 M4	WASHER M4
3	168111701	1	防护罩座	SHIELD SEAT
4	188021001	1	防护罩铰链螺钉	SCREW PAN
5	188021101	1	波形垫片	WAVE WASHER
6	168111601	1	防护罩支架	SHIELD BRAVKET
7	168111801	1	防护罩	SHIELD
8	062300516	2	螺钉M3×5	SCREW PAN M3×5
9	150020901	1	面板油封螺钉	SCREW PAN
10	150021001	1	面板密封圈 $\phi 12.5 \times 1$	O RING $\phi 12.5 \times 1$
11	150021101	11	上盖螺钉	SCREW PAN
12	150021201	1	面板	FACE COVER
13	150021301	1	面板密封垫	FACE COVER GASKET
14	150021401	1	上挑线座罩	THREAD TAKE-UP LEVER GUARD
15	150021501	1	上盖密封垫	UPPER COVER GASKET
16	150021601	1	橡皮塞 $\phi 36.7 \times 12.2$	RUBBER CAP $\phi 36.7 \times 12.2$
17	150021701	1	O型圈	O RING
18	150021801	1	油窗	OIL SIGHT WINDOW
19	150021901	1	上盖	UPPER COVER
20	018502032	2	螺钉M5×20	SCREW PAN M5×20
21	150164501	1	电控组件	ELECTRIC CONTROL UNIT
22	150022201	1	过线架	THREAD EYELET STAND
23	150022301	1	过线连接柱	THREAD HANDLER LINK
24	150022401	1	过线板	THREAD GUIDE PLATE
25	150022501	1	穿线板	WIRE ROD
26	150022601	2	防震塞	RUBBER CAP
27	150022701	1	穿线罩板	THREAD GUIDE PLATE
28	150022801	1	穿线罩销轴	THREADING COVER PIN
29	150022901	2	螺钉M4×14	SCREW PAN M4×14
30	018503032	2	螺钉M5×30	SCREW PAN M5×30

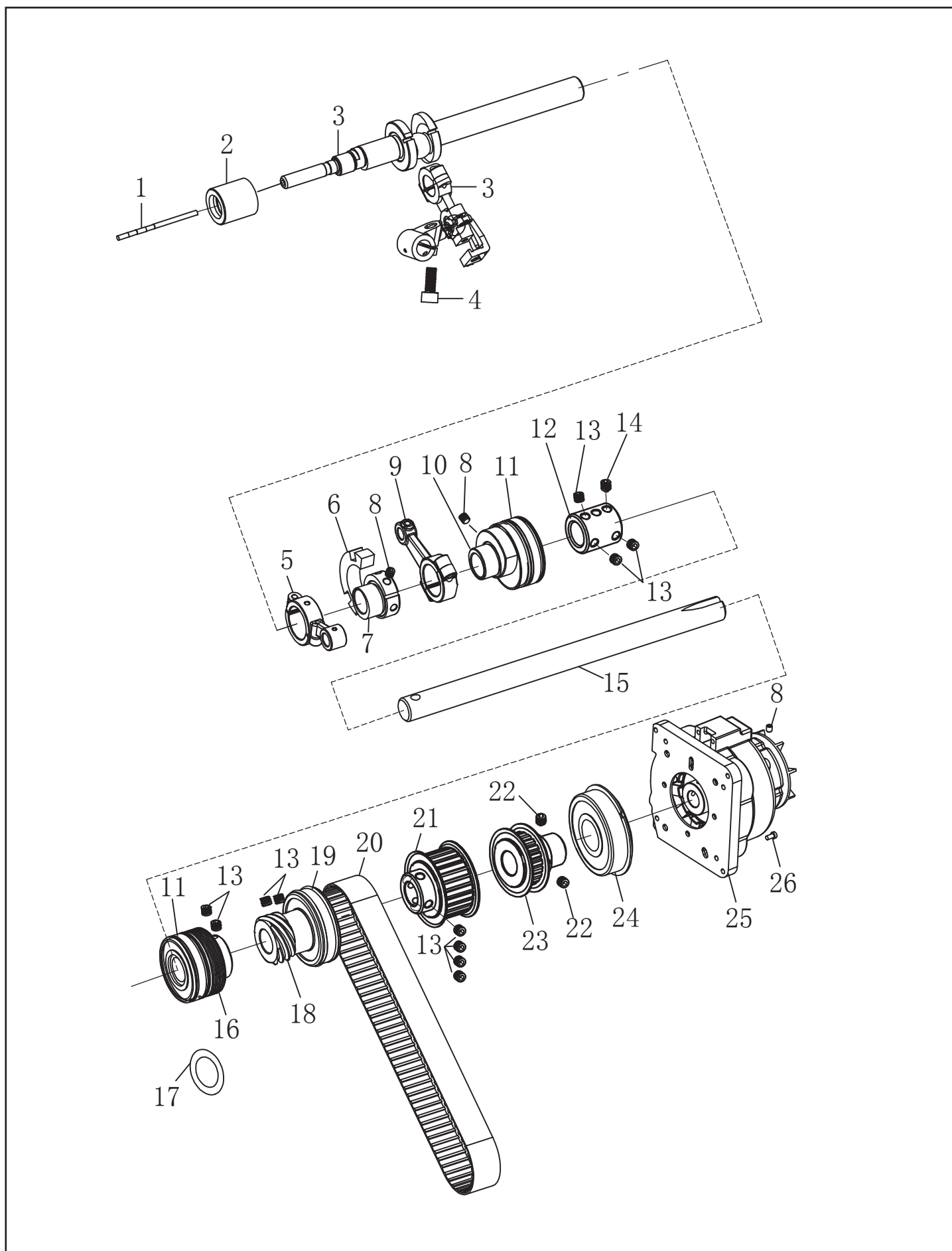
3.缝台部分/Cloth Plate Assemblies



3. 缝台部分/Cloth Plate Assemblies

序号	图号	数量	名称	NAME OF PARTS
1	018501232	4	螺钉M5×12	SCREW PAN M5×12
2	025050132	6	垫片 M5	WASHER M5
3	150164301	1	电机组件	MOTOR
4	178164401	1	切线凸轮	THREAD TRIMMER CAM
5	012061032	2	螺钉M6×10	SCREW PAN M6×10
6	150164101	1	切线驱动杆	TANGENTIAL DRIVE ROD
7	178164502	1	销	PIN
8	103050401	1	滚珠	BALL
9	115033701	1	轴位螺钉SM5.95	SCREW PAN SM5.95
10	150164201	1	切线拉杆R	THE TANGENT ROD R
11	017500812	2	螺钉M5×8	SCREW PAN M5×8
12	150031201	5	螺钉M4×10	SCREW PAN M4×10
13	150164001	1	切线拉杆L	THE TANGENT ROD L
14	150031401	1	轴位螺钉M5	SCREW PAN M5
15	150200101	1	下剪线组件	CUT WIRE ASSY
16	150200201-4	4	螺钉M4×5	SCREW PAN M4×5
17	150200201	1	下切刀盖板组件	LOWER CUTTER COVER PLATE
18	150031801	1	罩板轴1	SHAFTS 1
19	150031901	1	侧盖	FRONTAL MANTLE
20	150032001	1	罩板轴2	SHAFTS 2
21	150022101	2	螺钉M4×12	SCREW PAN M4×12
22	014500532	2	螺钉M5×5	SCREW PAN M5×5
23	150032301	1	前罩铰链板	HINGE BOARD
24	150022601	1	防震垫(厚)	RUBBER CAP
25	150032501	1	前罩板弹簧	SPRING
26	150010101	1	螺钉M4×7	SCREW PAN M4×7
27	021400312	1	螺母 M4	NUT M4
28	150032801	1	前罩板定位螺钉	SCREW PAN

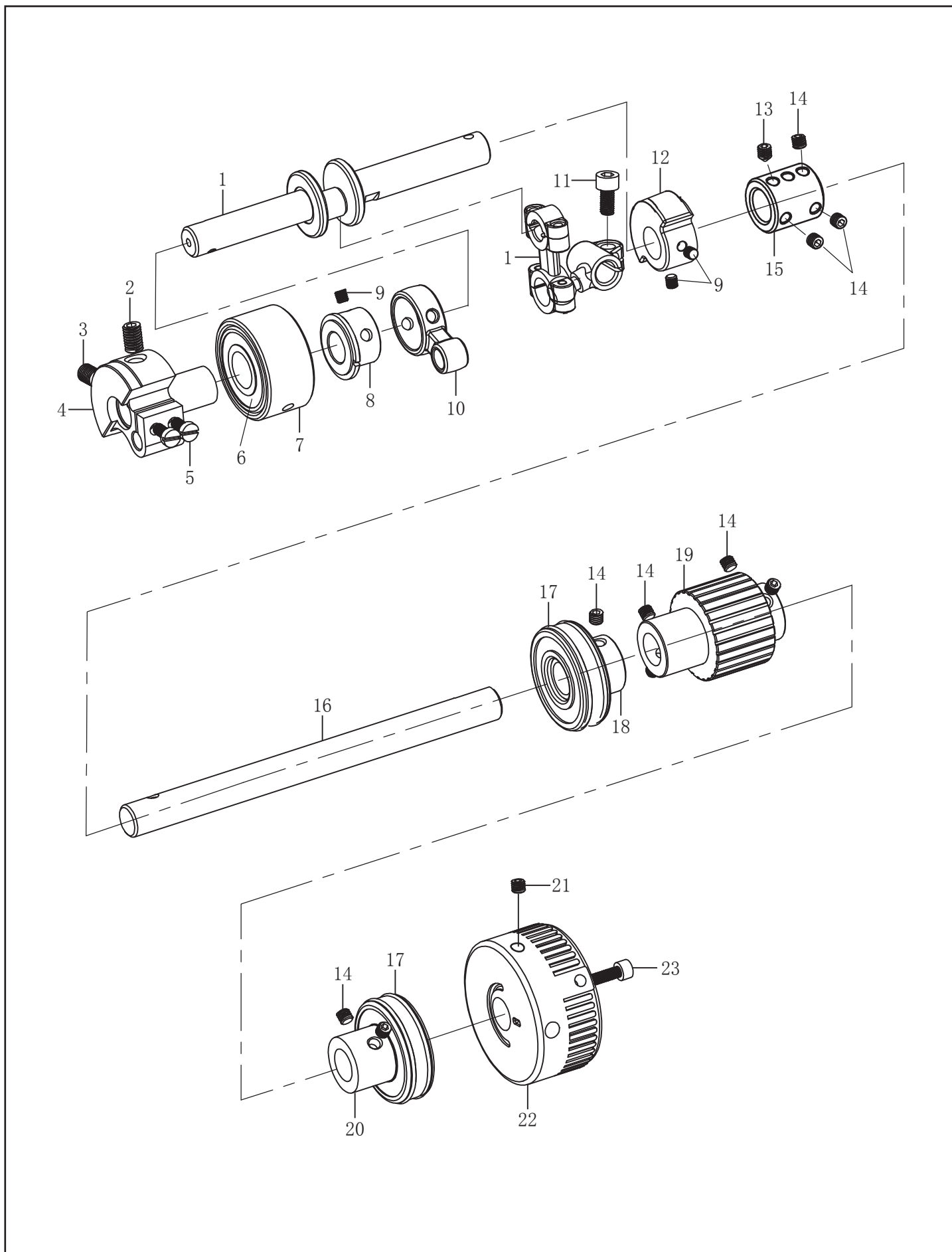
4. 下轴部分/Hook Shaft Assemblies



4. 下轴部分/Hook Shaft Assemblies

序号	图号	数量	名称	NAME OF PARTS
1	150040101	1	下轴油量调节芯针	OIL FLOW REGULATING NEEDLE
2	150040201	1	下轴前套	LOWER SHAFT FRONT BUSHINGS
3	150040301	1	下轴前节组件	LOWER SHAFT FOREPART ASSY
4	150040401	1	螺钉M6×0.75-15	SCREW PAN M6×0.75-15
5	150040501	1	弯针连杆组件	LOOPER LINK LEVER ASSY
6	150040601	1	平衡块(下)	LOWER BALANCE BLOCK
7	150040701	1	偏心凸轮	ECCENTRICITY CAM
8	014500832	6	螺钉M5×8	SCREW PAN M5×8
9	150040901	1	保针连杆	NEEDLE GUARD CONNECTING ROD
10	150041001	1	下轴前衬套	FRONT AXLE BUSHING
11	150041101	2	轴承6004RS	BEARING 6004RS
12	150041201	1	联轴器	LINK BEARING
13	014600532	11	螺钉M6×0.75-5	SCREW PAN M6×0.75-5
14	016600632	1	螺钉M6×0.75-6	SCREW PAN M6×0.75-6
15	150052101	1	下轴后节	LOWER SHAFT LOOP
16	150041601	1	下轴中轴承套	LOWER SHAFT CENTRE BUSH
17	150041701	4	O型圈	O RING
18	150041801	1	下轴蜗杆	OIL PUPM WORM
19	150041901	1	轴承6204RS	BEARING 6204RS
20	150042001	1	同步带	BELT
21	150042101	1	主动时规轮	DRIVING WHEEL
22	012400532	2	螺钉M4×5	SCREW PAN M4×5
23	150042301	1	同步轮	DRIVING WHEEL
24	150042401	1	轴承6304-2RZ	BEARING 6304-2RZ
25	150164401	1	主轴电机组件	MOTOR ASSY
26	150042601	4	螺钉M5×16	SCREW PAN M5×16

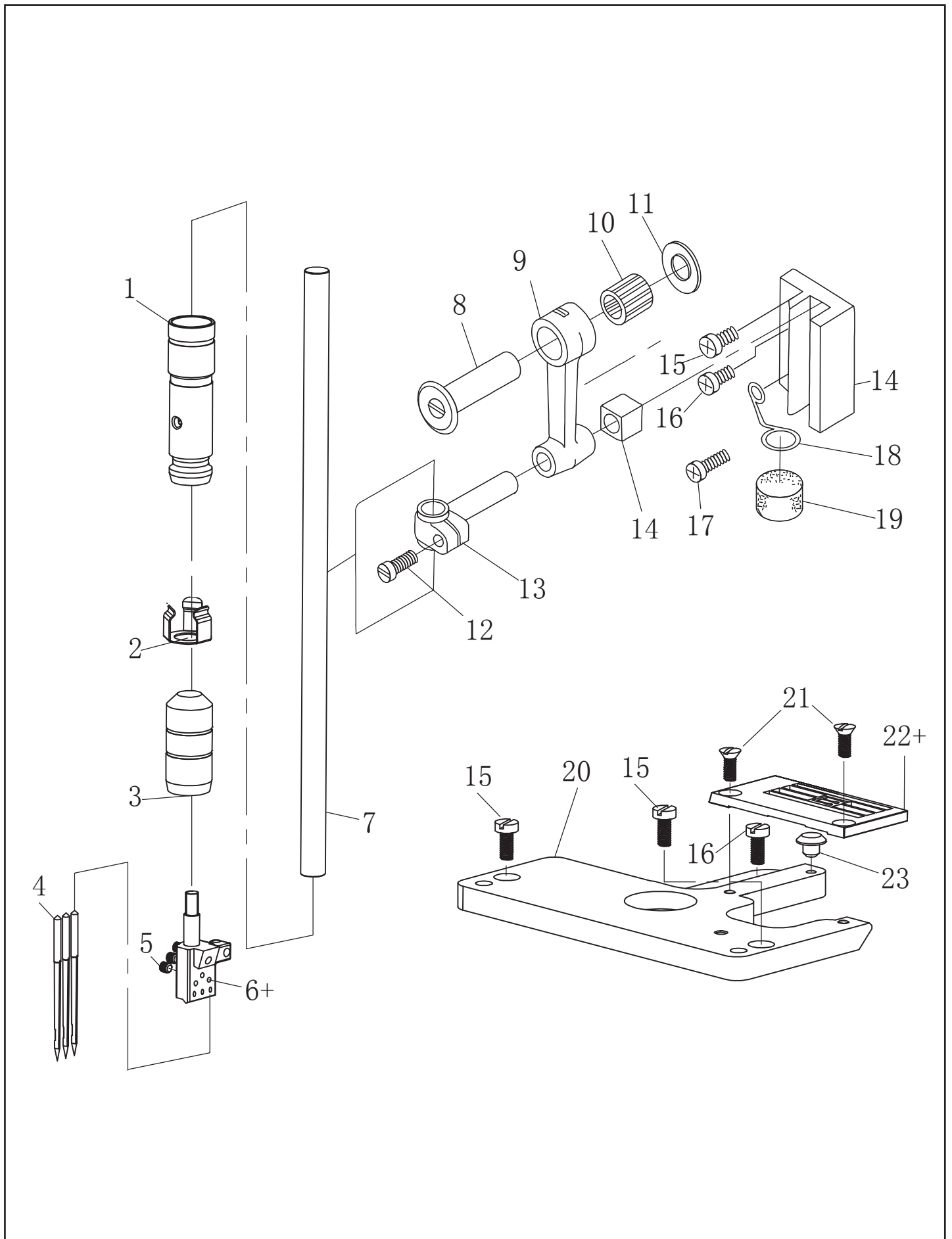
5.上轴部分/Main Shaft Assemblies



5. 上轴部分/Main Shaft Assemblies

序号	图号	数量	名称	NAME OF PARTS
1	150050101	1	上轴前节	MAIN SHAFT FOREPART
2	014080832	1	螺钉M8×8	SCREW PAN M8×8
3	150050301	1	定位螺钉	SCREW PAN
4	150050401	1	针杆曲柄	NEEDLE BAR CRANK
5	150050501	2	螺钉M5×10	SCREW PAN M5×10
6	150050601	2	轴承6203RS	BEARING 6203RS
7	150050701	1	轴承套	BEARING SLEEVE
8	150050801	1	绷针凸轮	STRETCH TIGHT NEEDLE CAM
9	012500532	4	螺钉M5×5	SCREW PAN M5×5
10	150051001	1	绷针连杆	STRETCH TIGHT NEEDLE LINK
11	150051101	1	螺钉M6×0.75-12	SCREW PAN M6×0.75-12
12	150051201	1	平衡块（上）	UPPER BALANCE BLOCK
13	016600632	1	螺钉M6×0.75-6	SCREW PAN M6×0.75-6
14	014600532	11	螺钉M6×0.75-5	SCREW PAN M6×0.75-5
15	150041201	1	联轴器	LINK BEARING
16	150062301	1	上轴后节	MAIN SHAFT BACKSIDE
17	150041901	2	轴承6204RS	BEARING 6204RS
18	150051801	1	轴承套	BEARING SLEEVE
19	150051901	1	从动时规轮	FOLLOWER WHEEL
20	150052001	1	轴承套	BEARING SLEEVE
21	012060832	2	螺钉M6×8	SCREW PAN M6×8
22	150052201	1	上轮	BELT WHEEL
23	018501232	1	螺钉M5×12	SCREW PAN M5×12

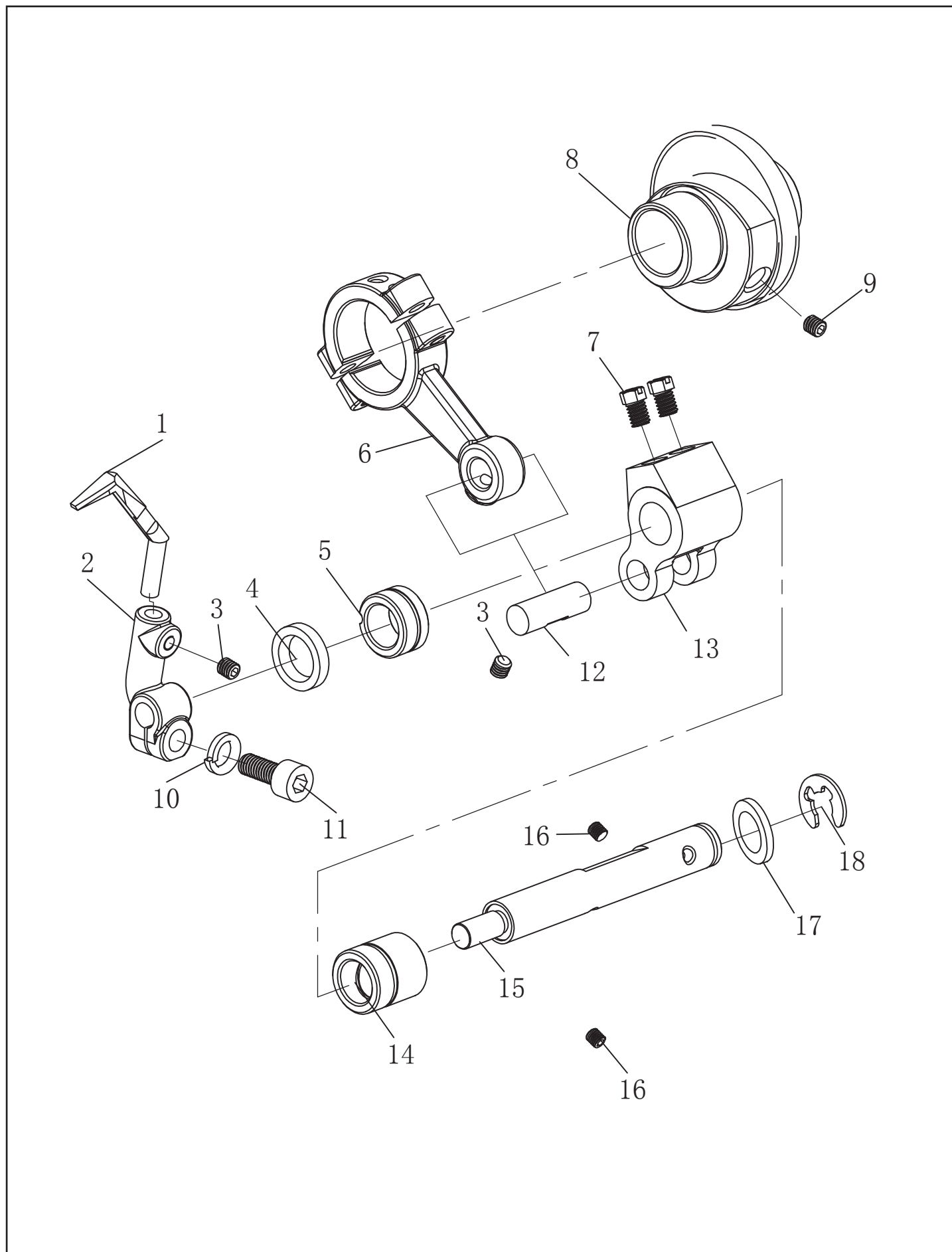
6.针杆部分/Main Shaft Assemblies



6. 针杆部分/Main Shaft Assemblies

序号	图号	数量	名称	NAME OF PARTS
1	150060101	1	针杆上套	NEEDLE BAR UPPER BUSH
2	150060201	1	油线夹	OIL WICK HOLDER
3	150060301	1	针杆下套	NEEDLE BAR LOWER BUSH
4	150060401	3	机针	NEEDLE
5	014300432	3	螺钉M3×4	SCREW PAN M3×4
6+	150060601	1	针夹(5.6)	NEEDLE HOLDER 5.6
6+	150060602	1	针夹(6.4)	NEEDLE HOLDER 6.4
6+	150060603	1	针夹(4.8)	NEEDLE HOLDER 4.8
7	150060701	1	针杆	NEEDLE BAR
8	150060801	1	针杆连接销	NEEDLE BAR LINK LEVER
9	150060901	1	针杆连杆	OIL FELT
10	150061001	1	滚针轴承	NEEDLE BEARING
11	150061101	1	针杆连杆垫片	WASHER
12	150061201	1	螺钉SM4.37×40-10	SCREW PAN SM4.37×40-10
13	150061301	1	针杆接头	NEEDLE BAR CONNECTING PIN
14	150061401	1	针杆滑块座组件	NEEDLE BAR CONNECTING POLE
15	150011701	3	螺钉M4×10	SCREW PAN M4×10
16	150010101	2	螺钉M4×7	SCREW PAN M4×7
17	150022101	1	螺钉M4×12	SCREW PAN M4×12
18	150061801	1	油毡定位圈	OIL FELT POSITION LOOP
19	150061901	1	油毡	FELT
20	150062001	1	针板接板	NEEDLE PLATE LINK PLATE
21	150062101	2	针板螺钉M3.5	CREW PAN M3.5
22+	150062201	1	针板(5.6)	NEEDLE PLATE
22+	150062202	1	针板(6.4)	NEEDLE PLATE
22+	150062203	1	针板(4.8)	NEEDLE PLATE
22+	150062204	1	针板(-02 5.6)	NEEDLE PLATE
22+	150062205	1	针板(-01 大孔6.4)	NEEDLE PLATE
23	150062401	1	防震塞	RUBBER CAP

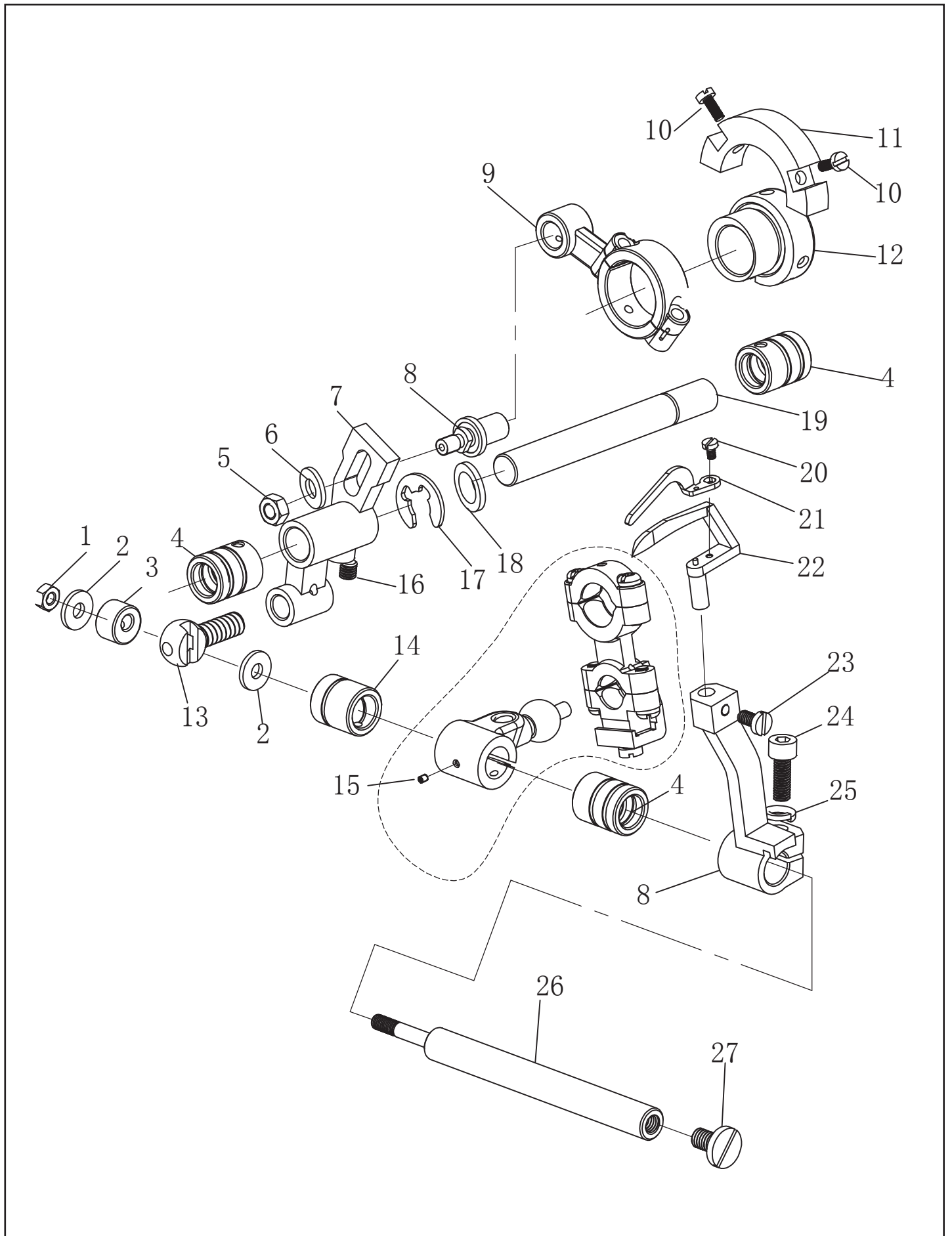
7.护针部分/Needle Guard Assemblies



7. 护针部分/Needle Guard Assemblies

序号	图号	数量	名称	NAME OF PARTS
1	150070101	1	后保针	REAR NEEDLE GUARD
2	150070201	1	保针座	NEEDLE GUARD BASE
3	012400532	2	螺钉M4×5	SCREW PAN M4×5
4	150070401	1	骨架防油圈	FRAMEWORK OIL SHIELD
5	150070501	1	轴套	NEEDLE GUARD SHAFT BUSH
6	150070601	1	保针曲柄	NEEDLE GUARD CRANK
7	150070701	2	螺钉SM4. 37×40	SCREW PAN SM4. 37×40
8	150070801	1	下针前衬套组件	FRONT AXLE BUSHING ASSY
9	014500832	2	螺钉M5×8	SCREW PAN M5×8
10	028050246	1	垫圈T5	WASHER
11	018501232	1	螺钉M5×12	SCREW PAN M5×12
12	150071201	1	保针曲柄销	NEEDLE GUARD CRANK PIN
13	150071301	1	保针曲柄	NEEDLE GUARD CRANK
14	150071401	1	保针轴右套	NEEDLE GUARD SHAFT BUSH
15	150071501	1	保针轴	NEEDLE GUARD SHAFT
16	014500632	2	螺钉M5×6	SCREW PAN M5×6
17	150071701	1	垫圈	WASHER
18	150071801	1	开口挡圈	RING

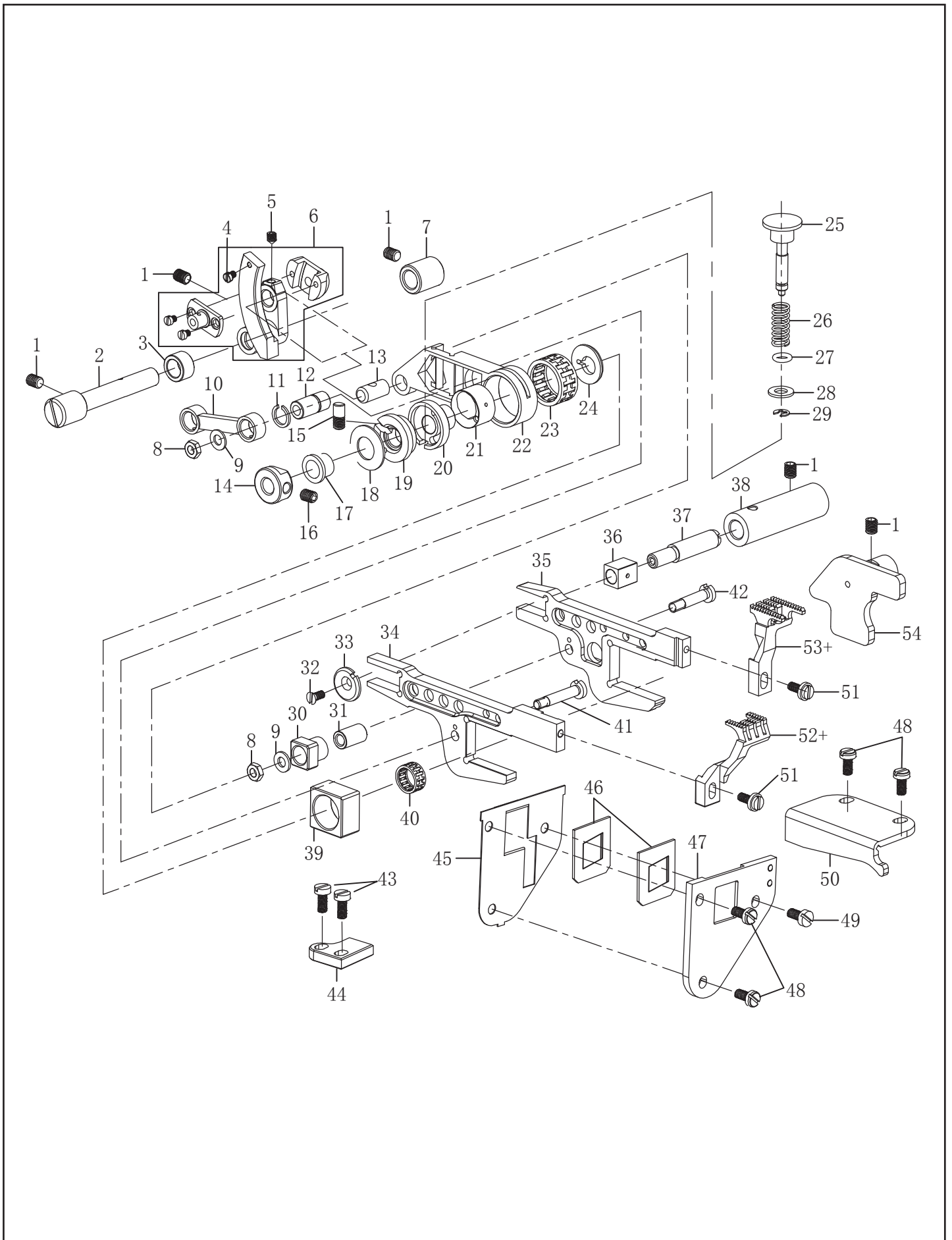
8.弯针部分/Looper Assemblies



8. 弯针部分/Looper Assemblies

序号	图号	数量	名称	NAME OF PARTS
1	115010701	1	螺母	RUBBER CAP 15.5
2	150080201	2	垫片	WASHER
3	150080301	1	偏心紧圈	ECCENTRICITY THRUST RING
4	150080401	3	轴套	SHAFT SLEEVE
5	021500106	1	螺母M5	NUT M5
6	150080601	1	垫片	WASHER
7	150080701	1	调节摆杆	REGULATOR DRIVING BAR
8	150080801	1	弯针调节柱	LOOPER REGULATOR POLE
9	150040501	1	弯针连杆组件	LOOPER LINK LEVER ASSY
10	150081001	2	平衡块螺钉M3×7.5	SCREW PAN M3×7.5
11	150040601	1	平衡块(下)	LOWER BALANCE BLOCK
12	150040701	1	偏心凸轮	ECCENTRICITY CAM
13	150081301	1	接头	CONNECTING POLE
14	150081401	1	弯针轴套	LOOPER SHAFT BUSH
15	016300432	1	螺钉M3×4	SCREW PAN M3×4
16	014500532	1	螺钉M5×5	SCREW PAN M5×5
17	048100342	1	开口挡圈E10	SNAP RING E10
18	025100132	1	垫片	WASHER
19	150081901	1	弯针调节摆轴	LOOPER REGULATE SHAFT
20	150082001	1	螺钉SM2.38×56-4	SCREW PAN SM2.38×56-4
21	150082101	1	前保针	FRONT NEEDLE GUARD
22	150082201	1	弯针	LOOPER
23	150082301	1	螺钉M4×6	SCREW PAN M4×6
24	018501432	1	螺钉M5×14	SCREW PAN M5×14
25	028050246	1	弹性垫圈T5	WASHER
26	150082601	1	弯针轴	LOOPER SHAFT
27	150082701	1	弯针轴螺钉	SCREW PAN

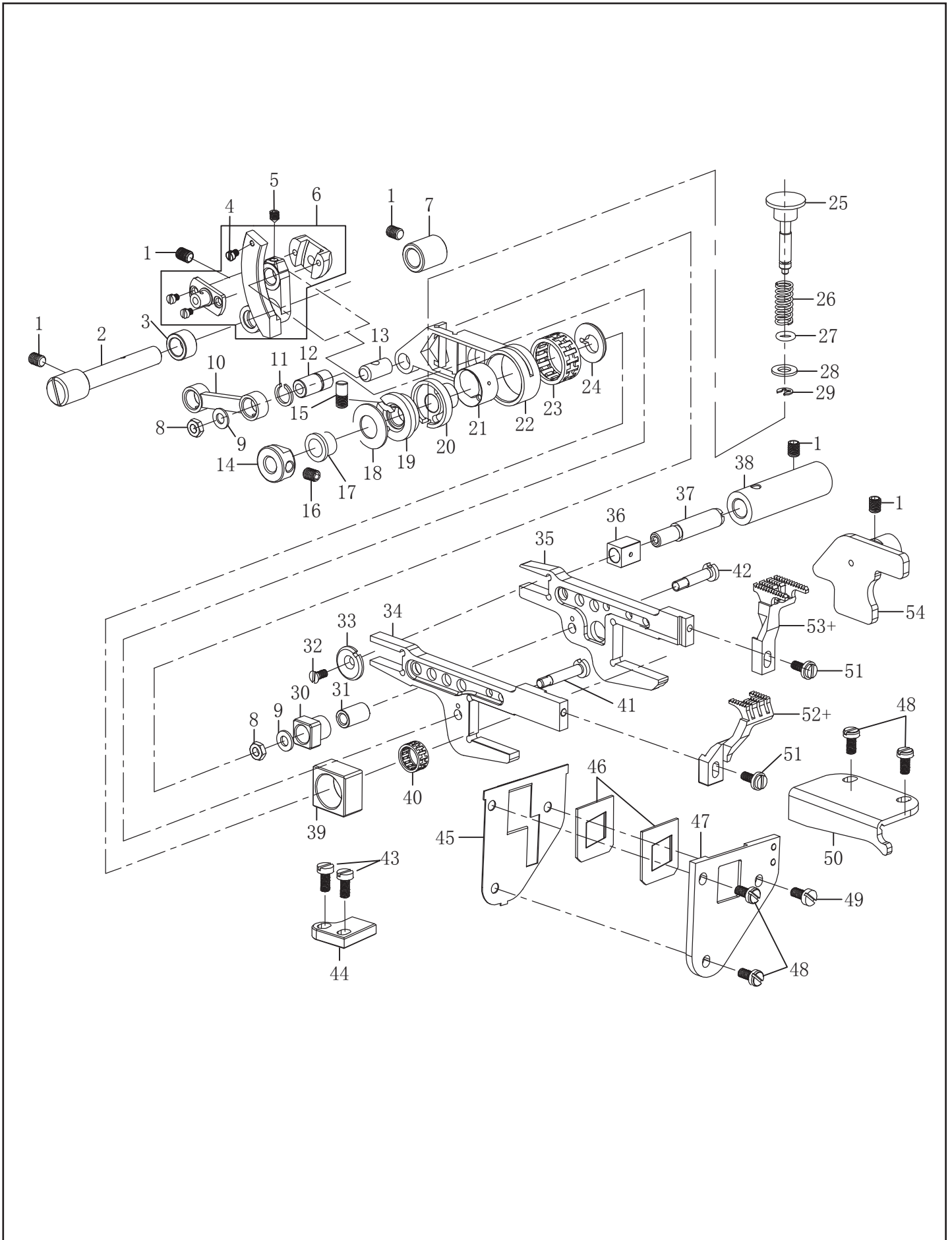
9.送布部分/Main Feed Mechanism Components



9. 送布部分/Main feed Assemblies Components

序号	图号	数量	名称	NAME OF PARTS
1	014500632	5	螺钉M5×6	SCREW PAN M5×6
2	150090201	1	差动器轴	DIFFERENTIAL FEED SHAFT
3	150090301	1	差动器隔套	DIFFERENTIAL FEED SPACER
4	150090401	2	螺钉	SCREW PAN
5	150090501	1	螺钉M4×5	SCREW PAN M4×5
6	150090601	1	差动器组件	DIFFERENTIAL FEED ASSY
7	150090701	1	差动器轴套	DIFFERENTIAL FEED BUSH
8	115111601	2	螺母SM4.37	NUT SM4.37
9	025040132	2	垫片	WASHER
10	150091001	1	差动送布连杆	DIFFERENTIAL FEED LINK
11	048080142	1	卡簧C8	RING C8
12	150091201	1	送布连杆销	FEED DOG LINK LEVER PIN
13	150091301	1	送布连杆销	FEED DOG LINK LEVER PIN
14	150091401	1	凸轮螺母	NUT
15	150091501	1	销螺钉	PIN SCREW
16	014500532	1	螺钉M5×5	SCREW PAN M5×5
17	150091701	1	凸轮	LADDER BUSH
18	150091801	5	蝶型弹簧圈	WASHER
19	150091901	1	针距调节套	NEEDLE DISTANCE REGULATOR
20	150092001	1	送布调节凸轮	FEED DOG REGULATOR CAM
21	150092101	1	凸轮	LADDER BUSH
22	150092201	1	送布连杆	FEED DOG LINK LEVER
23	150092301	1	滚针轴承	NEEDLE BEARING
24	150092401	1	送布连杆垫圈	WASHER
25	150092501	1	针距按钮	NEEDLE DISTANCE BUTTON
26	150092601	1	针距按钮簧	SPRING
27	081004870	1	O型圈	O-RING
28	150092801	2	垫圈	WASHER
29	048050342	1	卡簧E5	RING E5
30	150093001	1	送布滑块	FEED DOG SLIDE BLOCK
31	150093101	1	送布滑块套	FEED DOG SLIDE BLOCK BUSH
32	150093201	1	螺钉	SCREW PAN
33	150093301	1	偏心垫圈	WASHER

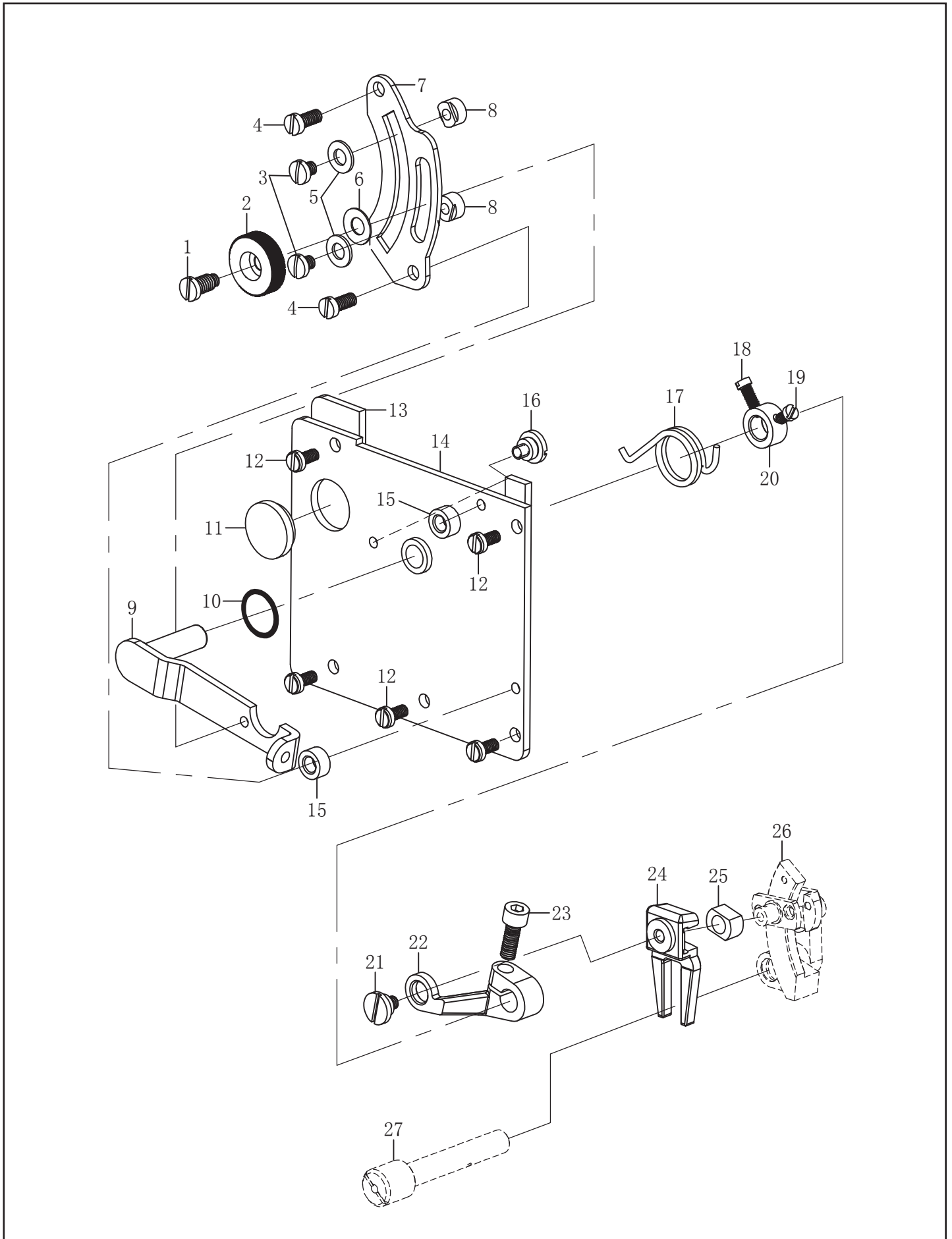
9.送布部分/Main Feed Mechanism Components



9. 送布部分/Main feed Assemblies Components

序号	图号	数量	名称	NAME OF PARTS
34	150093401	1	差动牙架	DIFFERENTIALFEED RACK
35	150093501	1	送布牙架	FEED DOG RACK
36	150093601	1	牙架后滑块	FEED DOG RACK SLIDE BLOCK
37	150093701	1	牙架偏心轴	ECCENTRIC SHAFT
38	150093801	1	偏心轴套	ECCENTRIC BUSH
39	150093901	1	牙架前滑块	FEED RACK SLIDE BLOCK
40	150094001	1	滚针轴承	NEEDLE BEARING
41	150094101	1	连接螺钉	CONNECTION SCREW
42	150094201	1	送布滑块连接螺钉	CONNECTION SCREW
43	150011701	2	螺钉M4×10	SCREW PAN M4×10
44	150094401	1	左限位板	LEFT STOPPER PLATE
45	150094501	1	垫板	WASHER
46	150094601	2	胶垫片	RUBBER WASHER
47	150094701	1	弯针盖	LOOPER COVER
48	150010101	4	螺钉M4×7	SCREW PAN M4×7
49	150094901	1	螺钉M4×8	SCREW PAN M4×8
50	150095001	1	牙架上限位板	UPPER STOPPER PLATE
51	150095101	2	螺钉	SCREW PAN
52+	150095201	1	差动送布牙 (5.6)	FEED DOG (5.6)
52+	150095202	1	差动送布牙	FEED DOG
52+	150095203	1	差动送布牙 (4.8)	FEED DOG (4.8)
53+	150095301	1	主动送布牙 (5.6)	MAIN FEED DOG (5.6)
53+	150095302	1	主动送布牙	MAIN FEED DOG
53+	150095303	1	主动送布牙 (4.8)	MAIN FEED DOG (4.8)
54	150095401	1	牙架右限位板	FEED RACK STOPPER PLATE

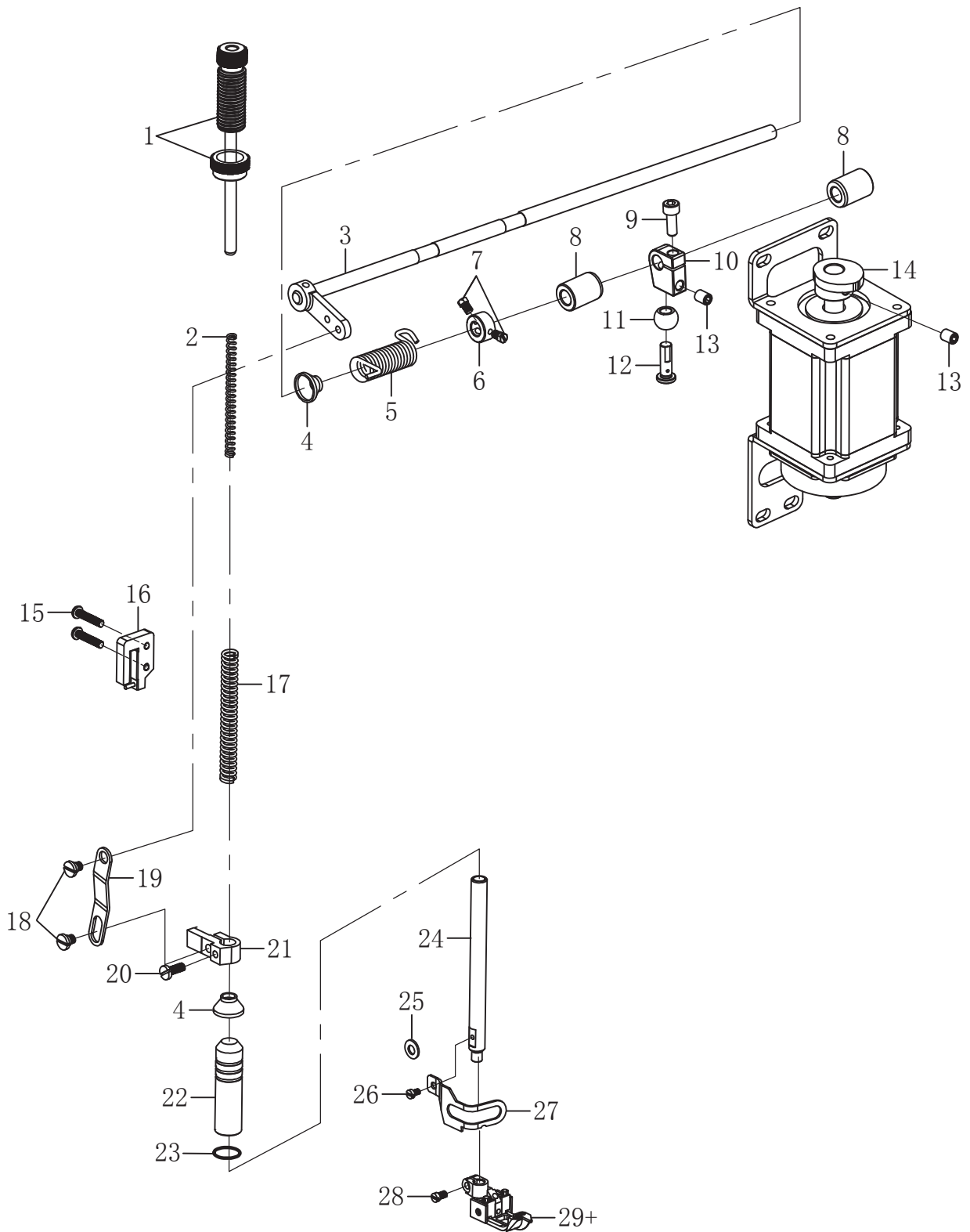
10.差动部分/Differential Assemblies



10. 差动部分/Differential Assemblies

序号	图号	数量	名称	NAME OF PARTS
1	150100101	1	锁紧螺钉	SCREW PAN
2	150100201	1	差动调节锁紧螺母	NUT
3	150100301	2	螺钉	SCREW PAN
4	150061201	2	螺钉SM4. 37×40-10	SCREW PAN SM4. 37×40-10
5	025040132	2	平垫圈	WASHER
6	150100601	1	蝶形垫片	WAVER WASHER
7	150100701	1	差动调节刻度板	DIFFERENTIAL FEED REGULAT
8	150100801	2	螺母	NUT
9	150100901	1	调节杆组件	ADJUSTING ROD ASSY
10	150101001	1	O型圈 11.8×1.9	O RING 11.8×1.9
11	150101101	1	橡皮塞	RUBBER CAP
12	150094901	5	螺钉M4×8	SCREW PAN M4×8
13	150101301	1	差动调节板垫	ADJUSTING PLATE PAD
14	150101401	1	差动调节板	DIFFERENTIAL FEED REGULAT
15	150101501	2	圆套	GRADUATION PLATE SPACER
16	150101601	1	轴位螺钉	SCREW
17	150101701	1	差动调节复位弹簧	SPRING
18	150101801	1	螺钉	SCREW
19	115101901	1	螺钉	SCREW
20	150102001	1	差动扳手紧圈	THRUST RING
21	150102101	1	差动调节曲柄螺钉	SCREW
22	150102201	1	差动调节曲柄	REGULATING CRANK
23	018501432	1	螺钉M5×14	SCREW PAN M5×14
24	150102401	1	差动调节吊板	REGULATING FORK
25	150102501	1	滑块	SLIDE BLOCK
27	150090601	1	差动器组件	DIFFERENTIAL FEED ASSY
28	150090201	1	差动器轴	DIFFERENTIAL FEED SHAFT

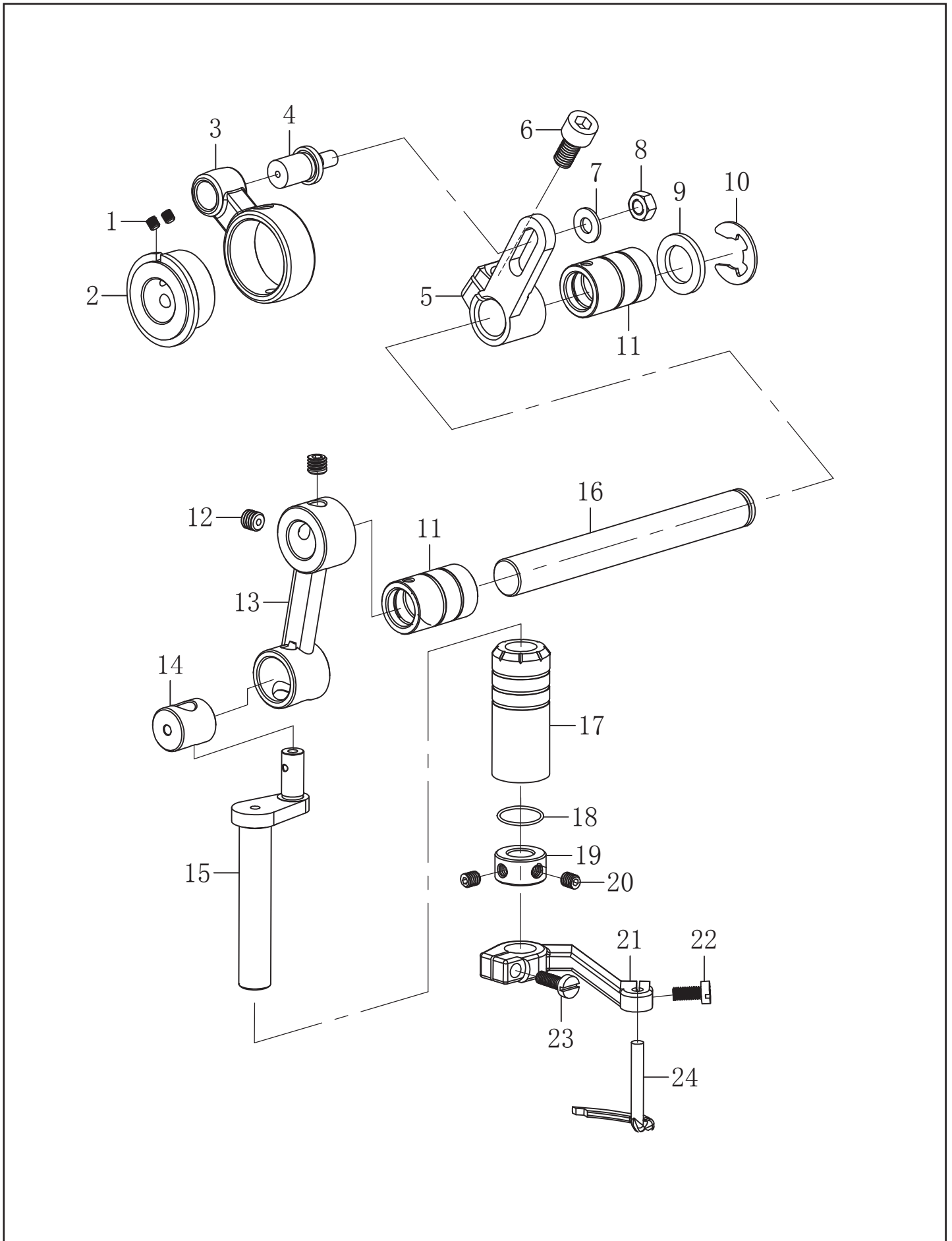
11.压脚部分/Presser Form Assemblies



11. 压脚部分/Presser Form Assemblies

序号	图号	数量	名称	NAME OF PARTS
1	150110101	1	调压螺钉组件	ADJUSTING SCREW
2	150110201	1	调压内压簧	SPRING
3	150110301	1	抬压脚轴组件	PRESSER FOOT SHAFT ASSY
4	150110401	2	挡油帽	O-RING
5	150110501	1	抬压脚弹簧	PRESSER FOOT LIFT SPRING
6	150110601	1	抬压脚轴紧圈	THRUST RING
7	150110701	2	螺钉SM11/64×40-6	SCREW PAN SM11/64×40-6
8	150110801	2	抬压脚轴套	PRESSER FOOT SHAFT SLEEVE
9	018501432	1	螺钉M5×14	SCREW PAN M5×14
10	178088501	1	中间拉柄	MIDDLE PULL HANDLE
11	178088401	1	钢球6TK	STEEL BALL 6TK
12	178085101	1	钢球支撑销	PIN
13	014060632	3	螺钉M6×6	SCREW PAN M6×6
14	178088301	1	抬压脚凸轮	PRESSER FOOT CAM
15	178111501	2	螺钉M4×20	SCREW PAN M4×20
16	150111601	1	压杆导架座	PRESSER BAR GUIDE
17	150111701	1	调压弹簧	SPRING
18	150111801	2	轴位螺钉	SCREW PAN
19	150111901	1	抬压脚吊板	PRESSER FOOT LIFT STEEVE
20	150112001	1	螺钉	SCREW PAN
21	150112101	1	压杆导架	PRESSER BAR GUIDE BRACKET
22	150112201	1	压紧杆套	PRESSER BAR BUSHING
23	150112301	1	O型圈	O-RING
24	150112401	1	压紧杆	PRESSER BAR
25	025350132	1	垫片	WASHER
26	150112601	1	螺钉M3×5	SCREW PAN M3×5
27	150112701	1	压紧杆防护罩	PRESSER BAR SHIELD
28	101062401	1	螺钉SM3.57×40-5	SCREW PAN SM3.57×40-5
29+	150112901	1	压脚组件(5.6)	PRESSER FOOT (5.6)
29+	150112902	1	压脚组件(6.4)	PRESSER FOOT (6.4)
29+	150112903	1	压脚组件(4.8)	PRESSER FOOT (4.8)

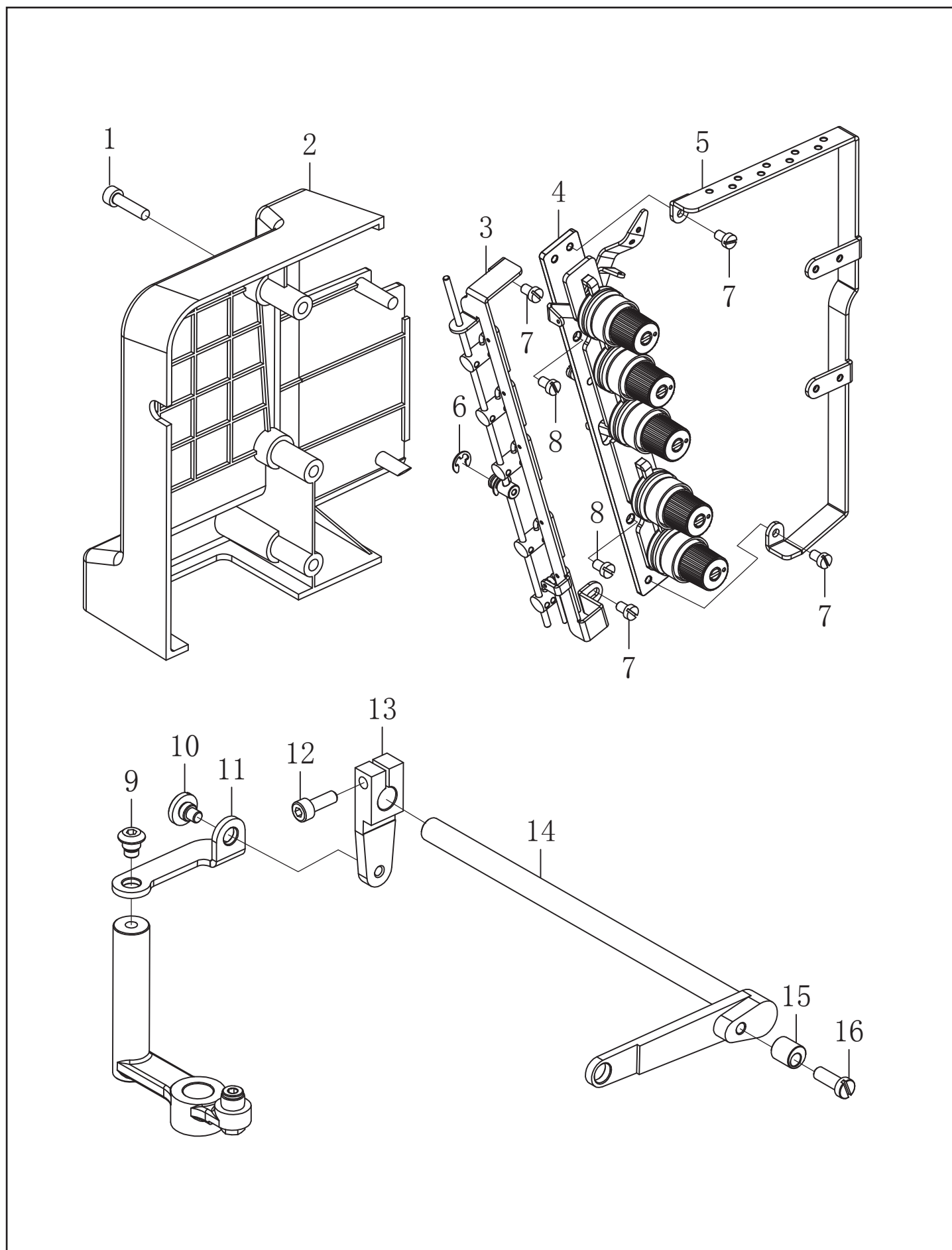
12. 喂针部分/Needle Feeding Assemblies



12. 喂针部分/Needle Feeding Assemblies

序号	图号	数量	名称	NAME OF PARTS
1	014500532	2	螺钉M5×5	SCREW PAN M5×5
2	150050801	1	绷针凸轮	STRETCH TIGHT NEEDLE CAM
3	150051001	1	绷针连杆	STRETCH TIGHT NEEDLE LINK
4	150120401	1	摆杆螺钉	OSCILLATING BAR SCREW
5	150120501	1	绷针调节摆杆	REGULATE OSCILLATING BAR
6	018601232	1	螺钉M6×0.75-12	SCREW PAN M6×0.75-12
7	025050132	1	垫圈	WASHER
8	021500106	1	螺母M5	NUT M5
9	150120901	1	垫圈	WASHER
10	048120342	1	E挡圈E12	SNAP RING E12
11	150121101	2	绷针轴套	STRETCH TIGHT NEEDLE BUSH
12	014600532	2	螺钉M6×0.75-5	SCREW PAN M6×0.75-5
13	150121301	1	绷针上摆杆	UPPER OSCILLATING BAR
14	150121401	1	绷针连接柱	CONNECTING POLE
15	150121501	1	绷针曲柄	STRETCH TIGHT NEEDLE CRANK
16	150121601	1	绷针横轴	CROSSING SHAFT
17	150121701	1	绷针竖套	UPRIGHT BUSHING
18	150121801	1	油封	OIL SEAL
19	150121901	1	绷针紧圈	THRUST RING
20	014680632	2	螺钉SM11/64×40-6	SCREW PAN SM11/64×40-6
21	150122101	1	绷针下摆杆	LOWER OSCILLATING BAR
22	150011701	1	螺钉M4×10	SCREW PAN M4×10
23	150022101	1	螺钉M4×12	SCREW PAN M4×12
24	150122401	1	绷针	STRETCH TIGHT NEEDLE
25				

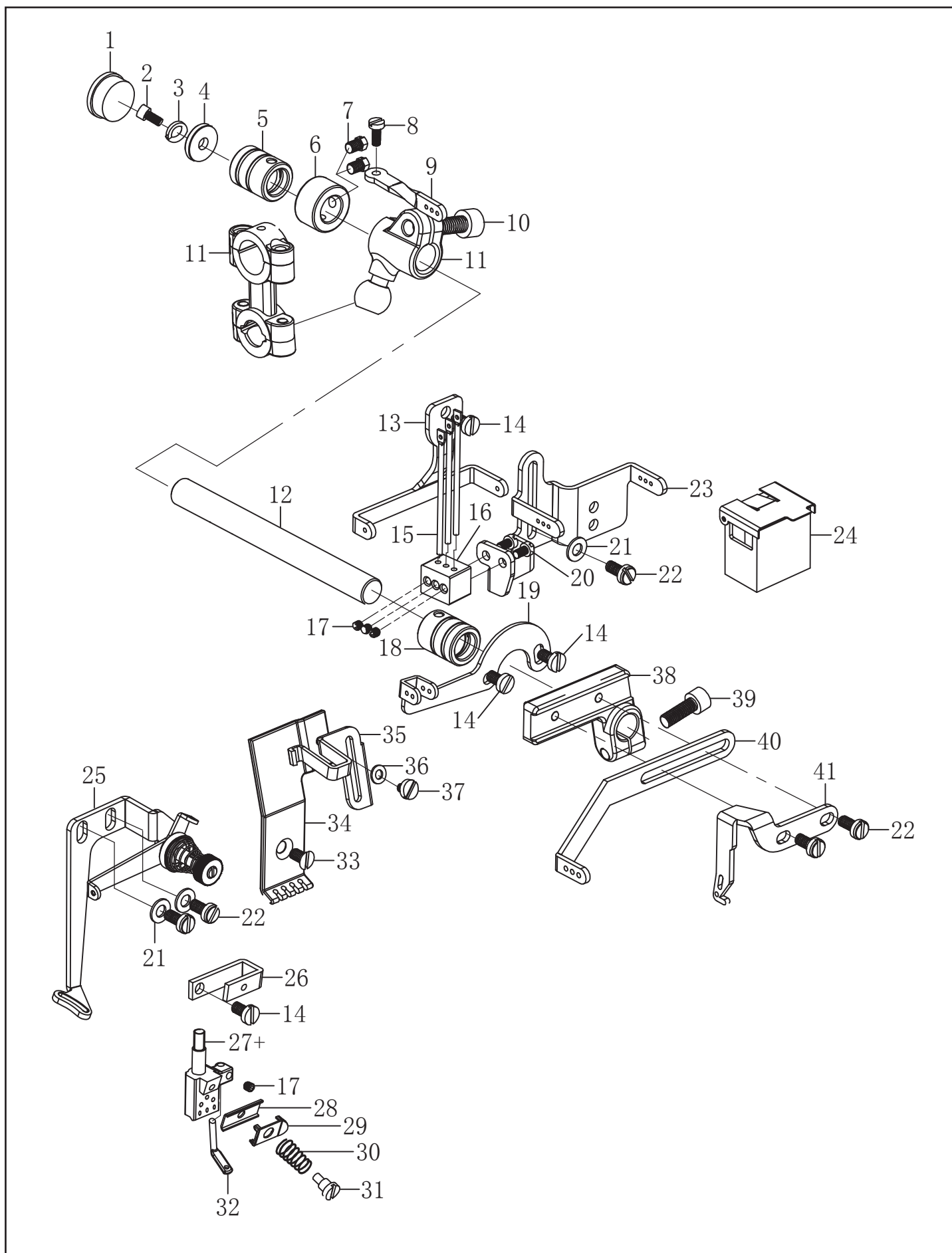
13. 松线部分/Thread Loosing Components



13. 松线部分/Thread Loosing feed Assemblies

序号	图号	数量	名称	NAME OF PARTS
1	018503032	3	螺钉M5×30	SCREW PAN M5×30
2	150012001	1	后盖	BACK COVER
3	150270101	1	松线杆组件	LOOSE ROD ASSY
4	150130401	1	夹线器组件	THREAD CLAMP DEVICE ASSY
5	150130501	1	过线架	THREAD EYELET STAND
6	048050342	1	E型卡簧E5	RING E5
7	150130701	4	螺钉M4×5	SCREW PAN M4×5
8	150094901	2	螺钉M4×8	SCREW PAN M4×8
9	115034301	1	轴位螺钉SM4.76	SCREW PAN SM4.76
10	188021001	1	轴位螺钉M4	SCREW PAN M4
11	178164201	1	松线连杆	LOOSE THREAD CONNECT ROD
12	018401436	1	螺钉M4×14	SCREW PAN M4×14
13	150270501	1	松线曲柄	LOOSE THREAD CRANK
14	150270201	1	松线轴	LOOSE THREAD SHAFT
15	150271401	1	U型松线轴套	U LOOSE LINE SHAFT SLEEVE
16	101064001	1	螺钉SM11/64×40-12	SCREW PAN SM11/64×40-12

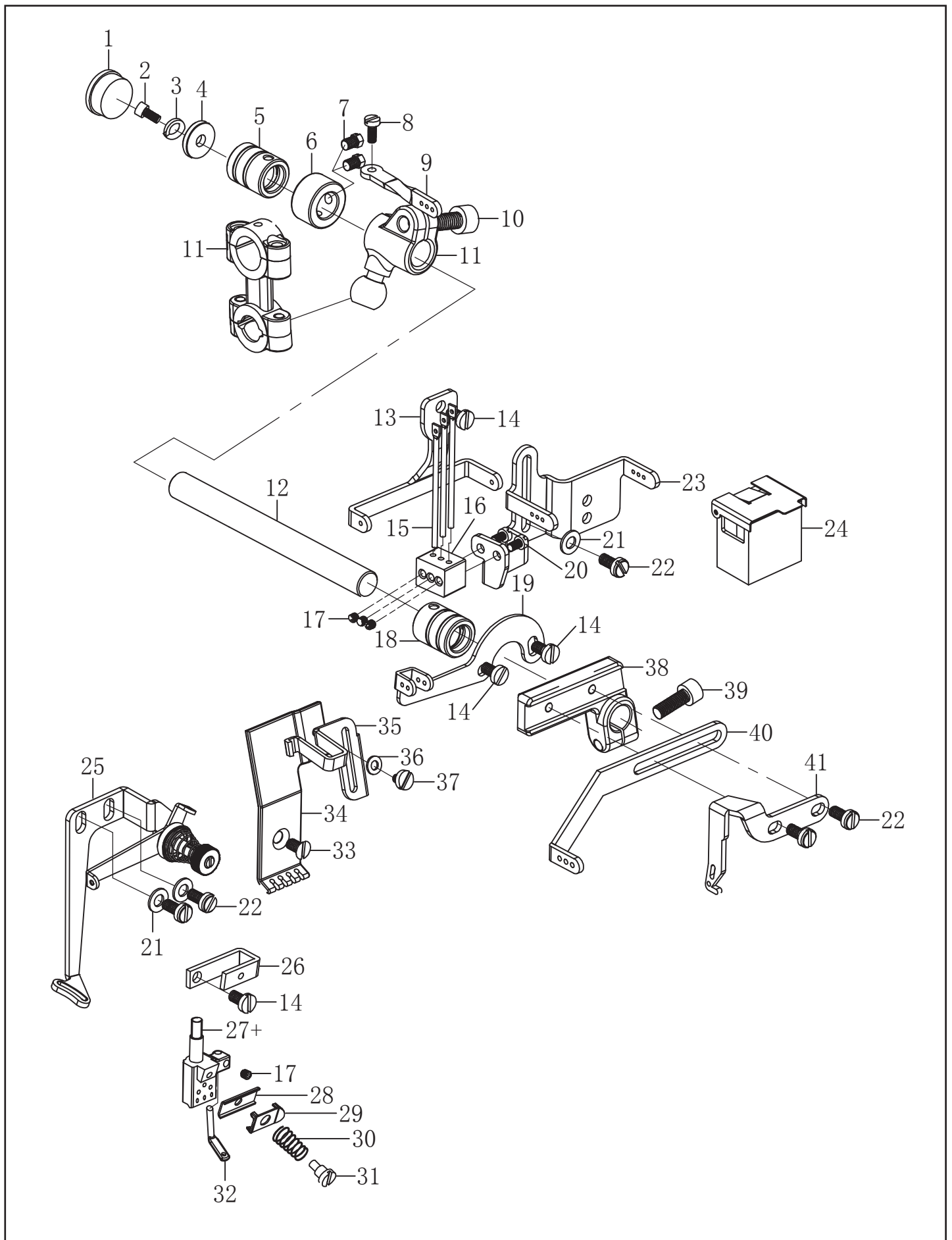
14.挑线部分/Thread Guide Assemblies



14. 挑线部分/Thread Guide Assemblies

序号	图号	数量	名称	NAME OF PARTS
1	115010701	1	橡皮塞 15.5	RUBBER CAP 15.5
2	018400832	1	螺钉M4×8	SCREW PAN M4×8
3	150140301	1	止退圈	STOPPER RING
4	150140301	1	垫片	WASHER
5	150140501	1	挑线杆轴后套	BACK BUSHING
6	150140601	1	轴承固定套	THREAD RING
7	101020201	1	螺钉SM11/64×40-6	SCREW PAN SM11/64×40-6
8	062300816	1	螺钉M3×8	SCREW PAN M3×8
9	150140901	1	绷针过线板	THREAD GUIDE PLATE
10	018601232	1	螺钉M6×0.75-12	SCREW PAN 螺钉M6×0.75-12
11	150050101-1	1	上挑线连杆组件	THREAD LINK LEVER
12	150141201	1	挑线杆轴	THREAD TAKE-UP LEVER SHAFT
13	150141301	1	绷针上导线板	UPPER THREAD GUIDE PLATE
14	150010101	4	螺钉M4×7	SCREW PAN M4×7
15	150141501	3	挑线钉	THREAD EYELET GUIDED NAIL
16	150141601	1	硅油过线座	SILICONE THREAD GUIDE BASE
17	014300342	4	螺钉M3×3	SCREW PAN M3×3
18	150141801	1	挑线杆轴前套	FRONT BUSHING
19	150141901	1	张线杆	THREAD EYELET GUIDE
20	062300516	2	螺钉M3×5	SCREW PAN M3×5
21	025040132	3	垫圈	WASHER
22	150094901	5	螺钉M4×8	SCREW PAN M4×8
23	150142301	1	上硅油盒固定架	SILICOONE OIL BOX HOLDER
24	150142401	1	上硅油盒	SILICOONE OIL BOX
25	150142501	1	绷针过线下过线板	LOWER THREAD GUIDE PLATE
26	150142601	1	小过线座	THREAD GUIDE BASE
27+	150142701	1	针夹 (5.6)	NEEDLE HOLDER 5.6
27+	150142702	1	针夹 (6.4)	NEEDLE HOLDER 6.4
27+	150142703	1	针夹 (4.8)	NEEDLE HOLDER 4.8
28	150142801	1	针轧过线	THREAD GUIDE PLATE
29	150142901	1	针轧压线	THREAD GUIDE PRESSE PLATE
30	1501430001	1	针轧过线簧	SPRING
31	150143101	1	针轧过线螺钉	SCREW PAN

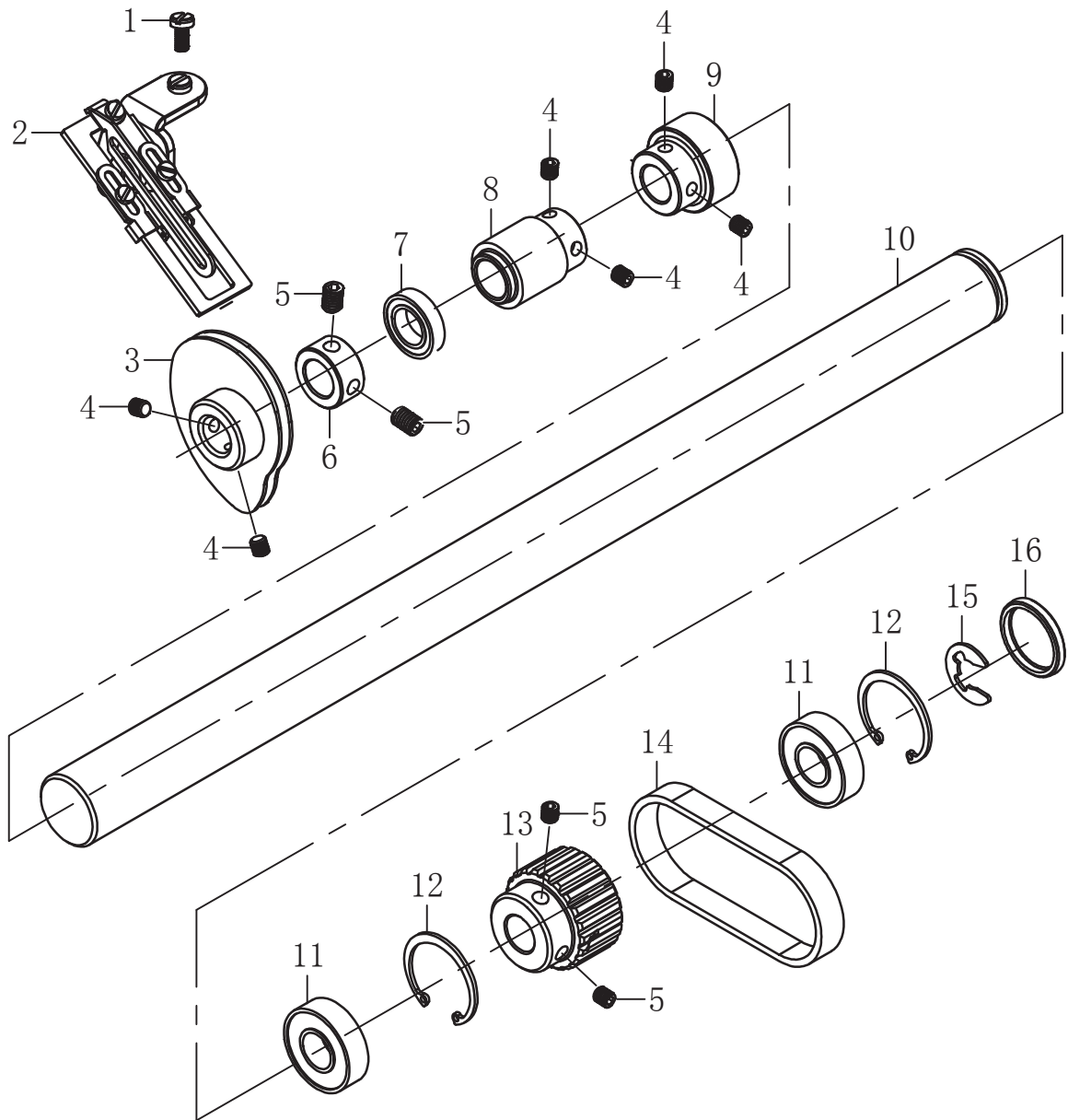
14.挑线部分/Thread Guide Assemblies



14. 挑线部分/Thread Guide Assemblies

序号	图号	数量	名称	NAME OF PARTS
32	150143201	1	针轧右过线杆	THREAD EYELET RIGHE BAR
33	150143301	1	螺钉M4×5	SCREW PAN M4×5
34	150143401	1	挑线防护罩座	THREAD TAKE-UP SHIELD BASE
35	150143501	1	过线夹2	CROSS CLIP
36	025030132	1	垫片	WASHER
37	062300416	1	螺钉M3×4	SCREW PAN M3×4
38	150143801	1	挑线杆座	THREAD TAKE-UP LEVER BASE
39	018501432	1	螺钉M5×14	SCREW PAN M5×14
40	150144001	1	挑线杆	THREAD TAKE-UP LEVER
41	150144101	1	上叉挑线杆	THREAD TAKE-UP LEVER

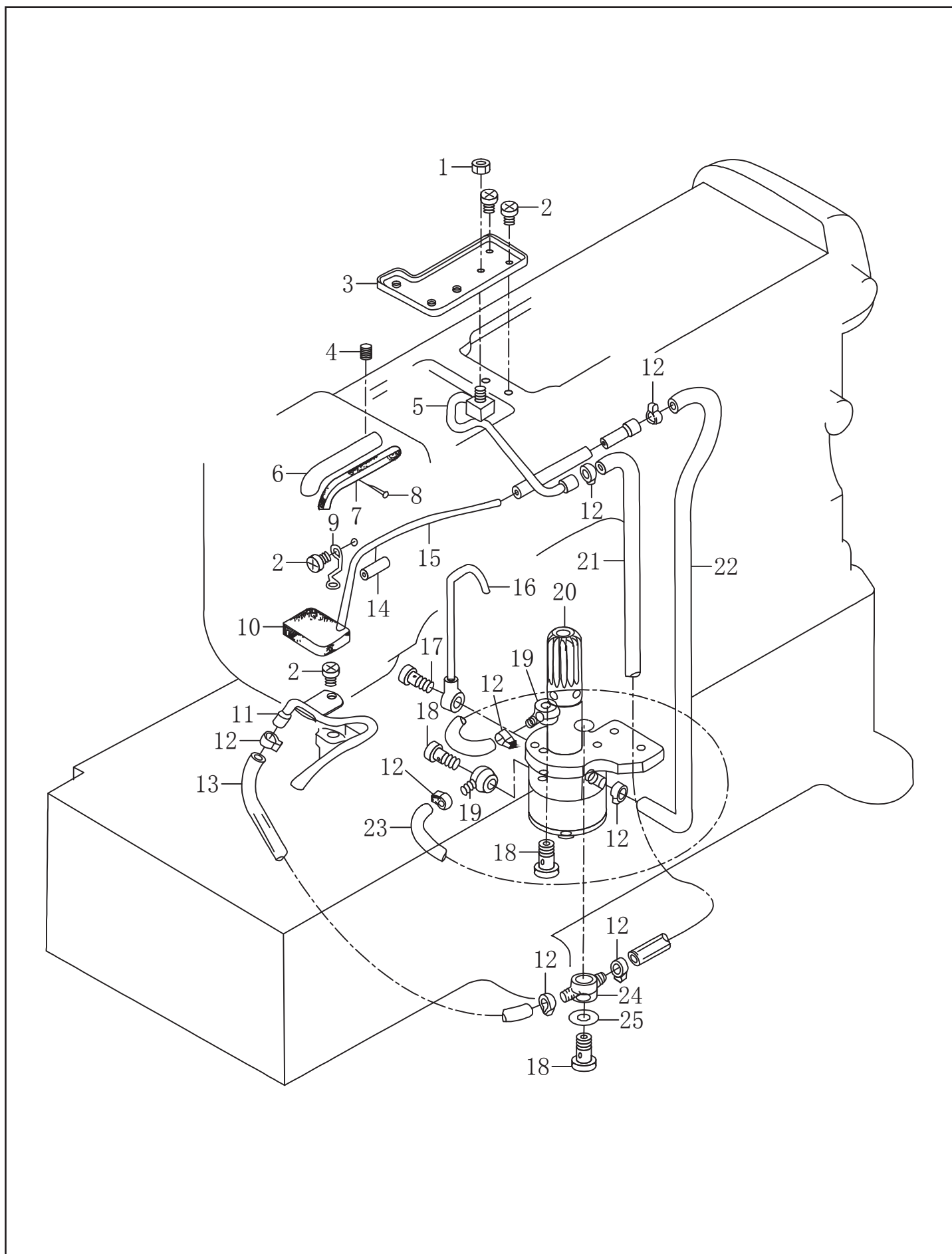
15. 下过线部分/Lower Thread Tension Components



15. 下过线部分/Lower Thread Tension Components

序号	图号	数量	名称	NAME OF PARTS
1	150094901	1	螺钉M4×8	SCREW PAN M4×8
2	150150201	1	下过线器组件	WIRE FEEDER ASSY
3	150150301	1	打线凸轮	CAM
4	014500632	6	螺钉M5×6	SCREW PAN M5×6
5	012061032	4	螺钉M6×10	SCREW PAN M6×10
6	150150601	1	挡圈	SHAFT SLEEVE
7	150150701	1	轴承6801Z	BEARING 6801Z
8	150150801	1	衬套	SHAFT SLEEVE
9	150150901	1	衬套	SHAFT SLEEVE
10	150151001	1	下过线连接轴	AXIS
11	150151101	2	轴承60001RS	BEARING 60001RS
12	150151201	2	卡簧	BEAD FLANGE
13	150151301	1	下过线从动时轮	PULLEY
14	150151401	1	同步带（小）	BELT
15	048120342	1	E型卡簧 E12	BEAD FLANGE E12
16	150151601	1	橡胶塞28×4.2	RUBBER 28×4.2

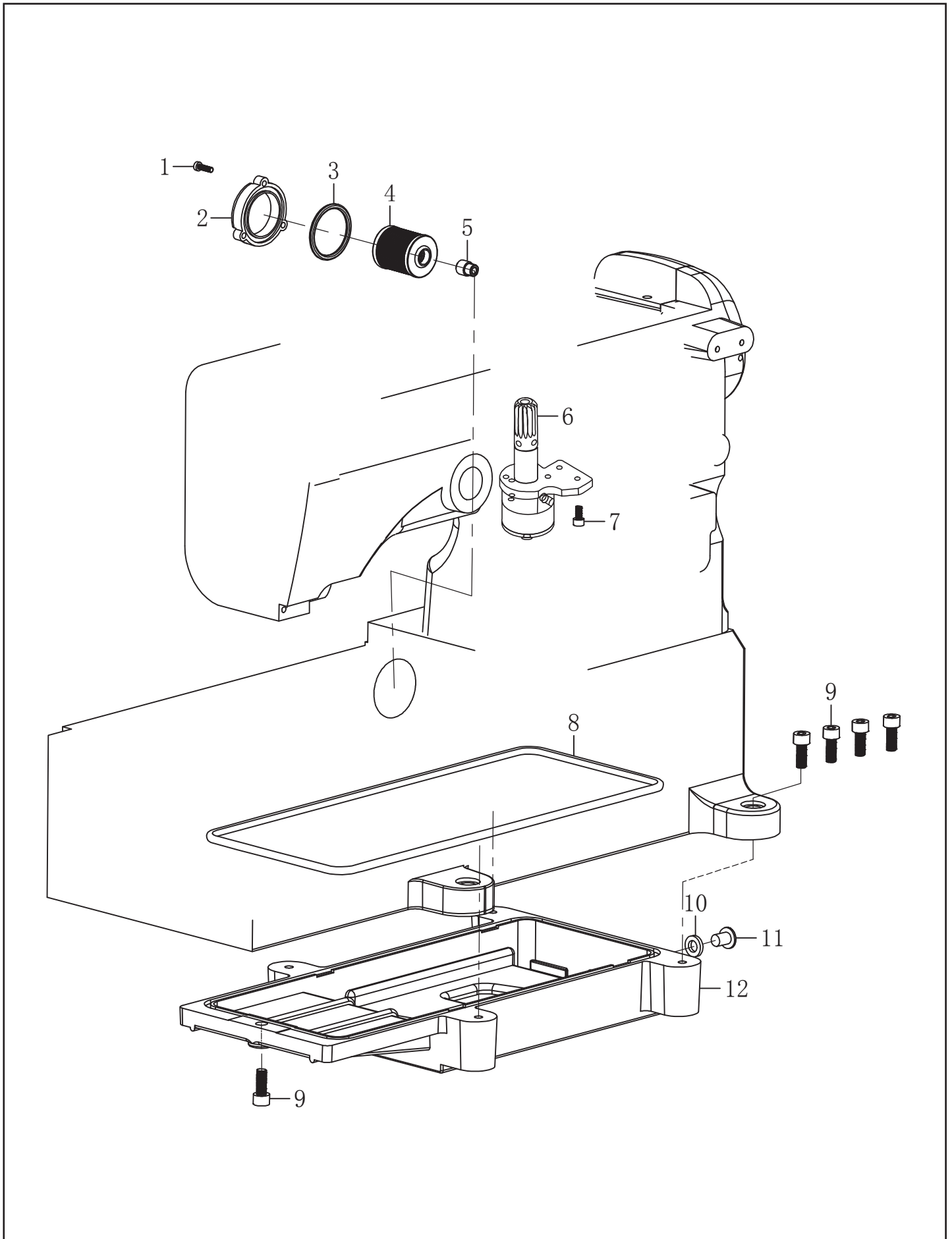
16.供油部分/Lubrication Mechanism Components



16. 供油部分/Lubrication Mechanism Components

序号	图号	数量	名称	NAME OF PARTS
1	021300306	1	螺母 M3	NUT M3
2	150010101	4	螺钉M4×7	SCREW PAN M4×7
3	150160301	1	上油盘	OIL GUARD
4	014500832	1	螺钉M5×8	SCREW PAN M5×8
5	150160501	1	上轴供油管	OIL DISTRIBUTOR
6	150160601	1	针杆曲柄过线管	OIL PIPE
7	150160701	1	针杆曲柄供油毡	FELT
8	150160801	1	油线钉	PIN
9	150160901	1	毛毡定位勾	LATCH
10	150161001	1	回油毡	FELT
11	150161101	1	下油管组件	OIL DISTRIBUTOR
12	150161201	8	进油短油管夹	CLAMP
13	150161301	1	回油管	PIPE
14	150161401	1	回油管	PIPE
15	150161501	1	回油铜管	PIPE
16	150161601	1	涡轮供油管组件	PIPE
17	150161701	1	螺钉小双通油接头	JOINT SCREW
18	150161801	3	螺钉双通油管接头	JOINT SCREW
19	150161901	2	单通油管接头	JOINT
20	150162001	1	油泵组件	OIL PUMP ASSY
21	150162101	1	回油管	PIPE
22	150162201	1	回油管	PIPE
23	150162301	1	回油管	PIPE
24	150162401	1	双通管接头	JOINT
25	150162501	8	红纸垫	SHIN

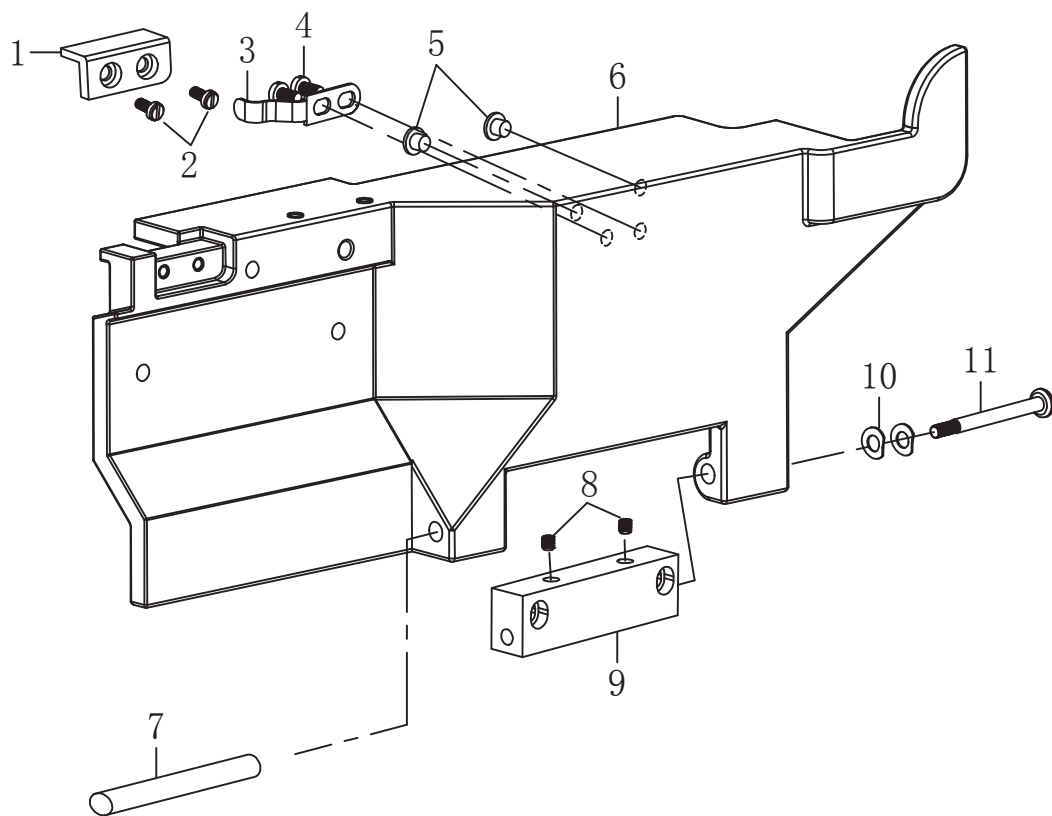
17. 油泵部分/Pump Components



17. 油泵部分/Pupm Components

序号	图号	数量	名称	NAME OF PARTS
1	150170101	3	螺钉	SCREW
2	150170201	1	滤油器盖	PUPM FILTER COVER
3	150170301	1	O型圈	O-RING
4	150170401	1	滤油器	PUPM FILTER
5	150170501	1	滤油器螺钉	PUPM FILTER SCREW
6	150162001	1	油泵组件	OIL PUMP ASSY
7	018502032	2	螺钉M5×20	SCREW PAN M5×20
8	150170801	1	油盘防油垫	OIL PROTECTING GASKET
9	018082532	5	螺钉M8×25	SCREW PAN M8×25
10	150171001	1	密封垫	OIL PROTECTING GASKET
11	150171101	1	油盘螺钉	SCREW PAN
12	150171201	1	油盘	OIL PAN

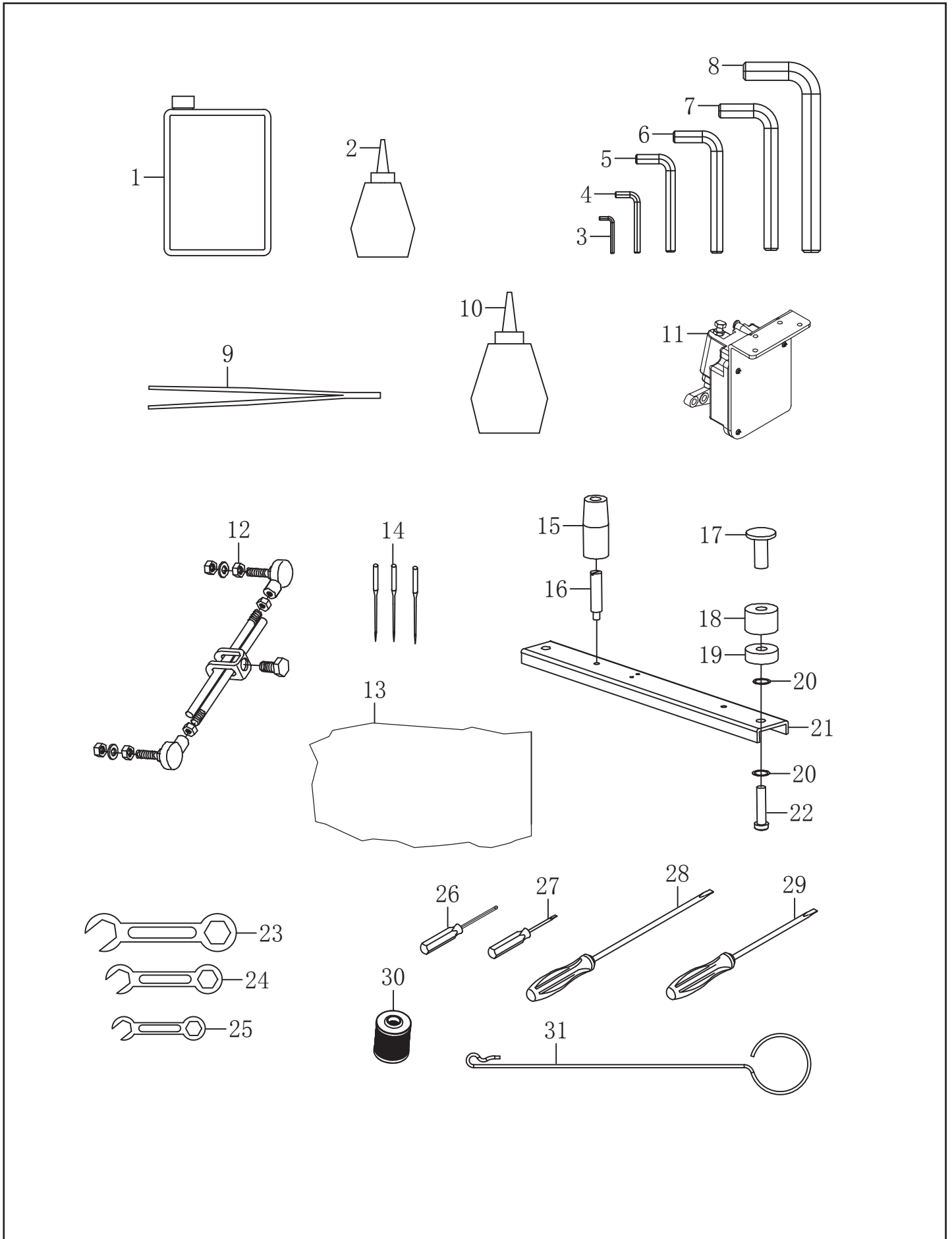
18.导布部分/The Attachment



18. 导布部件/The Attachent

序号	图号	数量	名称	NAME OF PARTS
1	150180101	1	右盖嵌片	LNSETS
2	062300516	2	螺钉M3×5	SCREW PAN M3×5
3	150180301	1	穿线罩弹簧	THREADING COVER SPRING
4	150180401	2	穿线罩弹簧螺钉	SCREW PAN
5	150180501	2	防震塞	SHOCKPROOF PLUG
6	150022701	1	穿线罩板	THREAD GUIDE PLATE
7	150180701	1	轴	THREADING COVER PIN
8	014500832	2	螺钉M5×8	SCREW PAN M5×8
9	150180901	1	穿线链	HINGE THREAD GUIDE LATHE
10	150181001	2	波形垫圈	WAVE WASHER
11	150022801	1	长螺钉	LONG SCREW

19.附件部分一/Accessories



19.附件部分一/Accessories

序号	图号	数量	名称	NAME OF PARTS
1	188222401	1	油壶 (大)	OIL CONTAINER
2	188240801	1	油壶 (小)	OIL CONTAINER
3	5030229	1	内六角扳手 2mm	HEXAGONAL WRENCH 2mm
4	5030228	1	内六角扳手 2.5mm	HEXAGONAL WRENCH 2.5mm
5	5030240	1	内六角扳手 3mm	HEXAGONAL WRENCH 3mm
6	5030239	1	内六角扳手 4mm	HEXAGONAL WRENCH 4mm
7	5030241	1	内六角扳手 5mm	HEXAGONAL WRENCH 5mm
8	188241501	1	内六角扳手 6mm	HEXAGONAL WRENCH 6mm
9	150190901	1	镊子	TWEEZERS
10	188240901	1	硅油壶	OIL CONTAINER
11	115152001	1	控速器	SPEED CONTROLLER
12	115151901	1	连杆	SPEED CONTROLLER PILL ROD
13	150191301	1	W562大尼龙袋	PLASTIC MACHINE BAG
14	150191401	4枚	机针	NEEDLE
15	150191501	4	胶垫	CUSHION RUBBER
16	150191601	4	脚垫螺钉	SCREW
17	150191701	4	托盘固定螺母	NUT
18	150191801	4	胶垫	CUSHION RUBBER
19	150191901	4	塑料脚垫	SPACE RING
20	150192001	8	垫片	WASHER
21	150192101	2	承重板	BEARING PLATE
22	018085032	4	螺钉M8×50	SCREW PAN M8×50
23	5030211	1	双头扳手 8	DOUBLE HEADED HAND WRENCH
24	5030210	1	双头扳手 7	DOUBLE HEADED HAND WRENCH
25	5030209	1	双头扳手 6	DOUBLE HEADED HAND WRENCH
26	188240601	1	内六角扳手 1.5mm	HEXAGONAL WRENCH 1.5mm
27	115151601	1	一字螺丝刀 (小)	SCREW DRIVER S
28	115151701	1	一字螺丝刀 (中)	SCREW DRIVER M
29	115151801	1	一字螺丝刀 (大)	SCREW DRIVER B
30	150170401	1	滤油器	PUPM FILTER
31	150192301	1	线勾	NEEDLE THREADER

