

DUMA



浙江杜马缝纫机股份有限公司
ZHEJIANG DUMA SEWING MACHINE CO., LTD.

地址：浙江省台州市椒江区机场南路58号
电话：0576-89086969 传真：0576-89086999
网址：www.cnduma.com



430

电子打结机

Electronic bar tacking machine

刚性较高机架,低噪音低振动。
The rigid frame, low noise, low vibration.

采用电机**步进三驱**设计,一个电机带动整机剪线、抬压脚和扫线功能,剪线声音更轻,性能更加稳定,更加耐用!

Adopt 3 Direct stepping motor design, the machine using one motor to drives thread trimming, lift the presser foot and thread sweeping function, the sound of thread trimming is more soft,the performance is more stable and more durable!

430
电子打结机

Electronic bar tacking machine



430

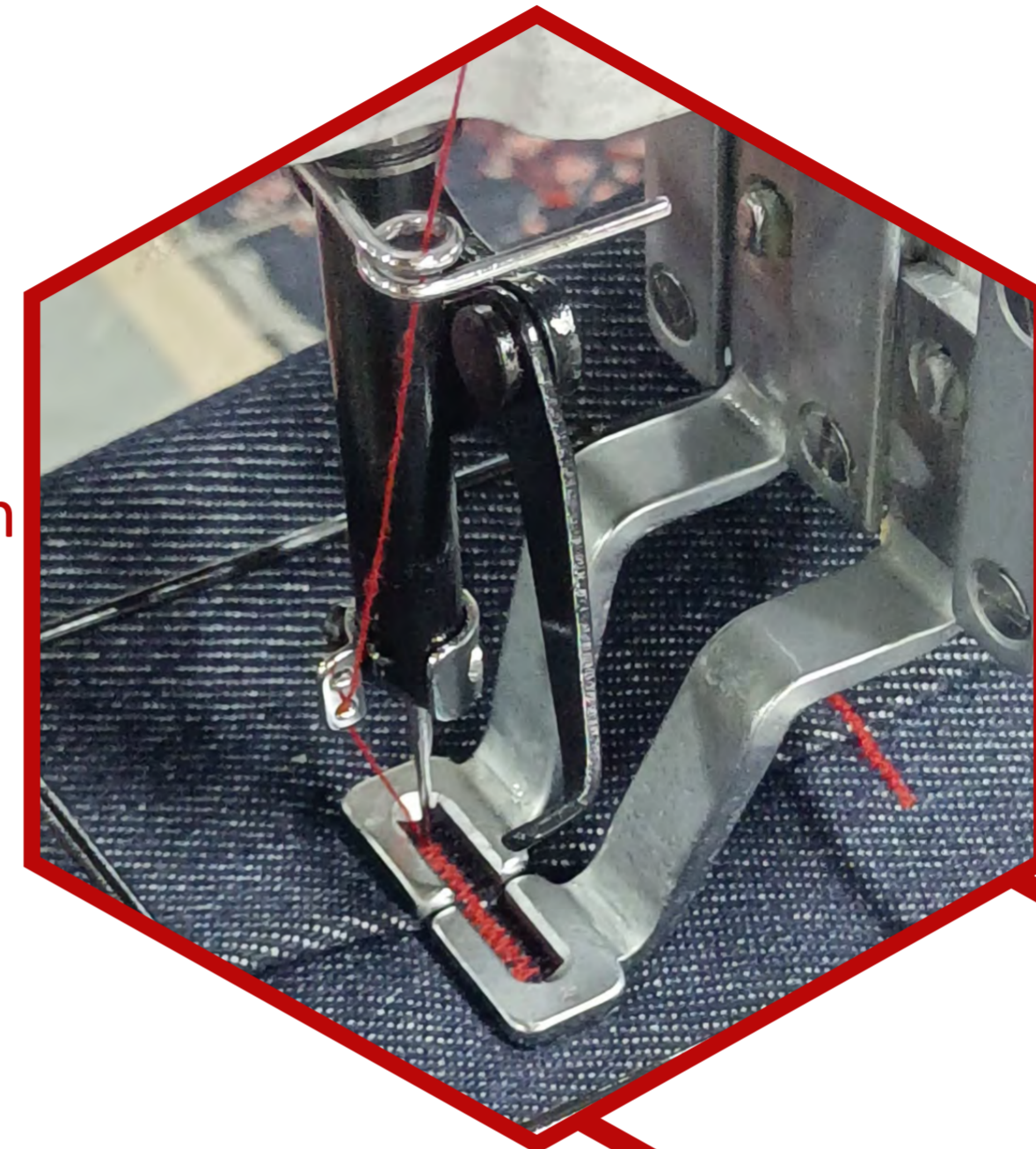


430基本性能

01

最高缝制速度可达3200sti/min,提高了起缝. 停止.切线和自动压脚提升速度,生产效率提高, 电控反应及响应速度更加灵敏.

The maximum sewing speed can reach 3200sti/min, which improves the speed of seam start, stop, tangent and auto Press foot.improve production efficiency, electronic control response , response speed is more sensitive.

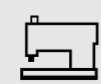
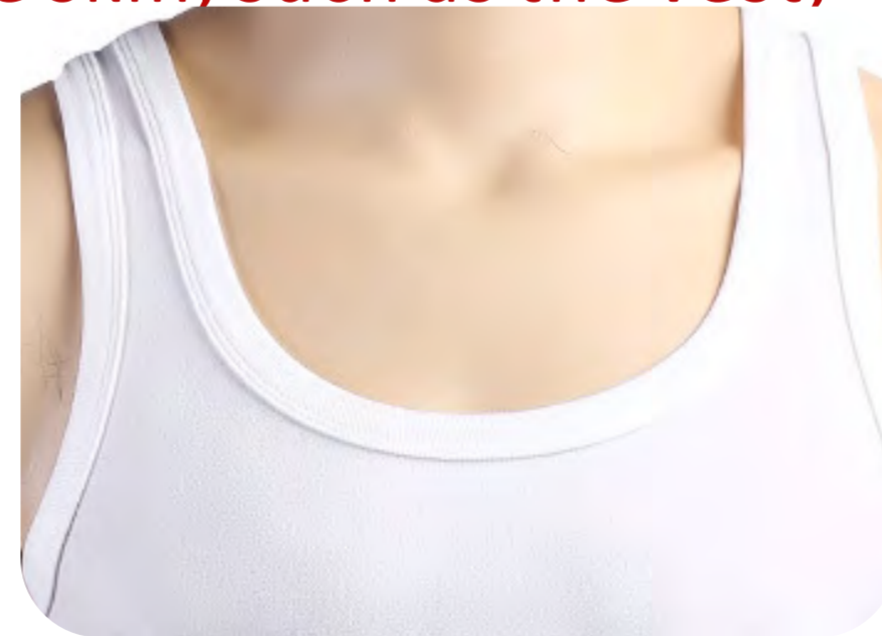


02

面料不脱线缩短切线后的针线余成,有效防止鸟巢状线迹,无需手工剪线头,文胸.背心等直接接触皮肤的套结部分手感柔软舒适.

The fabric does not break the thread to shorten the needle and thread after the tangent, effectively prevent the bird's nest stitch, no need to manually cut the thread, bra.

The knotting part that directly touches the skin, such as the vest, feels soft and comfortable.



DM 430



1



17



★



★



★



★



★



★



3200



780x360x550



52/45

可用于男装/女装、牛仔布、针织物、 女式内衣的各种不同用途.

Mens / Womens can be used, denim, knitted fabric, women's underwear in a variety of different uses.



吃厚能力强, 能轻松实现**箱包**和**渔网** 等高强度缝制品的加固缝纫.

Strong ability to eat thick, can easily realize the reinforcement sewing of high strength sewing products such as bags and fishing nets.

