

DUMA



浙江杜马缝纫机股份有限公司

ZHEJIANG DUMA SEWING MACHINE CO., LTD.

地址：浙江省台州市椒江区机场南路58号

电话：0576-89086969 传真：0576-89086999

网址：www.cnduma.com



DM-1903A

双步进上下送料厚料平缝机

Two step motor bottom and top-feed lockstitch machine



- 1. 按键屏操作面板
操作盒按键，内容直观，操作简便迅速。
Button operation panel, easy and fast working.



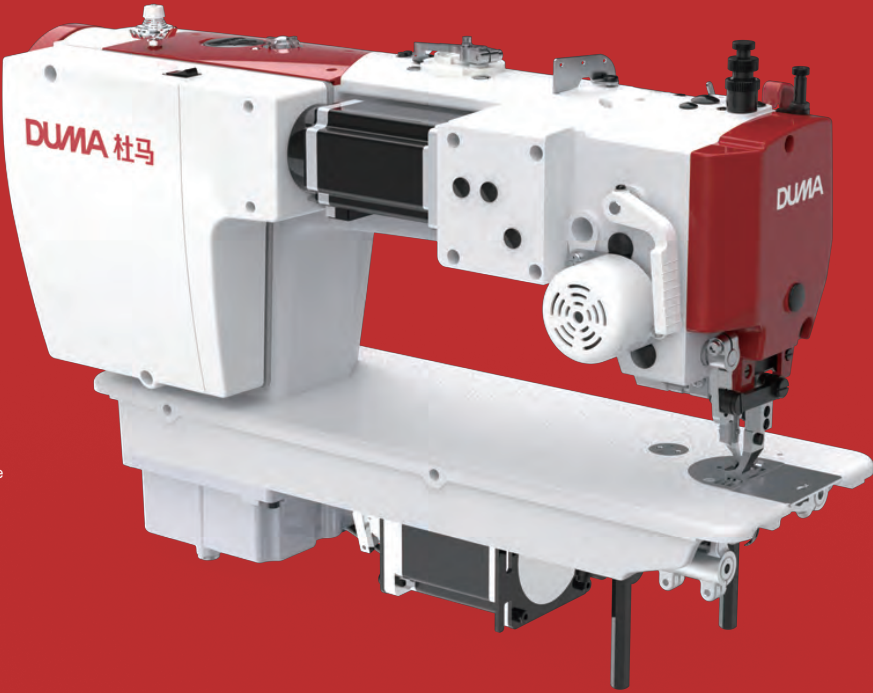
- 3. 四个按键
配有四个补针键，方便进行加固、补针（补1针，补1/2针，1/4针）倒缝操作。
With four led button, it is convenient to reinforce and bartacking.



- 2. 通轴传动
采用750W主轴电机驱动，机针贯穿能力强，更适合厚料的缝纫。
Driven by a 750W spindle motor, the needle has strong penetrating ability and is more suitable for sewing thick materials.



- 4. 超大空间
操作空间大，长320mm。
Large operating space, 320mm long.



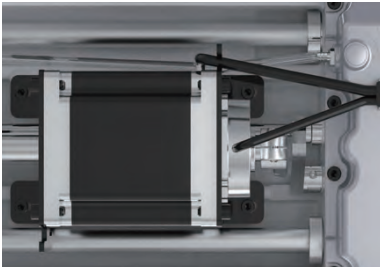
- ◆封闭式摆动轴: 封闭式摆动轴设计，防止零件生锈，增加零件的使用寿命



Closed swing shaft:
The closed swing shaft design prevents the parts from rusting and increases the service life of the parts.

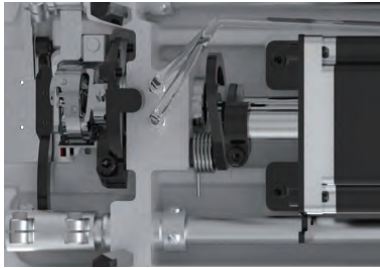
- ◆压脚扳手 新型压脚扳手设计，手动抬压脚更方便、省力

Foot wrench :
New design of presser foot wrench, manual presser foot lifting is more convenient and labor-saving.



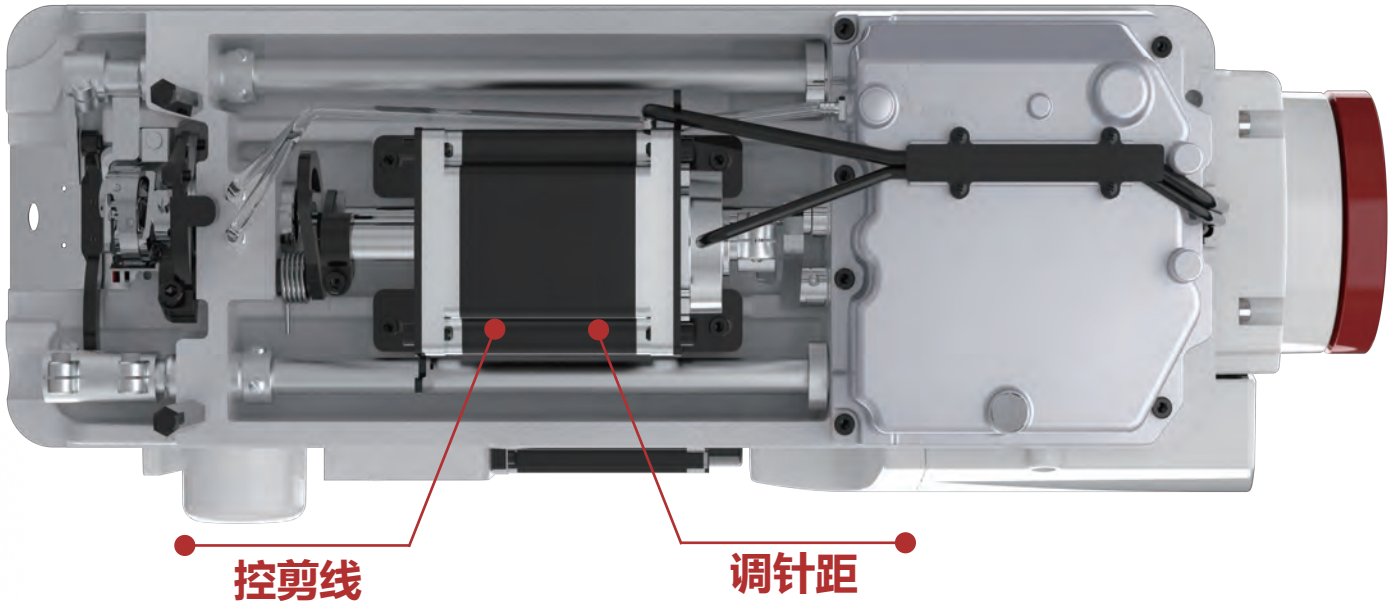
- ◆步进电机调针距:
针距准确，设定值即实际值；线迹重合精准，加固线迹漂亮，能进行装饰线迹的缝纫，倒缝声音轻。

Stepping motor adjust stitch distance :
The stitch length is accurate, and the set value is the actual value; the stitches overlap accurately, the reinforcement stitches are beautiful, and the decorative stitches can be sewn, and the back stitching sound is light.



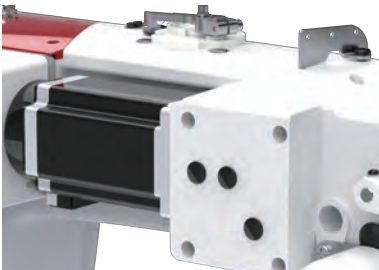
- ◆步进电机控制剪线机构：剪线稳定声音轻
Stepping motor drive thread trimming mechanism:

Stable thread trimming, light sound.



- ◆步进电机控制抬压脚：压脚提升和下降时声音轻柔，压脚高度可调

Stepper motor control to lift the presser foot:
When the presser foot is raised and lowered, the sound is soft, and the height of the presser foot is adjustable



- ◆步进电机控制内外压脚交替量：步进电机控制压脚交替量调节，可以一键实现压脚交替量的调节，轻松实现由薄到厚的缝纫。

Stepping motor controls the alternating amount of inner and outer presser foot:
The stepping motor controls the adjustment of the alternate amount of the presser foot, easy sewing from thin to thick

- ◆低噪音:
优化的机壳设计和主轴马达结构，机器运转时噪音低；采用步进马达控制加固缝，加固时无声响；采用步进马达控制抬压脚，压脚提升和下降时声音轻柔；采用步进马达驱动切线，切线声音大幅降低；

Low noise:
a. Optimized design of modle body, b. motor without bearing,
c. Step motor control reverse sewing with light noise. d. Step motor control press foot lifter,
e. Step motor control trimmer, light noise for trimmer.

- ◆密封式油盒
采用全密封润滑设计，可防止润滑油被线毛污染，机器的耐用性更好；减少了损耗

Sealed oil box:
Fully sealed lubrication design can prevent the lubricating oil from being contaminated by thread wool, and the durability of the machine is better; the loss is reduced.

